

# SEISMIC CALIBRATION LOG

(Adjusted Continuous Velocity Log)

Company: BEACH PETROLEUM N.L. From W.C.R.

Well: NAJABA - 1A

Field: WILDCAT

Country: AUSTRALIA

Reference No: 560706 / 560707 Interval: 000 to 3412.00

Date Logged: 24/08/88 Date Processed: 10/07/88

Location: 037° 54' 13" S 141° 03' 50" E

Elevations: KB: 57.7 M DE: 57.4 M GL: 51.7 M

Permanent Datum: MSL Depth Units: METRES

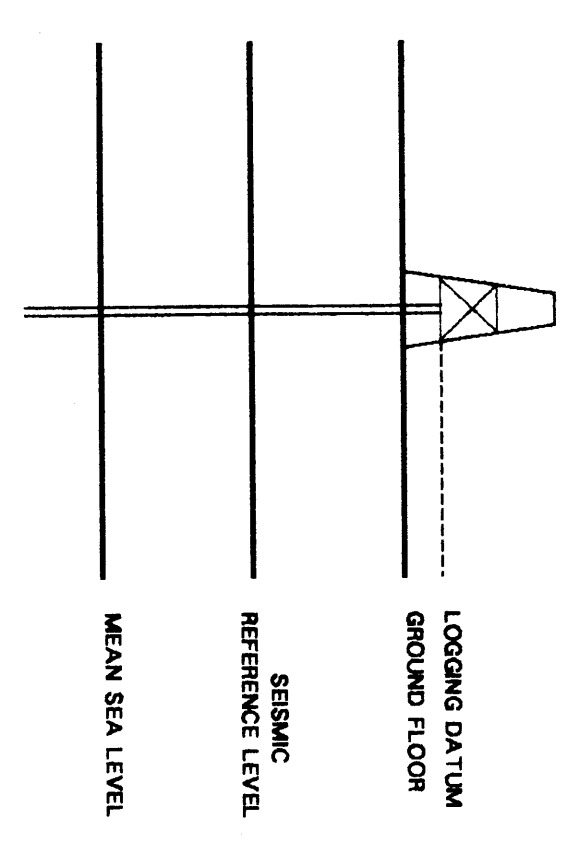
FIELD RECORDING: Engineer: A.JAMES/JAMAL/Location: OGA Program Version: 282A

COMPUTATION: Analyst: M.SANDERS Centre: SVJ Basecamp: 142

Logging Datum: ELEVATION ABOVE MEAN SEA LEVEL 57.7 M

Seismic Reference Datum: MSL

Ground Floor: 51.7 M



Total Number of GSD Levels: 44 (from 770 to 3412 M below KB)

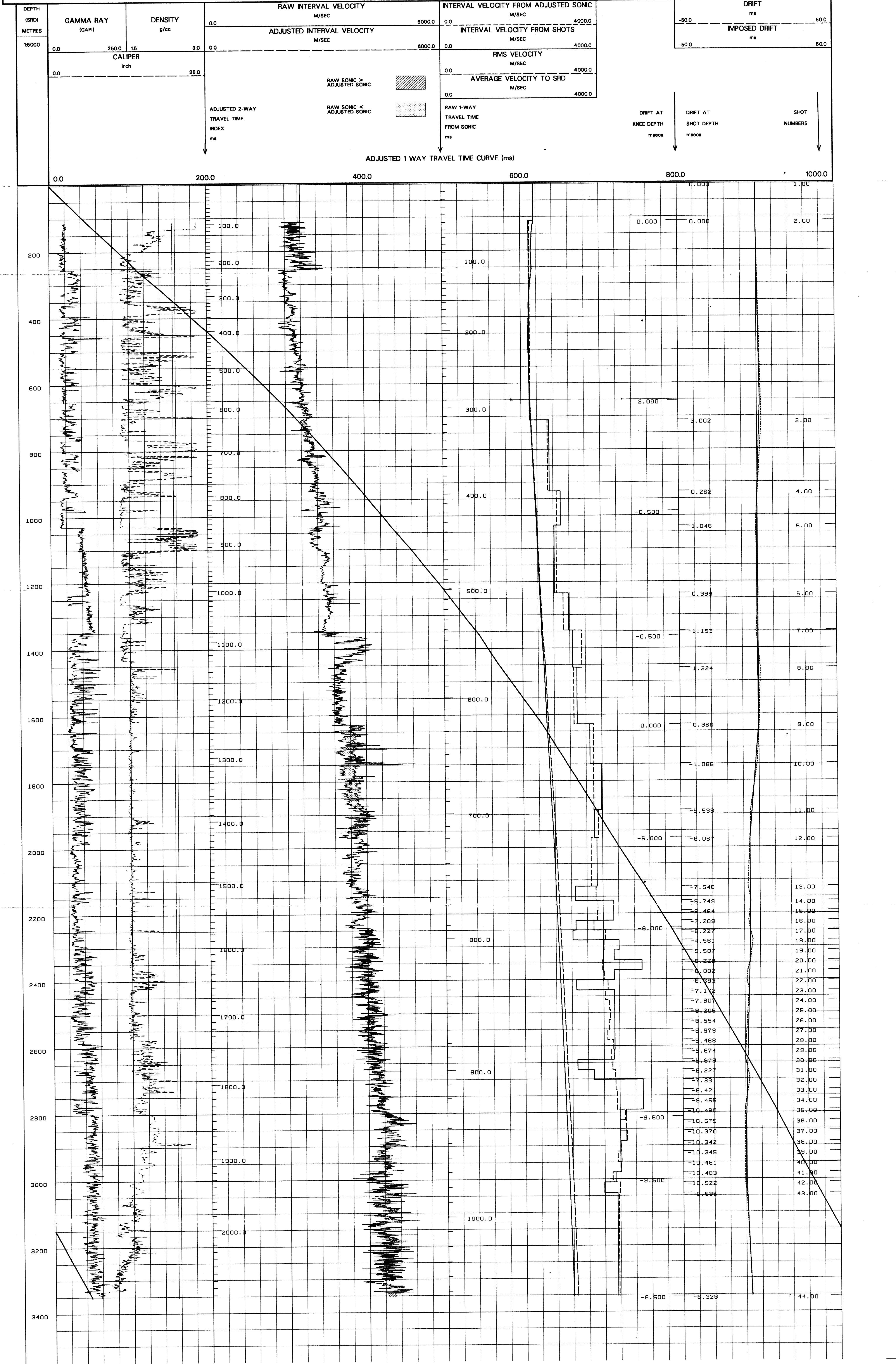
Time Reference	SRD		SRD	
	Top Depth	Bottom Depth	Top Depth	Bottom Depth
1	04/08/88	SL5	12 1/4" @ 198 M	20" @ 198 M
2	28/08/88	SL5	8 1/2" @ 3412 M	15 3/8" @ 1468 M

SRD	Tool Type	SRD	SRD	SRD
1	24/08/88	AV 132 M	19.4 M	2.0 M below GL
				0.0 M below GL

The well name, location and borehole data were furnished by the customer.

All interpretations are opinions based on inferences from electrical or other measurements and we cannot, and do not guarantee the accuracy or correctness of any interpretations, and we shall not, except in the case of gross or willful negligence on our part, be liable or responsible for any loss, costs, damages or expenses incurred or sustained by anyone resulting from any interpretations made by any of our officers, agents or employees. These interpretations are also subject to Clause 4 of our General Terms and Conditions as set out in our current Price Schedule.



JL

COMPANY BEACH PETROLEUM N.L.  
 FIELD WILDCAT  
 WELL NAJABA - 1A  
 COUNTRY AUSTRALIA

