



Plate 1: 626.0 metres Reflected Light
 This coal consists largely of vitrinite (grey) with moderate quantities of exinite (brown) and inertinite (white).
 Field dimensions 0.26 x 0.18 mm

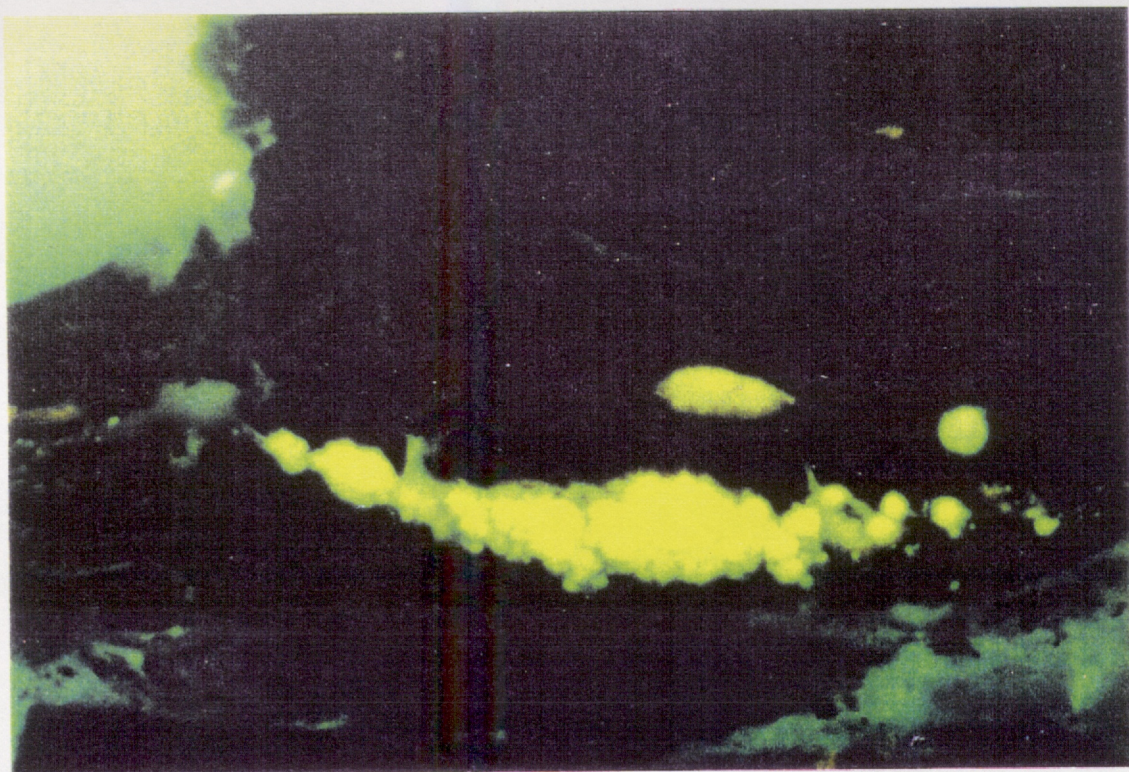


Plate 2: Same field as above Fluorescence Mode
 Primary oil (intense yellow - intense green) fluorescence is associated with resinite in this coal.