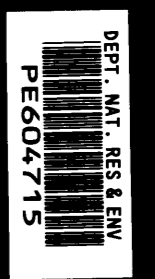
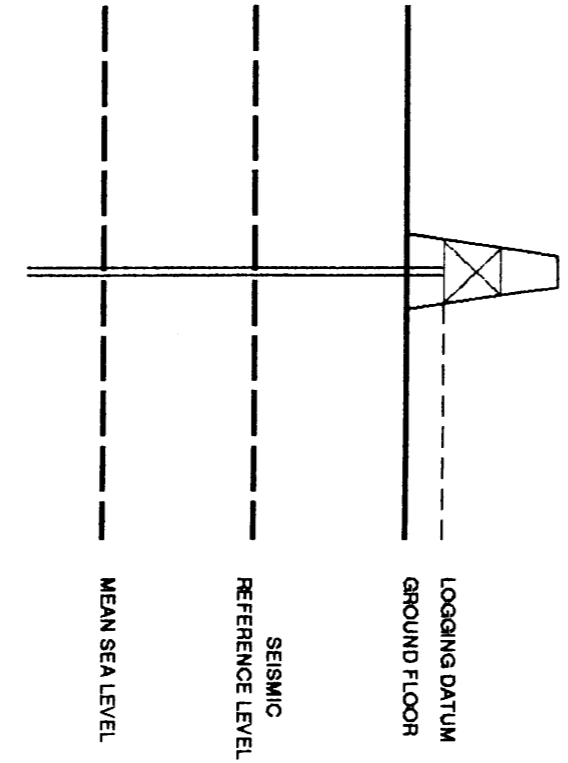


SEISMIC CALIBRATION LOG

(Adjusted Continuous Velocity Log)



Company: GFE RESOURCES LTD.
 Well: LANGLEY #1
 Field: EXPLORATION
 Country: AUSTRALIA
 Reference No: SY1-561022 Interval: 2008.00 to 350.00
 Date Logged: 03-JUN-1994 Date Processed: 15-JUN-1994
 Location: 038 39' 51.089" S 142 56' 10.625" E
 Elevations: KB: 69.70 DF: 69.30 GL: 64.00
 Permanent Datum: MSL Depth Units: METRES
 FIELD RECEIVING: Engineer: WATSON/STATION Location: GFA Program Version: CR 42.2
 CONTRIBUTION: Analyst: AMBIBONO Charts: SVJ Baseline: E 5
 Logging Datum: 69.70
 Seismic Reference Datum: 0.00
 ELEVATION ABOVE MEAN SEA LEVEL

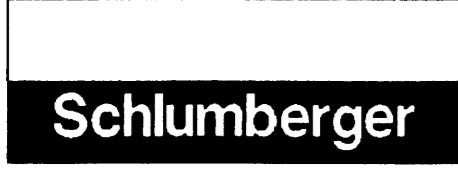
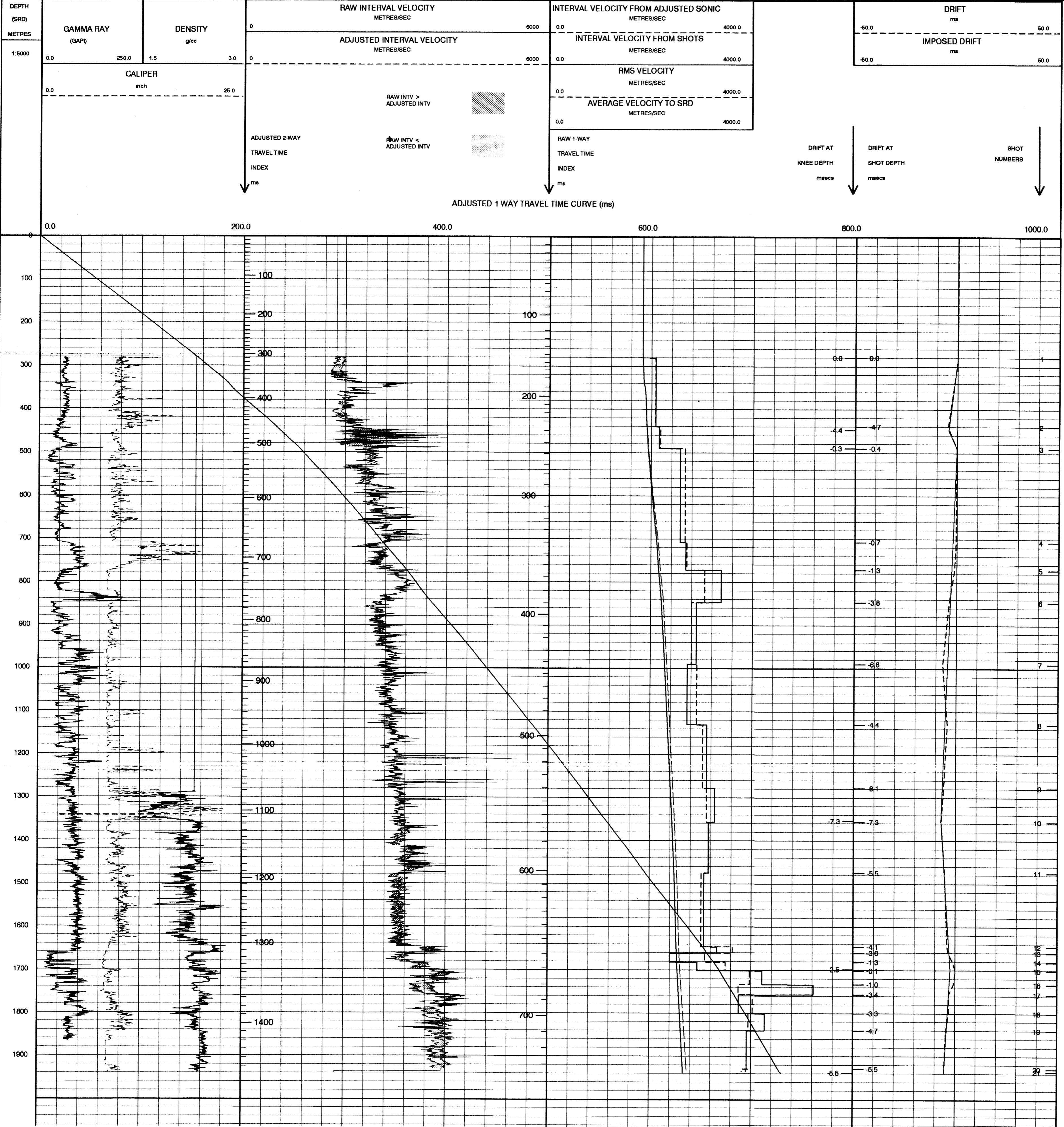


Total Number of Levels: 20
 Depth Reference: SRD
 Time Reference: SRD

Run	Date	Tool Type	SR Size Depth	Casing Size Depth	Top Depth	Bottom Depth
1	03-06-94	DLL-AS	8.8 IN		0 M	2002 M
2	03-06-94	DL-CNTL	8.8 IN		1360 M	2008 M
SRD	04-06-94	22 M		2 M BELOW DL		125.5 DRG

FOLD HERE The well name, location and borehole reference data were furnished by the customer.

All interpretations are opinions based on inferences from electrical or other measurements and we cannot, and do not guarantee the accuracy or correctness of any interpretations, and we shall not, except in the case of gross or willful negligence on our part, be liable or responsible for any loss, costs, damages or expenses incurred or sustained by anyone resulting from any interpretations made by any of our officers, agents or employees. These interpretations are also subject to Clause 4 of our General Terms and Conditions as set out in our current Price Schedule.



COMPANY GFE RESOURCES LTD.
 FIELD EXPLORATION
 WELL LANGLEY #1
 COUNTRY AUSTRALIA