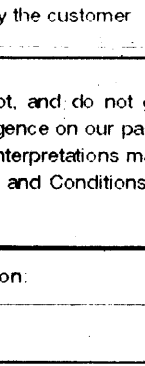


Enclosure 10b  
**Schlumberger**  
 STRATIGRAPHIC  
 DIPMETER  
 COMPUTATION

**MEAN  
 SQUARE  
 DIP**



A Mark of Schlumberger

Using the following logs:

SHDT-GR SCALE 1:500  
 Company: GAS & FUEL EXPLORATION  
 Well: LANGLEY-1  
 Field: WILDCAT  
 Country: AUSTRALIA

Reference No: SYJ-169879 Interval: 2003.0001 to 1430.00  
 Date Logged: 05-JUN-1994 Date Processed: 16-JUN-1994

Location: LAT: 038 55 51.089 S LON: 142 56 10.625 E  
 Elevations: KB: 69.7 M DF: 69.3 M GL: 64.0 M

Permanent Datum: MSL Depth Units: METRES

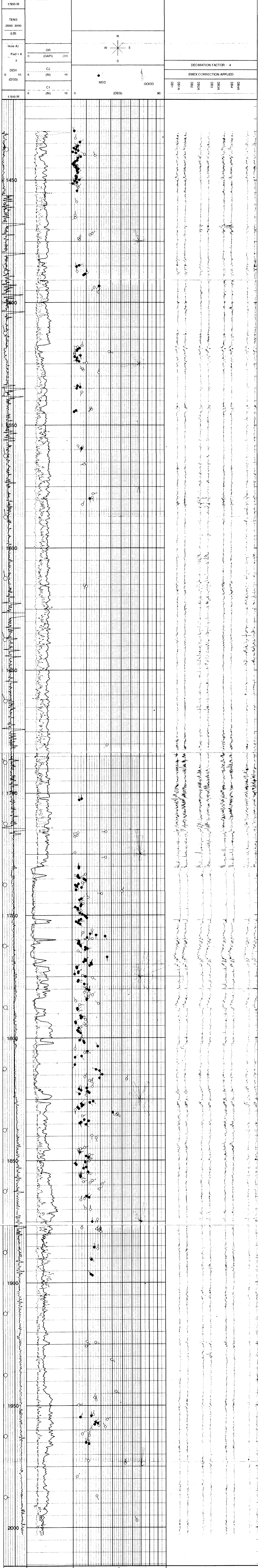
The well name, location and borehole reference data were furnished by the customer

All interpretations are opinions based on inferences from electrical or other measurements and we cannot, and do not guarantee the accuracy or correctness of any interpretations, and we shall not, except in the case of gross or willful negligence on our part, be liable or responsible for any loss, costs, damages or expenses incurred or sustained by anyone resulting from any interpretations made by any of our officers, agents or employees. These interpretations are also subject to Clause 4 of our General Terms and Conditions as set out in our current Price Schedule.

FIELD RECORDING	Engineer	M WILSON B TEXTOR	Location	DNA	Program Version	40.2
COMPUTATION	Analyst	A WILLIAMS	Centre	SYJ	Baseline	20.4X5

MUD MEASUREMENTS	R <sub>L</sub>	0.426 @ 22.0°C	R <sub>r</sub>	0.347 @ 14.0°C	BHT	74.4°C	Bit Size	8.5in
------------------	----------------	----------------	----------------	----------------	-----	--------	----------	-------

Remarks:  
 Magnetic Declination is 10 000' East  
 Processing parameters: 1M X 0.5M - 35 X 2  
 Black arrows represent dips with quality of 18 to 20  
 White arrows represent dips with quality of 15 to 17



DECIMATION FACTOR	4
EMEX CORRECTION APPLIED	
DB1	DB1A
DB2	DB2A
DB3	DB3A
DB4	DB4A
DB5	DB5A

DECIMATION FACTOR	4
EMEX CORRECTION APPLIED	
DB1	DB1A
DB2	DB2A
DB3	DB3A
DB4	DB4A
DB5	DB5A