

BE90222

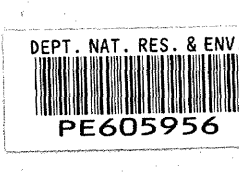
COMPOSITE WELL LOG
BORE LOGGING OPERATION — LATROBE No.1 WATER BORE
DEPARTMENT OF MINES OF VICTORIA

PETROLEUM TENEMENT, P.E.P. 6 LOGGED FOR FROME BROKEN HILL CO. PTY. LTD.
STATE: VICTORIA 4 MILE SHEET: COLAC BASIN: OTWAY WELL STATUS: ABANDONED

LOCATION — Latitude 38° 41' 35" S Longitude 143° 09' 00" E
ELEVATION — R.T.: 102 Feet Above Sea Level
DATE SPUNDED: 6-6-63
DATE DRILLING STOPPED: 14-2-64 Rig stopped drilling 19-7-63 and moved to another site. Resumed drilling on 29-8-63
DATE RIG OFF: 24-2-64
TOTAL DEPTH: 2054'
Driller: 2034'
E. Log: 2027' — Depth Reached
HOLE SIZE: In. From To
7 1/2 160' 600'
5 1/2 600' 2026'
4 1/2 2026' 2054'
CASING: In. Wt. Gr. Depth Cmt. Cmt'd to.
8" O.D. 24-1/8 lb/ft. 160' 0' Stewart and Lloyd. Swell joint water well casing.
CEMENT PLUGS: From To Sacks: 0
N.I.L.
DRILLED BY: DEPARTMENT OF MINES OF VICTORIA
DRILLING METHOD: Rotary. Falling 1500'

ELECTRIC LOG DATA

DATE	17-12-63
FOOTAGE LOGGED	1866
LOGGED FROM	2026'
LOGGED TO	160'
TOTAL DEPTH - ELECTRIC LOG	2027'
TOTAL DEPTH - DRILLER	2053' 9"
CASING SHOE - ELECTRIC LOG	160'
CASING SHOE - DRILLER	159'
BIT SIZE	5 1/2" to 2026' (4 1/2" to 2054')
MUD - KIND	NATURAL
TREATMENT	
WATER LOSS cc/30 min	
WEIGHT lbs/cu. ft.	10
VISCOSITY (Marsh) Sec.	32
pH	
RESISTIVITY m ² /m AND TEMP. 70°F	12-3
MAX. RECORDED TEMPERATURE	
ELECTRODE SPACING	
SYMMETRICAL	
NON-SYMMETRICAL	
RECORDED BY	J. WHITE



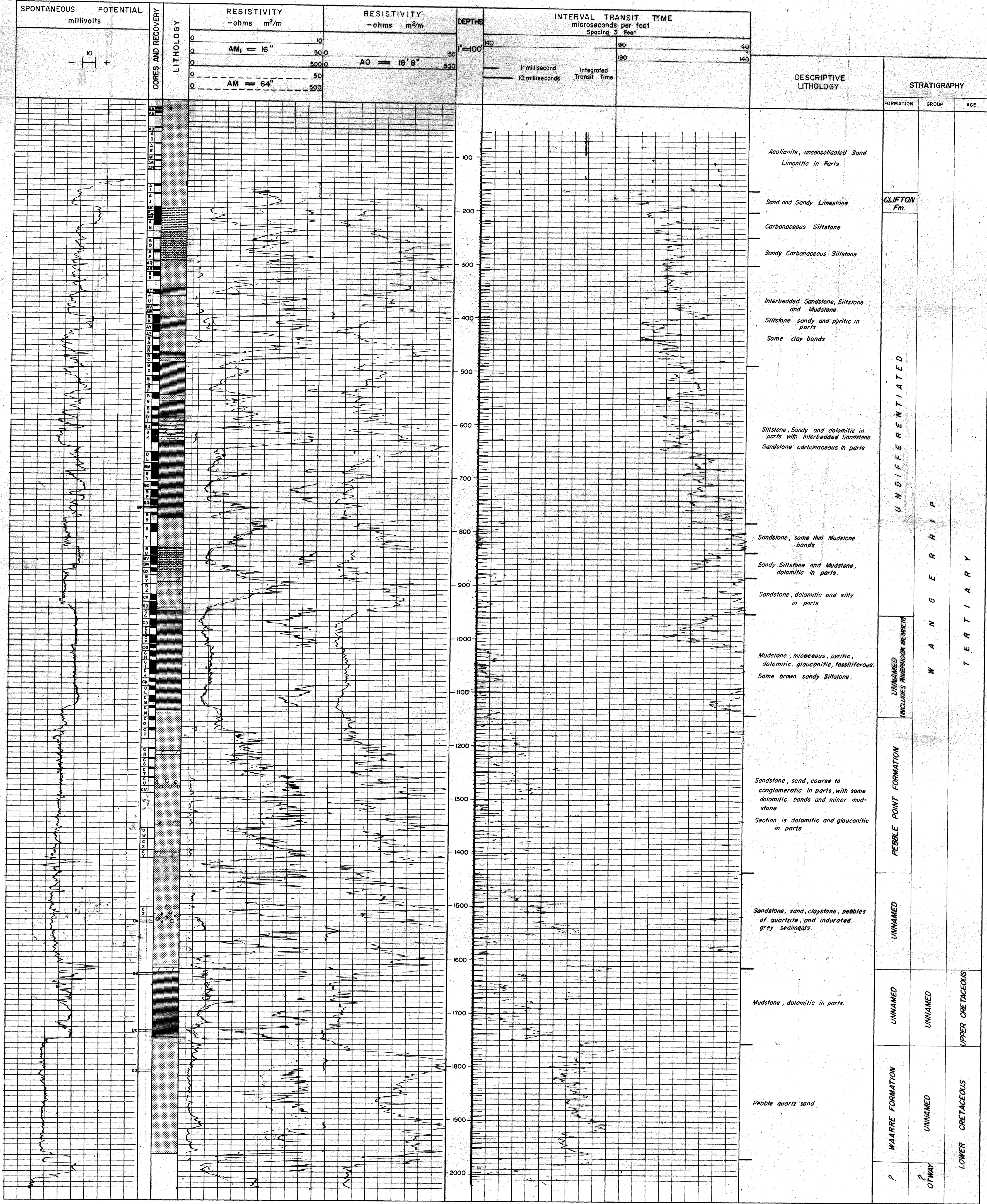
SONIC LOG DATA

DATE	17-12-63
FOOTAGE LOGGED	1866
LOGGED FROM	2026'
LOGGED TO	160'
DEPTH REACHED	2024'
RECORDED BY	J. WHITE

WELL SYMBOLS
Core, Interval, Number and recovery.

LITHOLOGIC REFERENCE

	Conglomerate
	Quartz sandstone
	Siltstone
	Mudstone
	Dolomite
	Sandy siltstone



T.D. 2054 ft.

BE90222