

COMPOSITE WELL LOG

IONA - 5



Enclosure 2
Well Composite Log by PetroVal
Australasia Pty Ltd

PERMIT: PPL-2

BASIN: OTWAY

STATE: VICTORIA

SURFACE COORDINATES:
 AMG X 677279.4
 Y 5728374.1

SPUDED: 0:00 hrs on 22 April 1999

BOTTOM HOLE COORDINATES
 AMG X 676863.8
 Y 5728374.1

REACHED TD: 10:40 hrs on 1 May 1999

RIG RELEASED: 24:00 hrs on 21 May 1999

DRILLING CONTRACTOR: OD & E Rig 30

ELEVATION: GL 129.98 AHD
 KB 134.98 AHD

Hole Sizes (inches)	From (m)	To (m)
24"	Surface	10.0
17 1/2"	10.0	656.0
12 1/2"	656.0	1720.0

TOTAL DEPTH: DRILLER 1720.0
 LOGGER 1722.0

Casing Size	Shoe (m)	Grade	Weight (lb/ft)
Surface - 20"	5.0		
13 1/2"	656.0	K55	54.5
9 5/8"	1720.0	K55/L80	40.0

STATUS: Well completed as a gas injection/withdrawal well

WELL SITE GEOLOGIST: Roger Blake

COMPANY SUPERVISION: Wally Westman

WIRELINE LOGGING: Schlumberger

MUD LOGGING: Halliburton

MUD SURVEY: Halliburton

CEMENTING & TESTING: Halliburton

CORING: Corepro

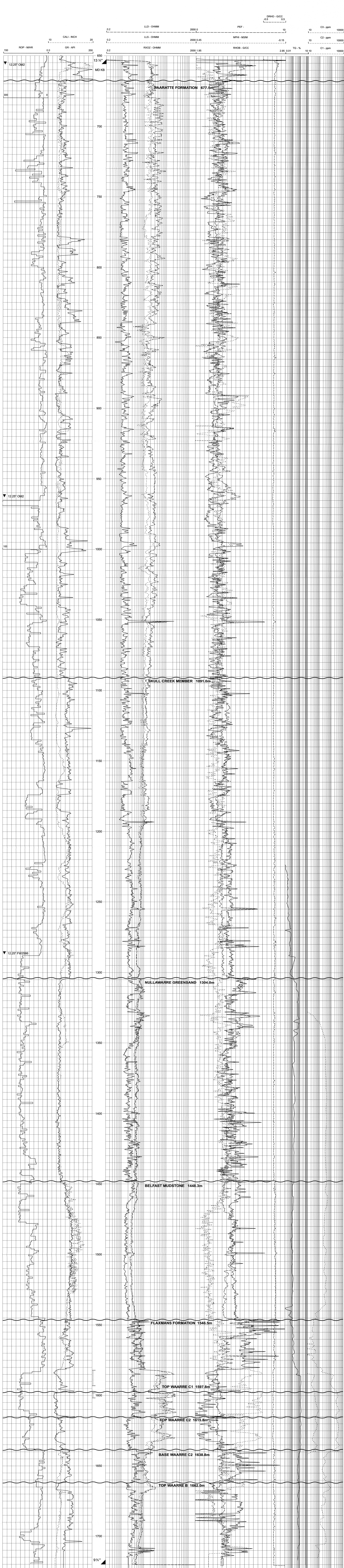
DIRECTIONAL SURVEYS: Sperry Sun / GyroData

SEISMIC LINES: INLINE 6397.19
 CROSSLINE 2383.88

LEGEND

▼ Bit	⊗ Cement Plug (No.)	⊙ Gas Show
▲ Casing Shoe	▨ Core	□ Packer
Perforations	▨ No recovery	

* All depths are measured depths relative to KB



Final Total Depth 1720m MDRB (driller)