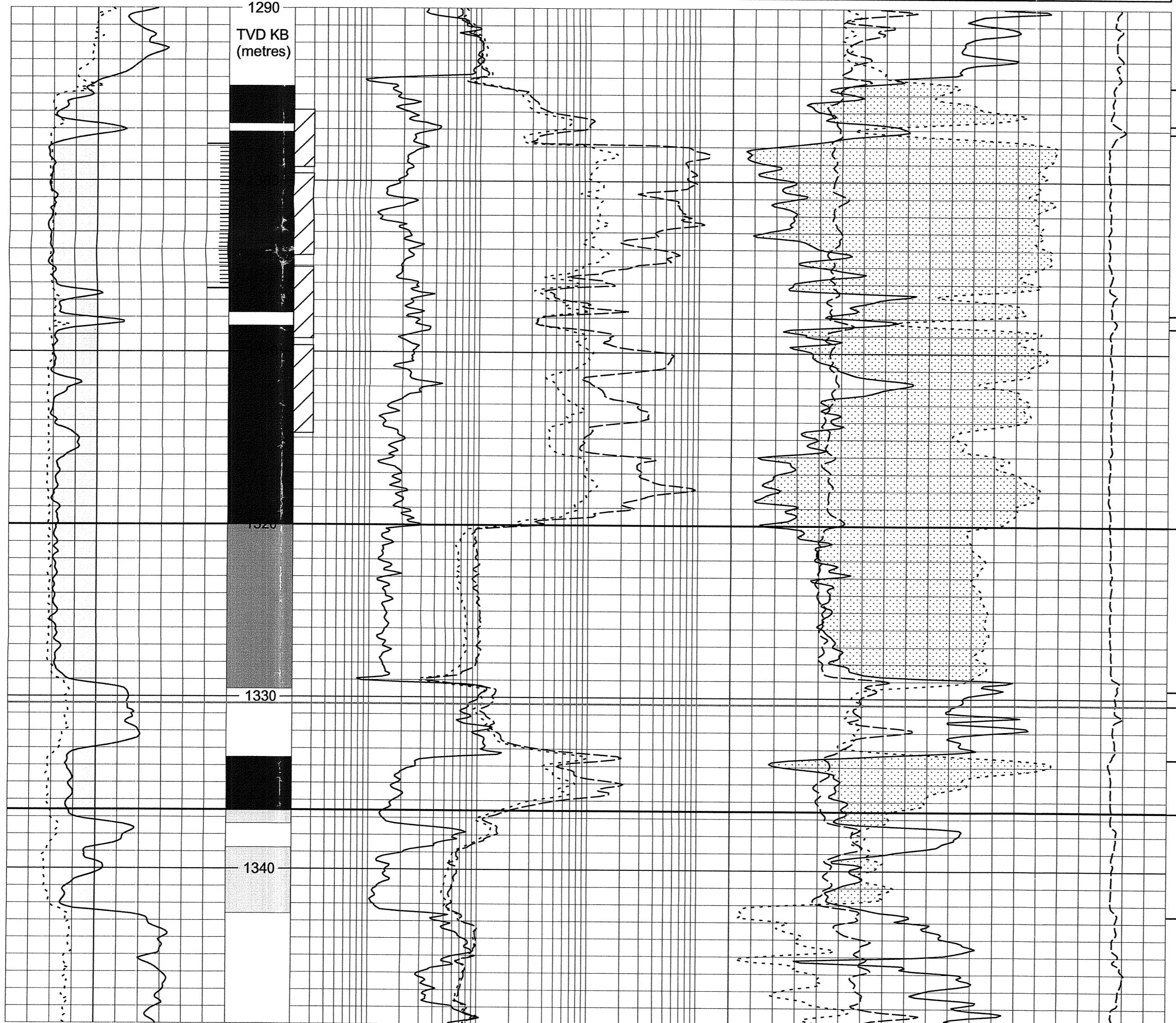


IONA-4

DRHO - G/CC
-0.5 0.5



KB 134.98m ASL

Datumed to current 'C' Sand GWC (June '99)

Zone	TVDKB	TVDSS	MDKB	TVSS
C1	1294.5	-1159.5	1447.0	-1159.5
	1296.6	-1161.6	1450.2	-1161.6
	1297.2	-1162.2	1451.2	-1162.2
C1 10.6m gross				
C2	1307.8	-1172.8	1467.6	-1172.8
	1308.5	-1173.5	1468.6	-1173.5
C2 21.1m gross				
CGWC (C sands)	1320.0	-1185.0	1486.4	-1185.0
OGWC (C sands)	1329.6	-1194.6	1501.2	-1194.6
	1330.3	-1195.3		-1195.3
CGWC (B sand)	1333.5	-1198.5	1507.2	-1198.5
	1336.7	-1201.7	1512.2	-1201.7
B 9.1m gross				
	1342.6	-1207.6	1521.2	-1207.6

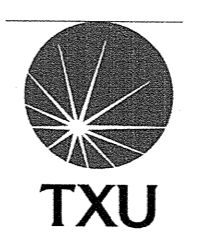
Enclosure 3.
 Well Composite Log - Reservoir
 Section by
 PetroVal Australasia Pty Ltd
 DEPT. NAT. RES. & ENV.
 PE605548



PetroVal Australasia Pty Ltd
 Valuers & Technical Advisers to the Upstream Oil & Gas Industry

LEGEND

- Gas
- Swept
- Water
- CGWC Current Gas Water Contact
- OGWC Original Gas Water Contact (OGWC Iona-1 Mar. 1988)
- CLKG Current Lowest Known Gas
- Perforation Interval
- Core



WESTERN UNDERGROUND GAS STORAGE PTY LTD

**IONA 4 COMPOSITE LOG
 RESERVOIR SECTION**

Based on TVD/MD Conversion
 from Definitive Survey