



COMPOSITE WELL LOG

IONA - 3

PERMIT: PPL-2

BASIN: OTWAY

STATE: VICTORIA

SURFACE COORDINATES:
AMG X 677330.3
Y 5728373.9

SPUDED: 11:30 hrs on 3 April 1999
REACHED TD: 19:15 hrs on 12 April 1999

BOTTOM HOLE COORDINATES
AMG X 677124.4
Y 5728102.6

RIG RELEASED: 17:00 hrs on 19 April 1999

ELEVATION: GL 129.98m AHD
KB 134.98m AHD

DRILLING CONTRACTOR: OD & E Rig 30

TOTAL DEPTH: DRILLER 1459.0
LOGGER 1452.0

Hole Sizes (inches)	From (m)	To (m)
24"	Surface	10.0
17 1/2"	10.0	635.0
12 1/2"	635.0	1459.0

STATUS: Well completed as a gas Injection/withdrawal well

WELLSITE GEOLOGIST: Roger Blake

Casing Size	Shoe (m)	Grade	Weight (lb/ft)
Surface - 20"	5.0		
13 1/2"	635.0	K55	54.5
9 1/2"	1459.0	K55/L80	40.0

COMPANY SUPERVISION: Wally Westman

WIRELINE LOGGING: Schlumberger

MUD LOGGING: Halliburton

MUD SURVEY: Halliburton

CEMENTING & TESTING: Halliburton

CORING: Corepro

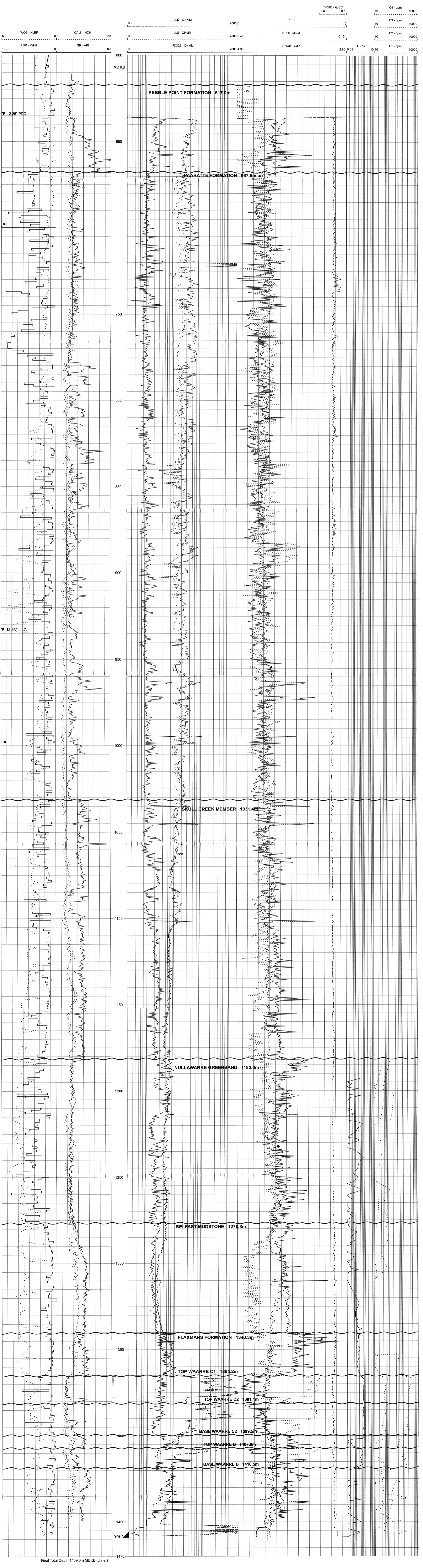
DIRECTIONAL SURVEYS: Sperry Sun / GyroData

SEISMIC LINES: INLINE 6414.55
CROSSLINE 2401.86

LEGEND

- ▼ Bit
- ☒ Cement Plug (No.)
- ⊗ Gas Show
- ▲ Casing Shoe
- ▨ Core
- Packer
- ▬ Perforations
- ▨ No recovery

* All depths are measured depths relative to KB



COMPOSITE WELL LOG

IONA - 3