

Geofframe  
 PROCESSED  
 INTERPRETATION

# DRIFT CORRECTED SONIC

Using the following logs: PAXIHALSDSI

COMPANY: Wessem Underground  
 WELL: IOANA #3  
 FIELD: IOANA  
 FIG: ODAE #30  
 STATE: VICTORIA  
 COUNTY: AUSTRALIA  
 Date Logged: 13-APR-1999 Date Processed: 10-AUG-99  
 Well Location: Otway Basin  
 Elevations: KB: 134.98m DF: 134.69m GL: 130m  
 API Number: Job Number: 561287

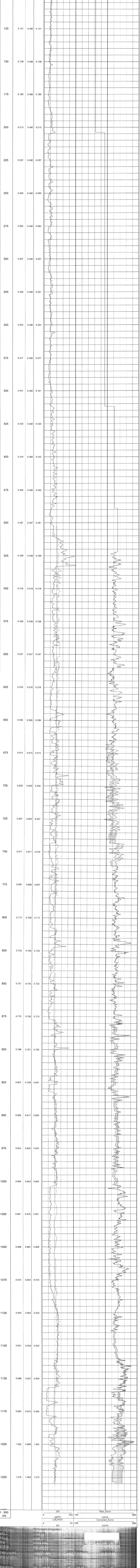
FOLD HERE The well name, location and borehole reference data were furnished by the customer.

All interpretations are opinions based on references from electrical or other measurements and we cannot, and do not guarantee the accuracy or correctness of any interpretation, and we shall not be held liable or responsible for any loss, costs, damages or expenses incurred or sustained by anyone resulting from any interpretations made by any of our officers, agents or employees. These interpretations are also subject to Clause 4 of our General Terms and Conditions as set out in our current Price Schedule.

Field Recording: Location: OEA Software Version: 8C1-205 Engineer: R.GERHARDT / Karthi  
 Office Recording: ICS Center: Baseline: gf\_3.5 Log Analyst: Yuri Sokovkov

Mud and Borehole Measurements:  
 Pts @ Measured Temperature: 0.2120hm @ 24degC BHT: 57.7degC Btsize: 12.25in  
 Pmf @ Measured Temperature: 0.1820hm @ 23degC Type Fluid in Hole: KCL/EZ MUD/POLYMER  
 Pmc @ Measured Temperature: 0.140hm @ 23degC Mud Density: 1.1g/cm3

Remarks:  
 BOLT AIR GUN USED FOR SEISMIC SOURCE. SIZE OF CHAMBER = 200 CU. IN.  
 AZIMUTH OF AIR GUN TO WELL HEAD = 216.5 deg.  
 DISTANCE FROM AIR GUN TO WELL HEAD = 295 MTRS.  
 ELEVATION OF AIR GUN = 104.2 MTRS.  
 ELEVATION OF HYDROPHONE = 104.7 MTRS.



COMPANY: Wessem Underground  
 WELL: IOANA #3  
 FIELD: IOANA  
 FIG: ODAE #30  
 STATE: VICTORIA  
 Date Logged: 13-APR-1999 Date Processed: 10-AUG-99  
 Well Location: Otway Basin  
 Elevations: KB: 134.98m DF: 134.69m GL: 130m  
 API Number: Job Number: 561287