

COMPANY GFE Resources Ltd.

WELL Iona #2

FIELD Iona

STATE Victoria

RIG Century Rig-11

LOCATION Iona 03-01

WELL Iona #2

COMPANY GFE Resources Ltd.

AP SERIAL NO. VP 2482

MSL Elev. 0.0 M

Log Measured From KB 134.3 M above Perm. Datum

Drilling Measured From KB

Date 03-03-1994

Run No. 1

Depth Driller 1435.0 M

Depth Logger (Schl.) 1437.0 M

Blm. Log Interval 1435.0 M

Top Log Interval 895.0 M

Type Fluid In Hole Brine

Salinity NaCl 8.10 LB/G

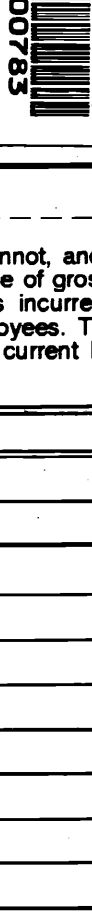
Fluid Level

Max. Rec. Temp.

Deviation 26 DEG

Logger on Bottom 0927 03-03-1994

Equip. Location 6360 OCA



The well name, location and borehole reference data were furnished by the customer.

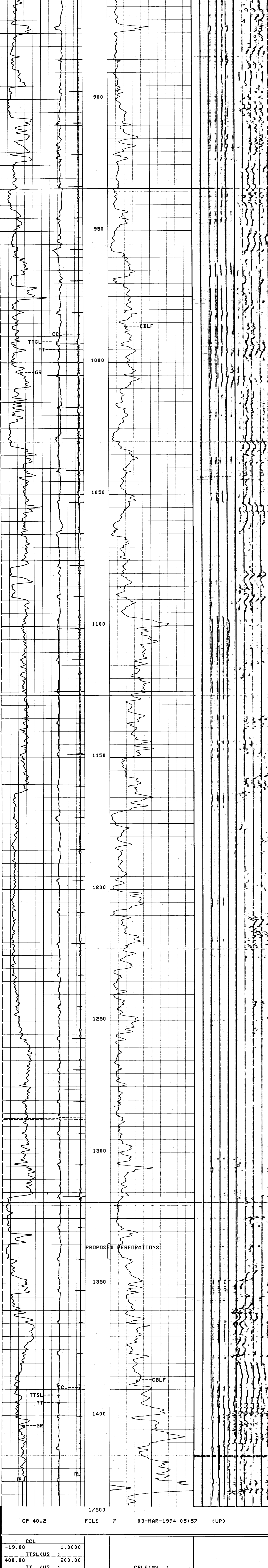
All interpretations are opinions based on inferences from electrical or other measurements and we cannot, and do not guarantee the accuracy or correctness of any interpretations, and we shall not, except in the case of gross or willful negligence on our part, be liable or responsible for any loss, costs, damages or expenses incurred or sustained by anyone resulting from any interpretations made by any of our officers, agents or employees. These interpretations are also subject to Clause 4 of our General Terms and Conditions as set out in our current Price Schedule.

Run No.	1
Service Order No.	
Logging Speed	800.0 F/HR
EQUIPMENT DATA	
Tool Number 1	TCM-AB 16
Tool Number 2	STM-CA 208
Tool Number 3	WDM-AB 836
Tool Number 4	TCC-B 555
Tool Number 5	SGC-SA 1278
Tool Number 6	SLS-CB 298
Tool Number 7	SLR-CB 259
Tool Number 8	SDC-CB 227
Tool Number 9	CAL-YA 576
Tool Number 10	
Tool Number 11	
Tool Number 12	
REMARKS:	
Log correlated to DLL-MSFL-GR, Run #1. (25-Feb-94)	
Tool run centralised with 3 x gemcos.	
Cement job finished 03:30 01-03-1994.	
Pumped Class g cement with Heled 322.	
Recorded waveforms simultaneously with CBL.	
Well logged with no surface pressure applied to casing.	
Apparent top of cement at 320 m	

MAIN LOG 1:500

CCL	1.0000				
TTSL<US>	200.00	CBLF<MV>	100.00	VDL<US>	1200.0
TT<US>	200.00	CBLF<MV>	50.000		
GR<GAPI>	200.00				
0.0	200.00	0.0	50.000	200.00	1200.0

CP 40.2 FILE 7 03-MAR-1994 07:57 (UP)



CP 40.2 FILE 7 03-MAR-1994 05:57 (UP)

CCL	1.0000				
TTSL<US>	200.00	CBLF<MV>	100.00	VDL<US>	1200.0
TT<US>	200.00	CBLF<MV>	50.000		
GR<GAPI>	200.00				
0.0	200.00	0.0	50.000	200.00	1200.0