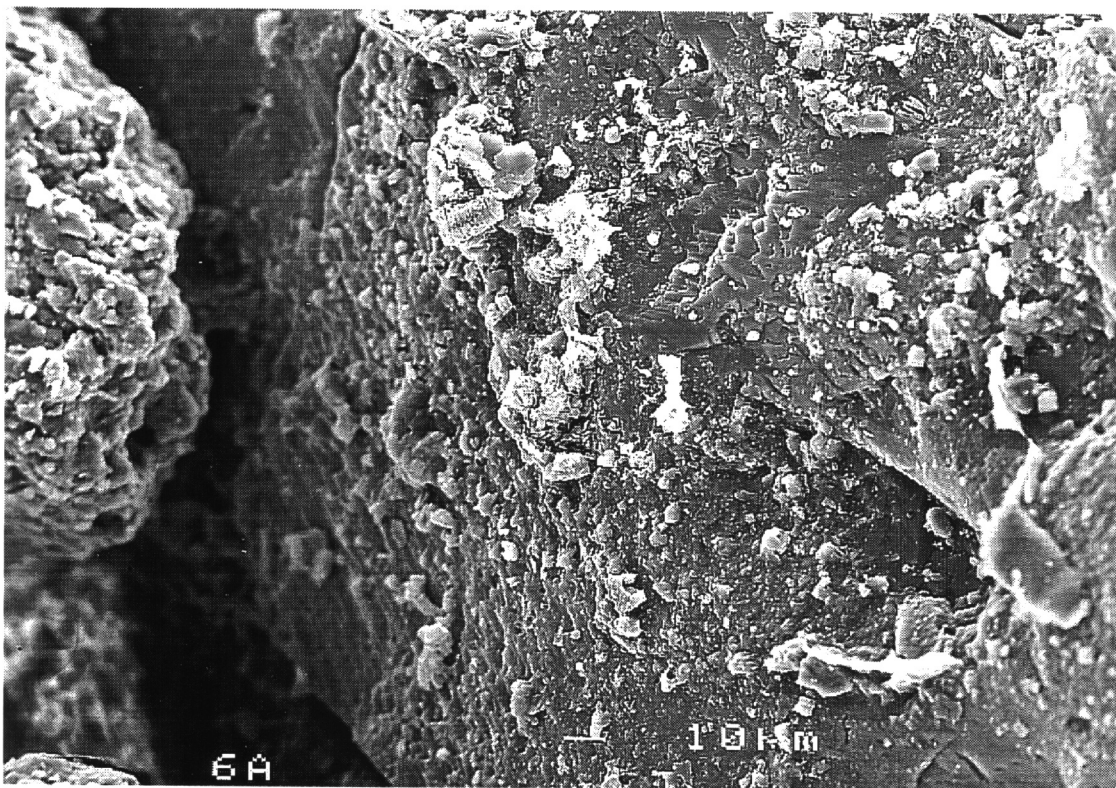


**Plate 7: Sample # 2 (1307.50m)** SEM photomicrograph showing well developed submicron sized pseudo-hexagonal kaolinite platelets. The absence of etch pits indicates that no discernible pitting, corrosion or etching has occurred during the cleaning process. Note that the detrital quartz grains exhibit some degree of corrosion. Scale bar = 10  $\mu$ m.



**Plate 8: Sample # 6 (1312.40m)** SEM photomicrograph showing that the pores are well interconnected in a 3-D network giving good permeability. It seems unlikely for the kaolinite booklets to move to block the pore spaces. Scale bar = 10  $\mu$ m.