

Plate 3: Sample # 2 (1307.50m) SEM photomicrograph showing general view of clean coarse to very coarse sandstones with traces of clay mineral assemblages dominated by authigenic kaolinite. Scale bar = 10 μm .

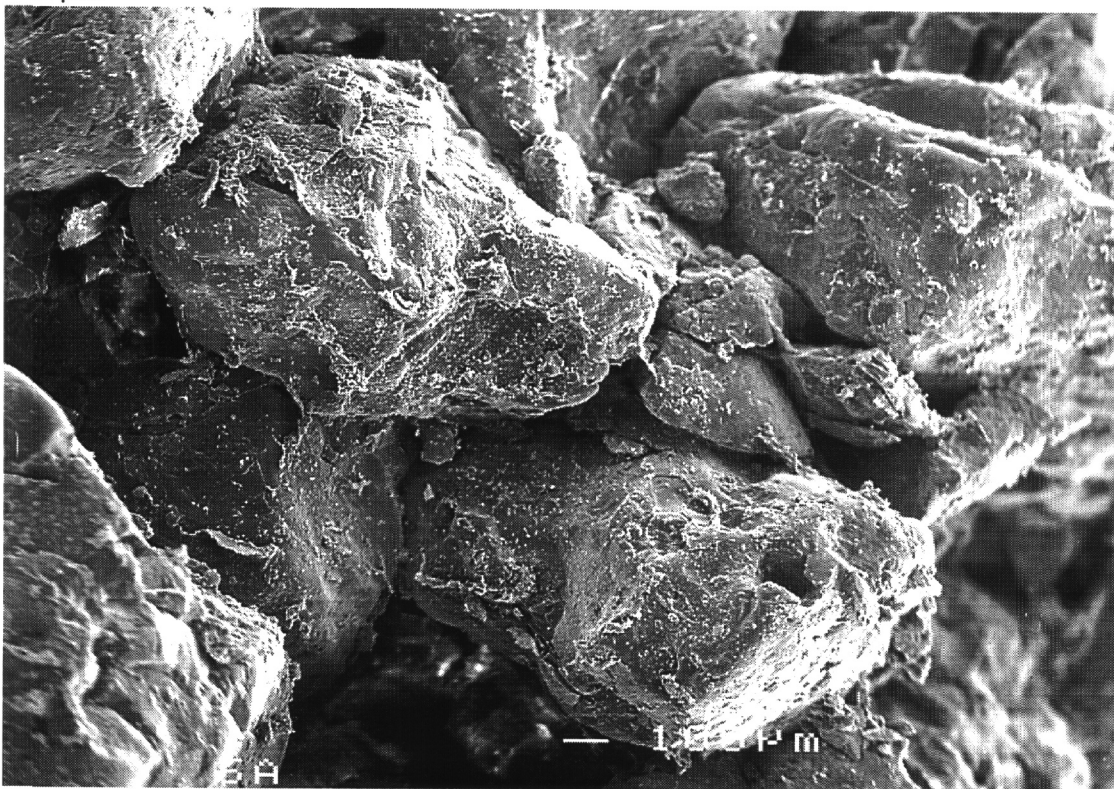


Plate 4: Sample # 6 (1312.40m) SEM photomicrograph showing general view of clean coarse to very coarse sandstones with traces of clay mineral assemblages dominated by authigenic kaolinite. Note the presence of a few large masses of 'ragged edged' materials exhibiting moderately well developed parallel alignment of crystallites coating some of the detrital grains, most likely represent drilling mud. Scale bar = 10 μm .