

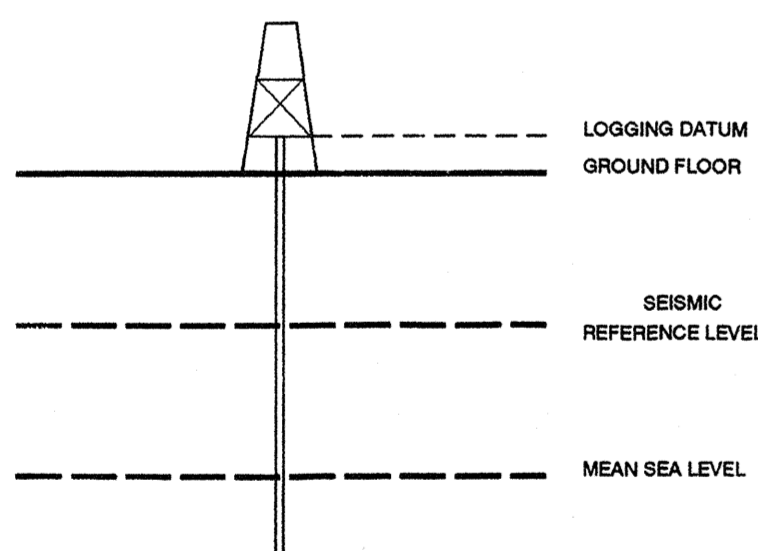
MELBOURNE LOG
INTERPRETATION
CENTRE

Schlumberger

SEISMIC CALIBRATION LOG

(Adjusted Continuous Velocity Log) PLOT 2

Company: WESTERN UNDERGROUND GAS STORAGE
Well: IONA OBS-1
Field: IONA
Country: AUSTRALIA
Reference No: Interval: 1540.46 to 698.00
Date Logged: 24-FEB-1999 Date Processed: N.A.
Location: Latitude: Longitude:
Elevations: KB: 137.50 DF: 137.20 GL: 132.50
Permanent Datum: MSL Depth Units: METRES
FIELD RECORDING: Engineer: R. GERHART Location: Program Version: 700-427
COMPUTATION: Analyst: Y.SOLOVYOV Centre: SYJ Baseline: 20.5
ELEVATION ABOVE MEAN SEA LEVEL
Logging Datum: 137.50
Seismic Reference Datum: 0.00



Total Number of Levels: 18
Depth Reference: SRD
Time Reference: SRD

Run	Date	Tool Type	Bit Size/Depth	Casing Size/Depth	Top Depth	Bottom Depth
1	25-08-95	DLL-LDL-GR	17.5 IN	13.3 IN	106 M	658 M
2	12-09-95	DLL-LDL-GR	12.2 IN	13.3 IN	655 M	2755 M

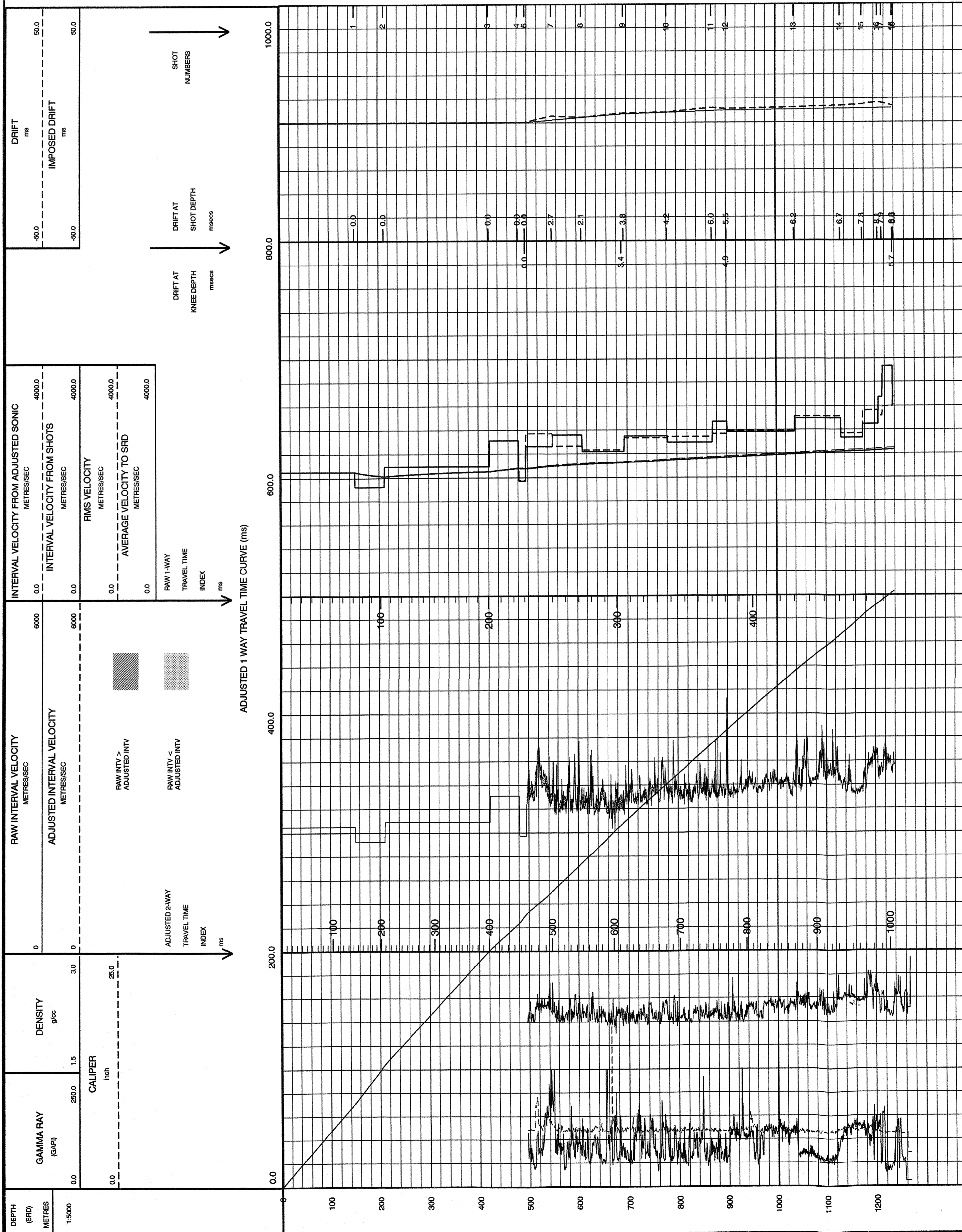
VSP Run	Date	Gun Offset	Hydro Offset	Gun Elevation	Hydro Elevation	Gun Azimuth	Hydro Azimuth
1	15-08-95	590 M	590 M	-101.9 M BELOW MSL	-102.4 M BELOW MSL	127 DEG	127 DEG

REMARKS

FOLD HERE

The well name, location and borehole reference data were furnished by the customer.

All interpretations are optional based on inferences from electrical or other measurements and we cannot, and do not guarantee the accuracy or correctness of any interpretations, and we shall not, except in the case of gross or willful negligence on our part, be liable or responsible for any loss, costs, damages or expenses incurred or sustained by anyone resulting from any interpretations made by any of our officers, agents or employees. These interpretations are also subject to Clause 4 of our General Terms and Conditions as set out in our current Price Schedule.



COMPANY: W.U.G.S.
FIELD: IONA
WELL: IONA OBS-1
COUNTRY: AUSTRALIA

