

DUAL LATEROLOG MLL SONIC CR

1:500

LOCATION	PEP 100	PRVING/CO.	VICTORIA
FIELD	WILDCAT		
WELL	INGLEBY #1		
COMPANY	GAS AND FUEL EXPLORATION N.L.		
PERMIT NUMBER	PEP 100	COUNTRY/STATE	AUSTRALIA
PROVINCE/COUNTY	VICTORIA		
LOG MEASURED FROM	K. 8. 117.3 M ABOVE PERMANENT DATUM	LOG MEASURED FROM	K. 8. 117.3 M ABOVE PERMANENT DATUM
DATE	26-OCT-90	DATE	26-OCT-90
RUN NUMBER	ONE	RUN NUMBER	ONE
DEPTH-CORRECTED	328.0 M	DEPTH-CORRECTED	328.0 M
LAST READING	64.4 M	LAST READING	64.4 M
CASING-DRILLER	63.5 M	CASING-DRILLER	63.5 M
CASING-COOPER	63.5 M	CASING-COOPER	63.5 M
BIT SIZE	6.5 INS	BIT SIZE	6.5 INS
HOSE FLUID TYPE	KGL/CFL	HOSE FLUID TYPE	KGL/CFL
DRS FLUIDS	9.4	DRS FLUIDS	9.4
DRS FLUIDS	9.4	DRS FLUIDS	9.4
SAMPLE SIZES	2.2	SAMPLE SIZES	2.2
RF @ MEAS TEMP	.28 @ 20.3C	RF @ MEAS TEMP	.28 @ 20.3C
RF @ MEAS TEMP	.43 @ 21.6C	RF @ MEAS TEMP	.43 @ 21.6C
RF @ MEAS TEMP	.23 @ 21.6C	RF @ MEAS TEMP	.23 @ 21.6C
SOURCE: RHT/REC	2.3 @ 21.6	SOURCE: RHT/REC	2.3 @ 21.6
RF @ MEAS TEMP	4.3 @ 21.6	RF @ MEAS TEMP	4.3 @ 21.6
RF @ MEAS TEMP	4.3 @ 21.6	RF @ MEAS TEMP	4.3 @ 21.6
EQUIPMENT/BASE	V10501 B813	EQUIPMENT/BASE	V10501 B813
RECORDED BY	R. TENCH	RECORDED BY	R. TENCH
VI/INSTRUMENT	A. TABASSI	VI/INSTRUMENT	A. TABASSI
ON BOTTOM	02:30 HRS	ON BOTTOM	02:30 HRS

BOREHOLE RECORD		CASING RECORD	
RUN NUMBER	BIT FROM TO	SIZE	WEIGHT FROM TO
ONE	6.5 INS CSG. SHOE	T.D.	9 5/8 INS 47 LB/FT SURFACE CSG. SHOE

EQUIPMENT	RUN 1	RUN 2	RUN 3	RUN 4
LSU	005			

REMARKS  
 DUAL LATEROLOG MLL SONIC CR 1:500  
 WELL CIRCULATED FOR 1 HR. CIRCULATION STOPPED AT 22:00 HRS.  
 LATITUDE 36 18' 53.6" S. LONG 143 47' 44.8" E.  
 MEASURING WHEEL CALIBRATION 1.01935

SYSTEM CONFIGURATION DATES: LOGGED 06.FEB.90 PROCESSED ..... PLOTTED 06.FEB.90

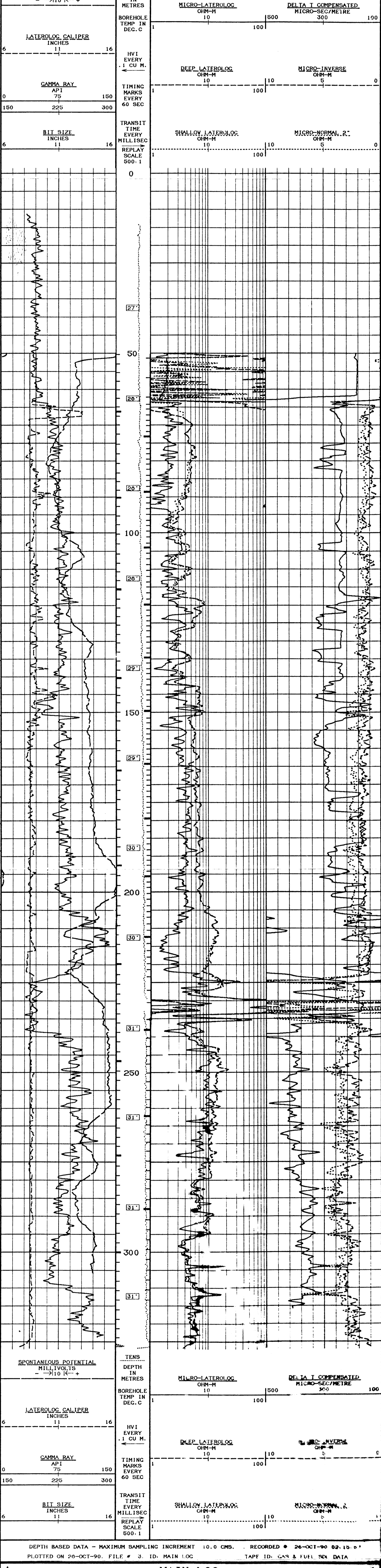
ALL INTERPRETATIONS ARE OPINIONS BASED ON INFERENCES FROM ELECTRICAL OR OTHER MEASUREMENTS AND WE CANNOT AND DO NOT GUARANTEE THE ACCURACY OR CORRECTNESS OF ANY INTERPRETATIONS. AND WE SHALL NOT BE LIABLE OR RESPONSIBLE FOR ANY LOSS, COSTS, DAMAGES OR EXPENSES INCURRED OR SUSTAINED BY ANYONE RESULTING FROM ANY INTERPRETATION MADE BY ANY OF OUR OFFICERS, AGENTS OR EMPLOYEES. THESE INTERPRETATIONS ARE ALSO SUBJECT TO OUR GENERAL TERMS AND CONDITIONS AS SET OUT IN OUR CURRENT PRICE SCHEDULE.

AFTER SURVEY CALIBRATION

MICRO-LATEROLOG CHECK	BEFORE SURVEY CHECK 25-OCT-90 10:11	AFTER SURVEY CHECK 26-OCT-90 03:09	
BEFORE (OHMM)	12.0	AFTER (OHMM)	12.0
MICRO-NORMAL & MICRO-INVERSE CHECK	BEFORE SURVEY CHECK 25-OCT-90 10:11	AFTER SURVEY CHECK 26-OCT-90 03:09	
MICRO-NORMAL (OHMM)	BEFORE 61.1	AFTER 61.1	
MICRO-INVERSE (OHMM)	BEFORE 33.9	AFTER 34.0	
DUAL LATEROLOG CHECK	BEFORE SURVEY CHECK 25-OCT-90 10:10	AFTER SURVEY CHECK 26-OCT-90 03:08	
SHALLOW (OHMM)	BEFORE 113.6	AFTER 113.7	
DEEP (OHMM)	BEFORE 65.4	AFTER 65.1	
CRONINGEN (OHMM)	BEFORE 65.4	AFTER 65.0	
GAMMA CALIBRATION	FIELD CALIBRATED ON 25-OCT-90 10:16		
BACKGROUND CALIBRATOR (GROSS)	BEFORE (API)	AFTER (API)	
CALIBRATOR (NET)			
LATEROLOG CALIPER CHECK	FIELD CALIBRATED ON 25-OCT-90 10:19		
REF. 1	BEFORE (IN.)	AFTER (IN.)	
REF. 2			

MAIN LOG

DEPTH BASED DATA - MAXIMUM SAMPLING INCREMENT 10.0 CMS. RECORDED 26-OCT-90 02:15:57  
 PLOTTED ON 26-OCT-90. FILE # 3. ID. MAIN LOG TAPE ID. GAS & FUEL SCL DATA



DEPTH BASED DATA - MAXIMUM SAMPLING INCREMENT 10.0 CMS. RECORDED 26-OCT-90 02:15:57  
 PLOTTED ON 26-OCT-90. FILE # 3. ID. MAIN LOG TAPE ID. GAS & FUEL SCL DATA

MAIN LOG

BEFORE SURVEY CALIBRATION

SONDE SERIAL NUMBERS

DFE DLP 005. DLE 005  
 BCA  
 NCS

BCA LOGGING CONSTANTS  
 MATRIX INTERVAL TRANSIT TIME 155.0 MICRO-SEC/MEIRE  
 FLUID INTERVAL TRANSIT TIME 620.1 MICRO-SEC/MEIRE  
 RESISTIVITY INDEX 1.00 MICRO-SEC/FT  
 DISCRIMINATOR LEVEL 1  
 SONIC POROSITY MATRIX LIMESTONE  
 SONIC SONDE TYPE STANDARD

DFE LOGGING CONSTANTS  
 BIT SIZE 6.5000 IN.  
 SONDE CONFIGURATION LATEROLOG & MICROLOG (MNRL, MINV & MLL)  
 SONDE TYPE 5100.0000  
 VOLTAGE REFERENCE ARMOUR  
 DELTA T REJECTION 50 OHM  
 IVA K FACTOR 0.0000 IN.  
 DLI K FACTOR 1.4500  
 CL K FACTOR 0.0200  
 MNRL K FACTOR 0.6130  
 MINV K FACTOR 0.3350  
 MLL K FACTOR 0.0230

MICRO-LATEROLOG CALIBRATION  
 BASE CALIBRATION BASE CALIBRATED ON 15-OCT-90  
 REF. 1 MEASURED CALIBRATED (OHMM) FIELD CHECK ON 26-OCT-90 10:11  
 REF. 2 956.7 230.0  
 INTERNAL CALIBRATOR AT BASE (OHMM)  
 INTERNAL FIELD CHECK (OHMM) 12.0

MICRO-NORMAL & MICRO-INVERSE CALIBRATION  
 BASE CALIBRATION BASE CALIBRATED ON 16-OCT-90 12:04  
 REF. 1 MEASURED CALIBRATED (OHMM) FIELD CHECK ON 26-OCT-90 10:11  
 REF. 2 50.1 30.6 49.7 16.9  
 INTERNAL CALIBRATOR AT BASE (OHMM) MICRO-INVERSE (OHMM)  
 INTERNAL FIELD CHECK (OHMM) MICRO-INVERSE (OHMM)  
 61.1 33.9

DUAL LATEROLOG CALIBRATION  
 BASE CALIBRATION BASE CALIBRATED ON 16-OCT-90  
 REF. 1 MEAS'D CALIB'D (OHMM) DEEP CALIB'D (OHMM) CRONINGEN CALIB'D (OHMM)  
 REF. 2 1006.3 1430.0 1002.9 020.0 990.4 020.0  
 INTERNAL CALIBRATOR AT BASE (OHMM) DEEP (OHMM) CRONINGEN (OHMM)  
 INTERNAL FIELD CHECK (OHMM) DEEP (OHMM) CRONINGEN (OHMM)  
 113.6 65.4 65.4

SP CALIBRATION  
 MEASURED CALIBRATED (MV) FIELD CALIBRATED ON 16-OCT-90  
 REF. 1 105.6 101.0  
 REF. 2 -104.3 -101.0

GAMMA CALIBRATION  
 MEASURED CALIBRATED (API) FIELD CALIBRATED ON 25-OCT-90 10:16  
 BACKGROUND CALIBRATOR (GROSS) 68 64  
 CALIBRATOR (NET) 670 824

LATEROLOG CALIPER CALIBRATION  
 BASE CALIBRATION BASE CALIBRATED ON 16-OCT-90 12:21  
 REF. 1 65126 104200 308646 365206 365566  
 REF. 2 6.01 11.02 16.01 17.73 17.74  
 INTERNAL CALIBRATOR AT BASE (IN.) CALIBRATED (IN.)  
 REF. 1 7.99 6.01  
 REF. 2 11.92 11.02

COMPANY GAS AND FUEL EXPLORATION N.L.  
 WELL INGLEBY #1  
 FIELD WILDCAT  
 PROVINCE/COUNTY VICTORIA  
 COUNTRY/STATE AUSTRALIA