

COMPANY GAS & FUEL EXPLORATION N/L DEPTH LOGGED FROM 13m
 RIG DRILLCORP TO 331.2m
 WELL INGLEBY 1 DATE LOGGED FROM 23/10/90
 FIELD WILDCAT TO 25/10/90
 COUNTRY AUSTRALIA - VICTORIA G.L. 114.0m asl
 CO-ORDINATES 38°18'53.6"S, 143°47'44.8"E K.B. 117.3m asl

GEARHART PTY. LTD.
Geodata Services
 AUSTRALIA Telephone: (08) 46 9333
 No. AH1500100 Telex: AA87137

LITHOLOGY
 SANDSTONE LIMESTONE CALCAREOUS LITHICS
 SILTSTONE CEMENT FOSSILIFEROUS CHLORITE
 CLAYSTONE GLAUCONITE
 COAL PYRITE

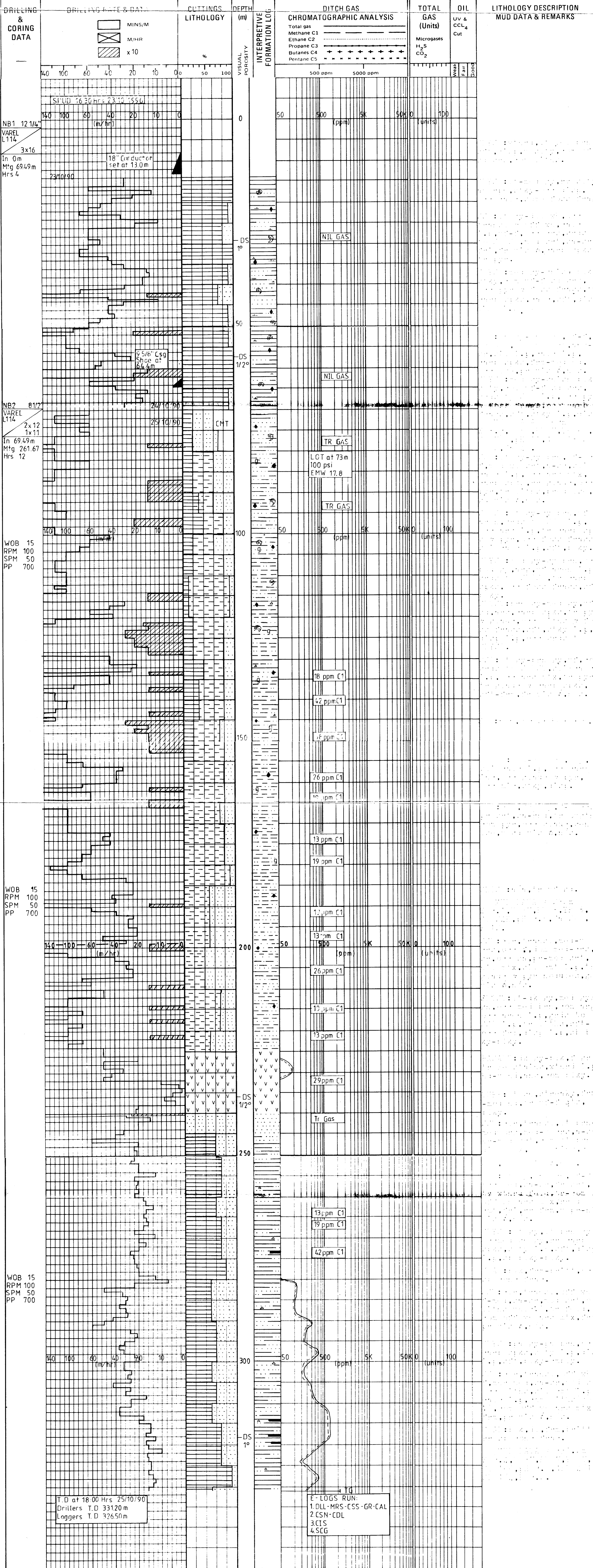
LOGGING ENGINEERS
 1 JIM MITCHELL
 2 PETER BEIER
 3
 4
 CHROMATOGRAPH SHIMADZU GC-8A
 TOTAL GAS RECORDER SHIMADZU GC-8A
 H₂S RECORDER

ABBREVIATIONS
 Z NB New bit
 NCB New core bit
 C Coring
 CS Casing shoe
 SWC Sidewall cores
 EL Electric log
 RRB Rerun bit
 WOB Weight on bit
 RPM Revolutions per minute
 PP Pump pressure
 SPM Strokes per minute
 CR Circulated returns
 FR Floor returns
 NR No returns
 TG Trip gas
 CG Connection gas
 DS Directional survey
 WT Wiper trip
 POH Pull out of hole
 RIH Run in hole
 WOW Wait on weather
 LAT Logged after trip
 LCM Lost circulation material
 DC Depth connection
 DST Drill stem test

INSTRUMENTS CHECKED DAILY
 24 HRS. LOGGING SERVICE

SCALE 1:500

MUD TYPE		POROSITY (Visible or inferred from texture)		CASING AND HOLE DATA			
MUD DATA		MATRIX POROSITY	VUGULAR POROSITY	BIT SIZE	HOLE DEPTH	CASING SIZE	CASING SHOE
W Weight lb/gal	CK Cake thickness 32nd inch	slightly porous < 10%	Isolated vugs < 10%	12 1/4"	69.49m	9 5/8"	64.4m
MG Mud gradient psi/1000 ft	S Salinity gm/ltr Cl	porous 10-30%	Isolated vugs > 10%	8 1/2"	313.20m		
V Funnel viscosity sec/qt	SD Sand content % by volume	Mixed porosity > 10%	Visibly interconnected vugs < 10%				
PV Plastic viscosity Cps	O Oil content % by volume						
YP Yield point lbs/100 ft	WL Water loss % by volume						
GEL Gel strength lbs/100 ft	SOL Solids content % by volume						
pH	pl Alkalinity of filtrate						
F Filtrate API ml/30 minutes	GYP Gypsum total/dissolved						



T.D at 18:00 Hrs 25/10/90
 Drillers T.D 331.20m
 Loggers T.D 326.50m

E-LOGS RUN:
 1. DLL-MRS-CSS-GR-CAL
 2. CSN-CDL
 3. CIS
 4. SCG