

HOWMANS-1

FLAXMANS-1

CURDIEVALE-1

CURDIE-1

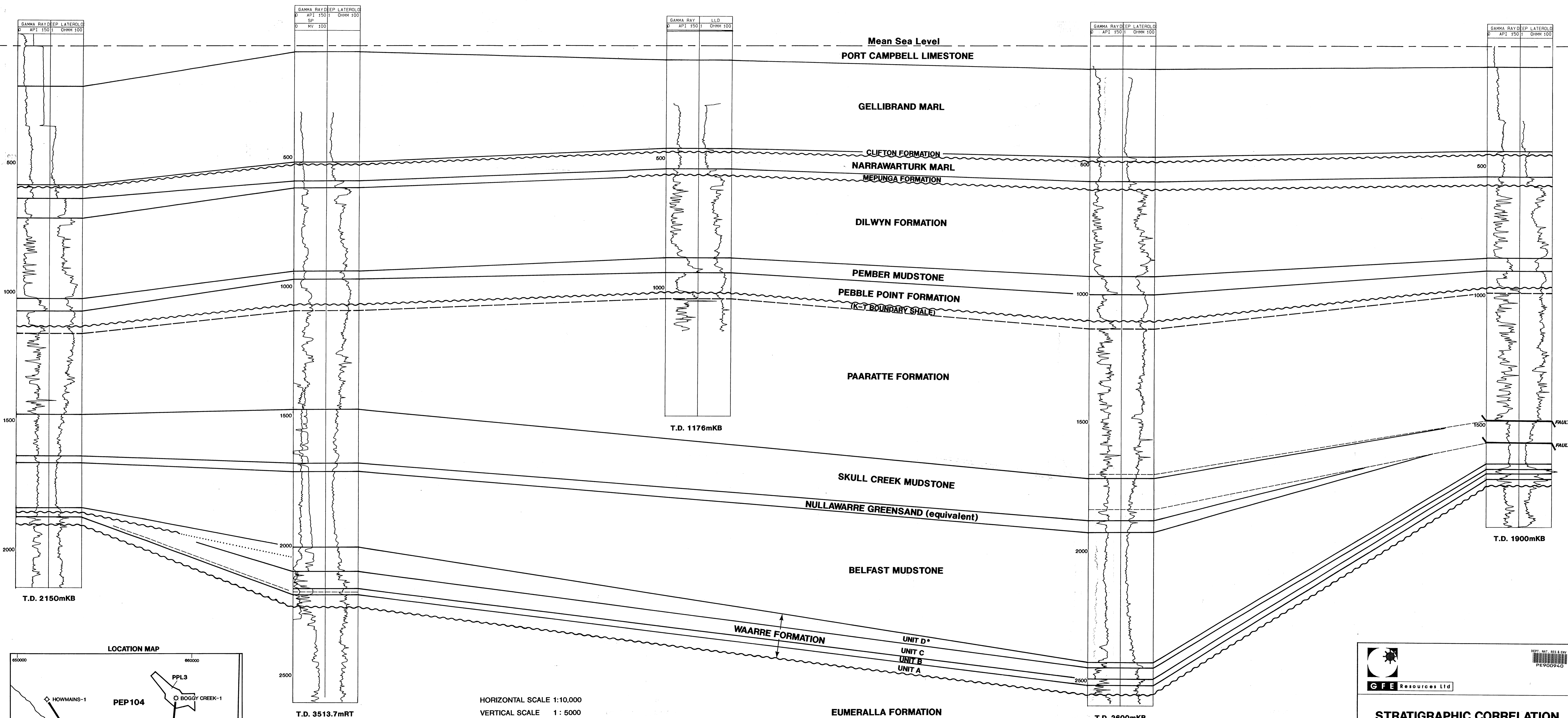
BOGGY CREEK-1

2.15km

2.9km

3.3km

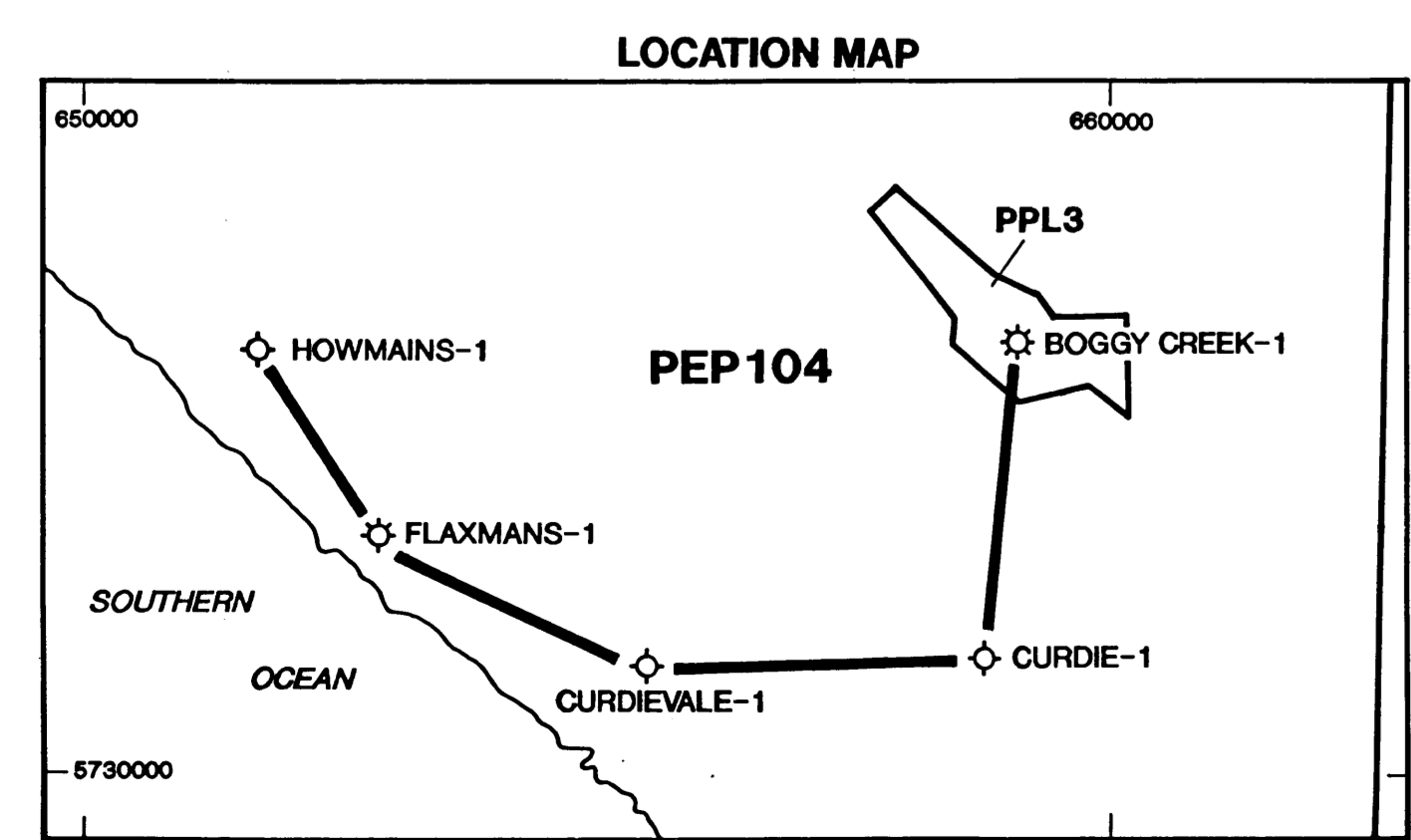
3.1km




HORIZONTAL SCALE 1:10,000  
 VERTICAL SCALE 1:5000

NOTE: Some of the formation tops shown here in Flaxmans-1, Curdievale-1, Curdie-1 & Bogy Creek-1, differ from those given in the respective Well Completion Reports.

\* Also known as the Flaxman Formation



 <b>GFE Resources Ltd</b>		<small>DEPT. NAT. RES. &amp; ENV. PE900940</small>
<b>STRATIGRAPHIC CORRELATION          HOWMANS-1 TO BOGGY CREEK-1          (Via Flaxmans-1, Curdievale-1 &amp; Curdie-1)</b>		
AUTHOR: KEVIN LANIGAN	APPROVED: S.YU	
DATE: JANUARY, 1995	ENCLOSURE No. 9	
SCALE: AS SHOWN	DRG No. OT.4789	
DRAWN BY: D.RUSSO		

(From Howmans-1 Well Completion Report)