

SCHLUMBERGER**COMPENSATED
FORMATION DENSITY LOG**

Gamma Gamma

DEPT. NAT. RES. & ENV.
PE604452

COUNTY AUSTRALIA

FIELD or LOCATION WILDCAT

WELL HAWKESDALE #1

COMPANY SHELL

COMPANY SHELL DEVELOPMENT PTY. LTD.

W.C.R. Encl. 4e

WELL HAWKESDALE #1

FIELD WILDCAT OTWAY BASIN

COUNTY AUSTRALIA STATE VICTORIA

Location: LATITUDE 33° 04' 51" S

LONGITUDE 142° 17' 57" E

Other Services: IES

Sec. _____ Twp. _____ Rge. _____

Permanent Datum: _____

Log Measured From _____

Drilling Measured From _____

Date 13 DEC 69

Run No. 1

Type Log FDCGR

Depth—Driller 3860

Depth—Logger 3839

Bottom logged interval 3838

Top logged interval 2400

Type fluid in hole FRESHWATER & Q BROXINE

Salinity, PPM Cl. _____

Density _____

Level SURFACE

Max rec. temp., deg F. 136

Operating rig time 4 HRS

Recorded by KERVELLA, MARC HAM

Witnessed by VEENEMA, POLL

RUN _____

BORE-HOLE RECORD

Casing RECORD

No. _____ Bit _____ From _____ To _____

Size _____ Wgt. _____ From _____ To _____

The well name, location and borehole reference data were furnished by the customer.

EQUIPMENT DATA

Run No.	PG P-	PGD	PGC	PGS-	Source No.	SFT-106	SGH	Logging Unit	Location
1	A 125	D 177	B 134					4522	SAL
2									
3									

CALIBRATION DATA

Run No.	Gamma Ray			FDC — Before Log — ACPS		FDC — After Log — ACPS	
	API Scale	Background CPS	Total CPS	P ₁	P ₂	P ₁	P ₂
1	150	40	400	438	816	438	816
2							
3							

LOGGING DATA

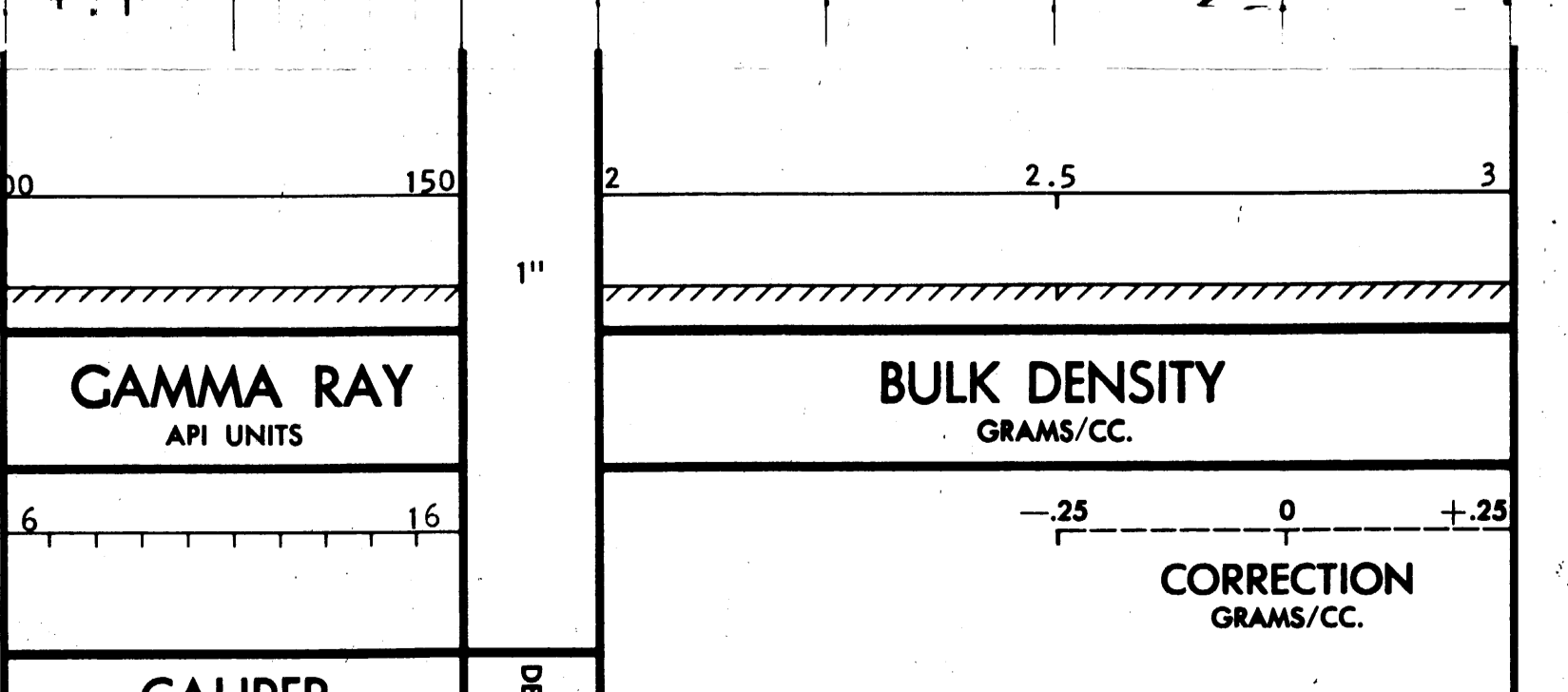
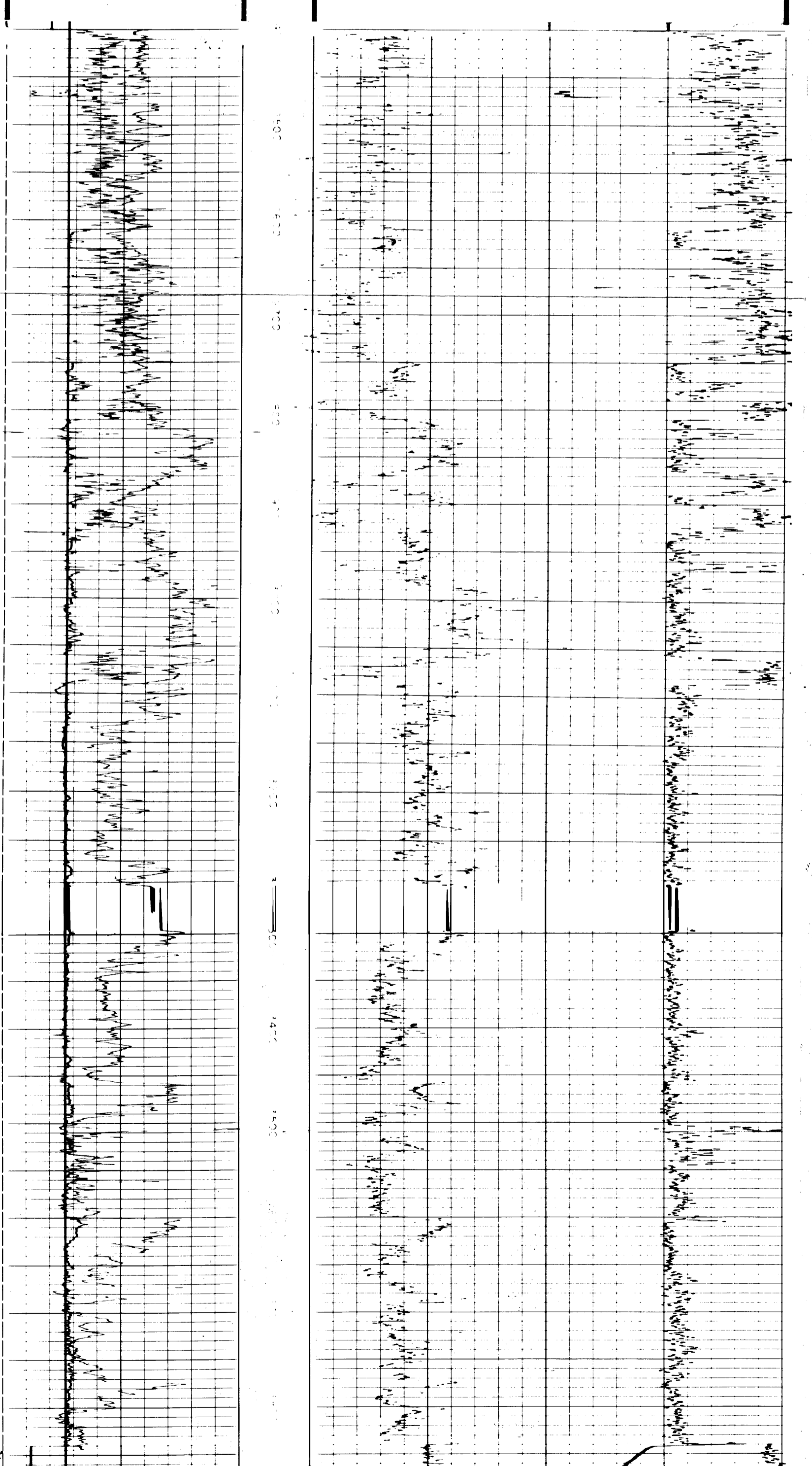
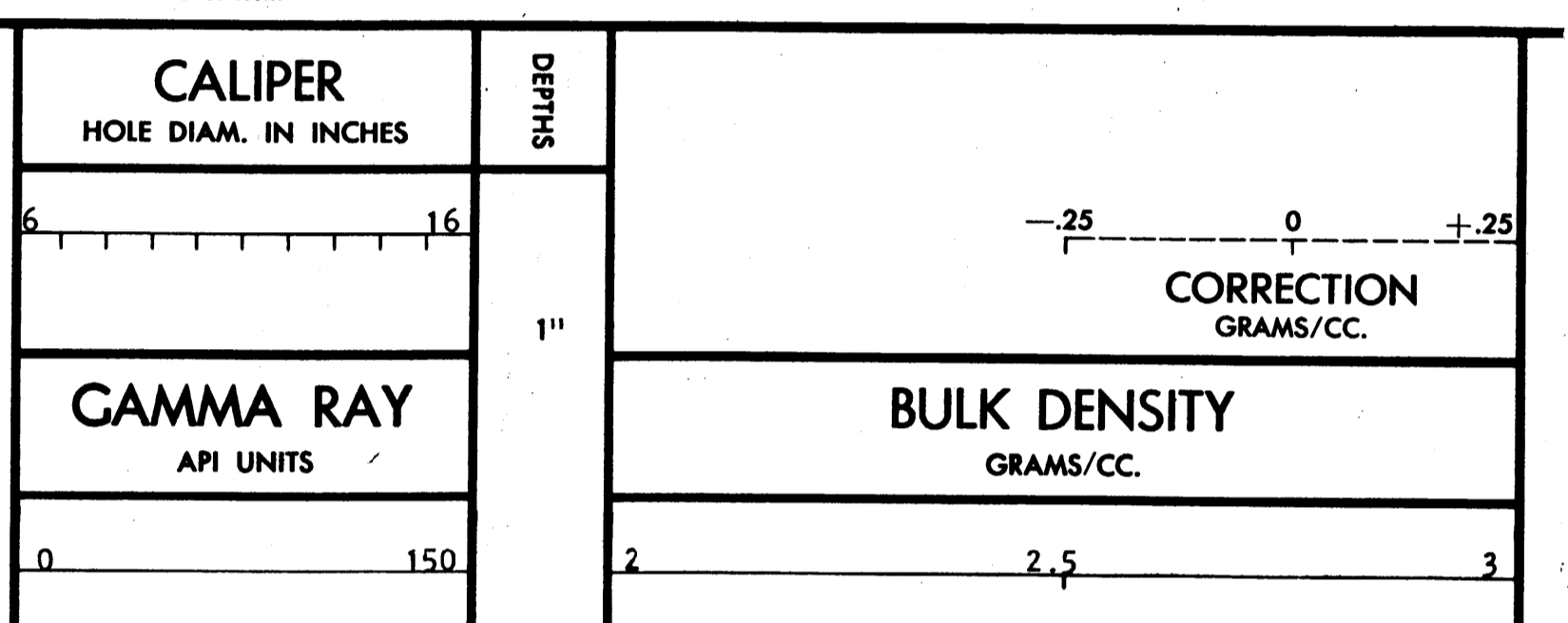
Run No.	General		Speed Ft./Min.	Tc	Gamma Ray		FDC Selectors			Porosity Scale
	From	To			API Scale	Liquid Density	Grain Density	Hole Fluid		
1	3838	2400	20	3	150					

MUD DATA

Run No.	Rm.	@	°F	% Solids by Vol.	% Oil by Vol.	% Water by Vol.	Viscosity, Sec/Qt @	°F	Solids, Av. Sp. Gr.
1	2.6	@	90				@	°F	
2	@		°F				@	°F	
3	@		°F				@	°F	

Remarks:

All interpretations are opinions based on inferences from electrical or other measurements and we cannot, and do not, guarantee the accuracy or correctness of any interpretations, and we shall not, except in the case of gross or willful negligence on our part, be liable or responsible for any loss, costs, damages or expenses incurred or sustained by anyone resulting from any interpretation made by any of our officers, agents or employees. These interpretations are also subject to Clause 7 of our General Terms and Conditions as set out in our current Price Schedule.



COMPANY SHELL DEVELOPMENT PTY. LTD. Rm _____ @ _____ °F SCHL. FR 3838
 WELL HAWKESDALE #1 BHT _____ °F SCHL. TD 3839
 FIELD WILDCAT OTWAY BASIN DRLR TD 3860
 COUNTY AUSTRALIA STATE VICTORIA Elev: _____
 KB _____
 DF _____
 GL _____