

DEPT. INT. RES. & ENV.  
PE604448

COUNTY AUSTRALIA  
FIELD WILDCAT  
WELL HAWKESDALE #1

COMPANY SHELL DEVELOPMENT PTY. LTD.  
W.C.R. Encl. 4a

COMPANY SHELL  
COUNTY AUSTRALIA STATE VICTORIA  
FIELD WILDCAT OTWAY BASIN

LOCATION LONGITUDE 142° 17' 57" E  
LATITUDE 38° 04' 51" S  
Elev. 0  
Log Measured From RT 13 FT ABOVE GL  
Dilling Measured From RT 13 FT ABOVE GL

Permanent Datum: HSL  
Elev. 0  
Log Measured From: RT 13 FT ABOVE PERM. DATUM  
Dilling Measured From: RT 13 FT ABOVE GL

Other Services:  
FDCB, BHCOR,  
CDM, CST, CIS

Date 13 DEC 69 28 DEC 69

Run No. 1 2

Depth-Driller 3539 5820  
3538 5811  
3537 5810

Btm. Log Interval 1222 3600  
1221 @ 957/8 1221 @ 957/8

Top Log Interval 1222 3600

Casing-Driller 1222 1222

Casing-Logger 1222 1222

Bit Size 8 3/4 8 3/4

Type Fluid in Hole FRESHWATER FRESHWATER  
0 BROXINE 0 BROXINE & 6% DIESEL OIL

Dens. Visc. 9.3 40  
ph Fluid Loss 14 9.3 ml

Source of Sample FLOWLINE FLOWLINE

R<sub>nl</sub> @ Meas. Temp. @ °F @ °F  
R<sub>ml</sub> @ Meas. Temp. @ °F @ °F

Source: R<sub>nl</sub> R<sub>mc</sub> @ °F @ °F  
R<sub>nl</sub> @ BHT @ °F @ °F  
R<sub>ml</sub> @ BHT @ °F @ °F

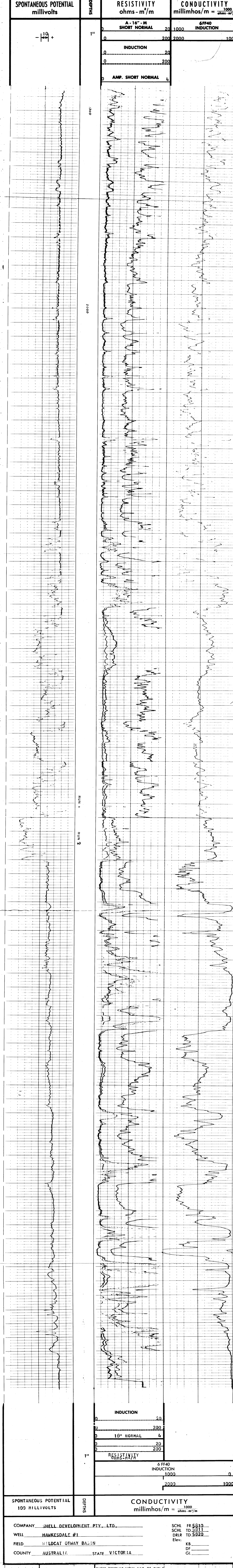
Run No.: 1 2  
CD: 1 1/2"  
S.O.: 1 1/2"  
Equip. PANEL No.: IRP-F 777 IRP-F 777  
Used: CART. No.:  
SONDE No.: IRS-M374 IRS-M 374  
IAP No.: HMP-B 210  
S.B.R.: 1

Time Since Circ. 3 HRS 3 HRS  
Max Rec. Temp. 136°F 163°F  
Equip. Location 4522 SAL 4522 SAL  
Recorded by KERVELLA & AEFLECK  
Witnessed by VEEMENA & POLL

REMARKS RUN 1 MUD WAS CONDITIONED PRIOR TO LOGGING, RUN 2 BHT 163 6 HRS AFTER END OF CIRCULATION

Changes in Mud Type or Additional Samples		Scale Changes	
Date	Sample No.	Type Log	Scale Up Hole
	12-12		Scale Down Hole
Type Fluid in Hole FRESHWATER			
Dens. Visc. 9.3 40			
ph Fluid Loss 14 9.3 ml			
Source of Sample FLOWLINE FLOWLINE			
R <sub>nl</sub> @ Meas. Temp.	@ °F	Run No.	Tool Type
R <sub>ml</sub> @ Meas. Temp.	@ °F	1	IRT-F
Source: R <sub>nl</sub> R <sub>mc</sub>	@ °F	2	6FF40
R <sub>nl</sub> @ BHT	@ °F		STD
R <sub>ml</sub> @ BHT	@ °F		
R <sub>mc</sub> @ BHT	@ °F		

Check one, filling in blanks where applicable:  
 Surface determined sonde errors used for 6FF40.  
 6FF40 sonde error corrected for \_\_\_\_\_ inch  
 borehole signal at Rm = \_\_\_\_\_  
 6FF40 zero set in hole at depth of \_\_\_\_\_ feet.



COMPANY SHELL DEVELOPMENT PTY. LTD. SCHL FR 5810  
WELL HAWKESDALE #1 SCHL TD 5811  
FIELD WILDCAT OTWAY BASIN DRLR TD 5820  
COUNTY AUSTRALIA STATE VICTORIA Elev: KB  
DF  
GL