

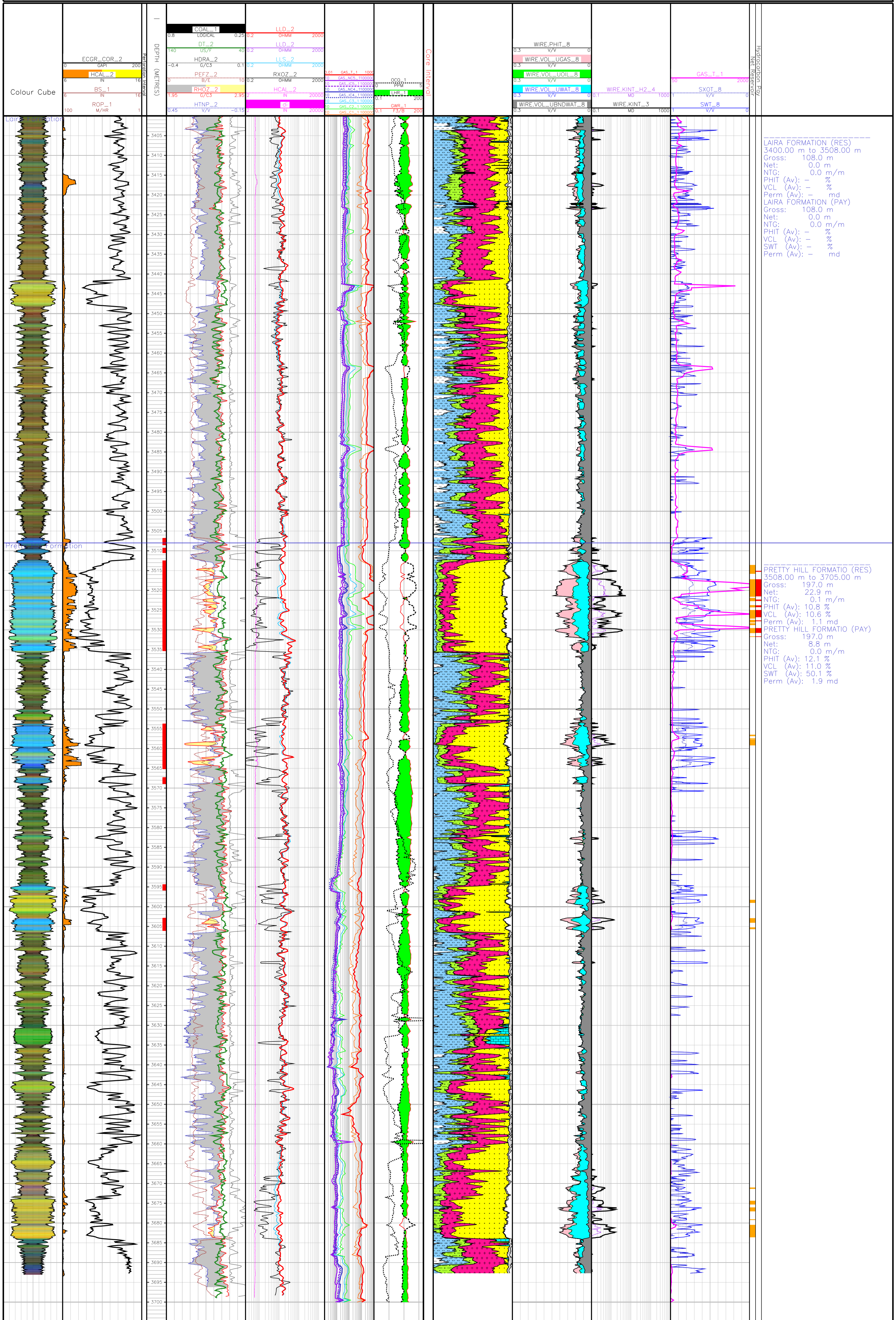
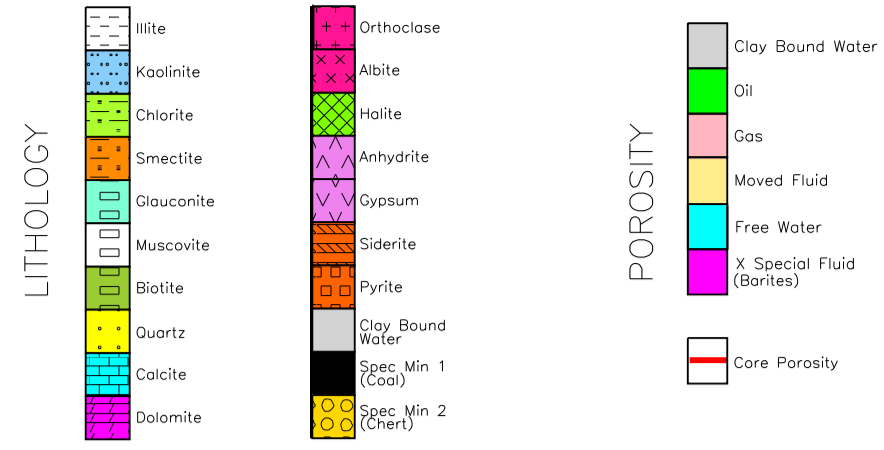


# Petrophysical Analysis of: GLENAIRE-1ST1

COMPANY: Beach Petroleum Ltd, Santos Ltd  
 LOCATION: PEP 160  
 LATITUDE: 37 34' 47.03 S  
 LONGITUDE: 140 59' 52.25 E  
 X COORDINATE: -  
 Y COORDINATE: -  
 HORIZONTAL UNITS: METRES  
 DATE PLOTTED: 03-May-2007

DATUM FOR ELEVATION: AHD  
 WATER DEPTH: -  
 MEASUREMENT REF.: Rotary Table  
 ELEVATION MEAS. REF.: 76.10  
 DRILLED DEPTH: 3700.00  
 VERTICAL UNITS: METRES  
 DATE LOGGED: 26-Oct-2006  
 VERTICAL SCALE: 1:500

Bit Size: 6 in  
 Mud Type: KCl-PPHA  
 DFD: 11.0243  
 BHT: 133 C  
 Rm: 0.054 @ 14,800C  
 Rrf: 0.047 @ 14,800C  
 Rrc: 0.068 @ 14,800C  
 KCl: 8%



LAIRA FORMATION (RES)  
 3400.00 m to 3508.00 m  
 Gross: 108.0 m  
 Net: 0.0 m  
 NTG: 0.0 m/m  
 PHIT (Av): - %  
 VCL (Av): - %  
 Perm (Av): - md  
 LAIRA FORMATION (PAY)  
 Gross: 108.0 m  
 Net: 0.0 m  
 NTG: 0.0 m/m  
 PHIT (Av): - %  
 VCL (Av): - %  
 SWT (Av): - %  
 Perm (Av): - md

PRETTY HILL FORMATIO (RES)  
 3508.00 m to 3705.00 m  
 Gross: 197.0 m  
 Net: 22.9 m  
 NTG: 0.1 m/m  
 PHIT (Av): 10.8 %  
 VCL (Av): 10.6 %  
 Perm (Av): 1.1 md  
 PRETTY HILL FORMATIO (PAY)  
 Gross: 197.0 m  
 Net: 8.8 m  
 NTG: 0.0 m/m  
 PHIT (Av): 12.1 %  
 VCL (Av): 11.0 %  
 SWT (Av): 50.1 %  
 Perm (Av): 1.9 md