



Petrophysical Analysis of: GLENAIRE-1ST1

COMPANY: Beach Petroleum Ltd Santos Ltd
 LOCATION: PEP 160
 LATITUDE: 37 34' 43.03 S
 LONGITUDE: 140 56' 52.25 E
 X COORDINATE: -
 Y COORDINATE: -
 HORIZONTAL UNITS: METRES
 DATE PLOTTED: 22-Feb-2007

DATUM FOR ELEVATION: AHD
 WATER DEPTH: -
 MEASUREMENT REF: Rotary Table
 ELEVATION MEAS. REF: 76.10
 DRILLED DEPTH: 3700.00
 VERTICAL UNITS: METRES
 DATE LOGGED: 26-Oct-2006
 VERTICAL SCALE: 1:200

Well: GLENAIRE-1ST1
 Mud Type: MUD-DMHA
 DFD: 11-0243
 BHT: 133 C

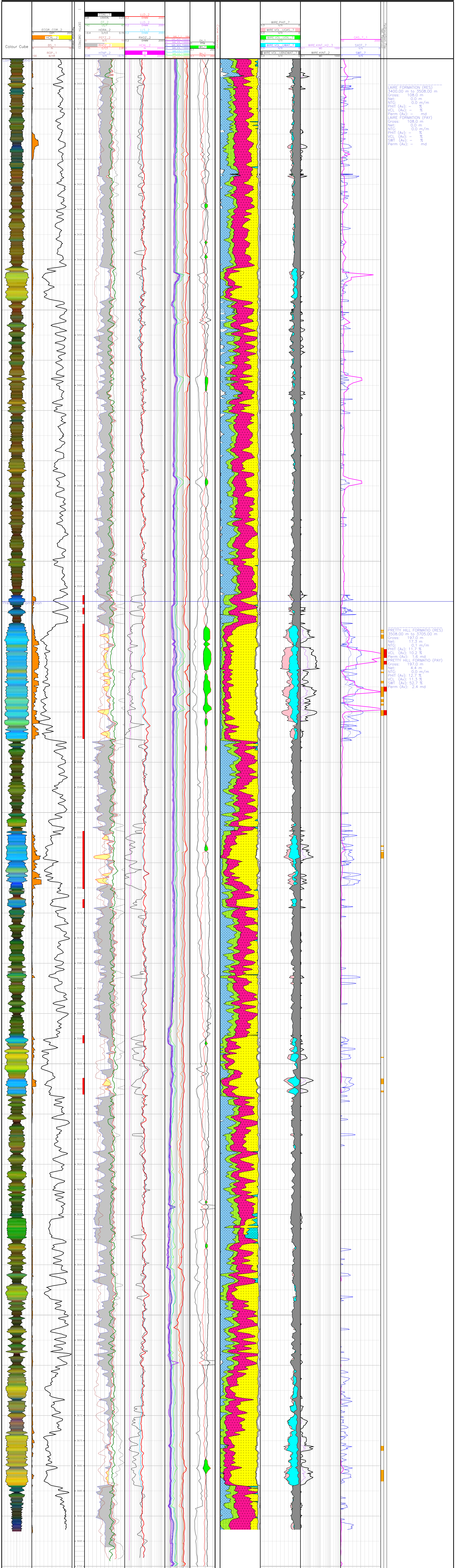
Rm: 0.054 @ 14.800C
 Rm: 0.047 @ 14.800C
 Rm: 0.068 @ 14.800C
 KCI: 8%

LITHOLOGY

- Shale
- Claystone
- Sandstone
- Siltstone
- Mudstone
- Calcite
- Quartz
- Gypsum
- Sulphide
- Other

POROSITY

- City Bound Water
- Oil
- Gas
- Mixed Fluid
- Free Water
- % Sorpt Fluid (Water)
- Cone Porosity



LAIRE FORMATION (RES)
 3400.00 m to 3508.00 m
 Gross: 108.0 m
 Net: 0.0 m
 NIG: -
 PHIT (Av): -
 VCL (Av): -
 Perm (Av): - md

PRETTY HILL FORMATIO (RES)
 3508.00 m to 3705.00 m
 Gross: 197.0 m
 Net: 11.3 m
 NIG: 0.1 m/m
 PHIT (Av): 11.7 %
 VCL (Av): 10.2 %
 Perm (Av): 1.6 md

PRETTY HILL FORMATIO (PAY)
 Gross: 197.0 m
 Net: 4.4 m
 NIG: 0.0 m/m
 PHIT (Av): 12.7 %
 VCL (Av): 11.3 %
 SWT (Av): 52.7 %
 Perm (Av): 2.4 md