



GEOGRAM*

(Synthetic Seismogram)

Company: BEACH PETROLEUM NL
A Subsidiary of Schlumberger

Well: WRIXONDALE #1
Field: WILD CAT
Country: AUSTRALIA
Reference No: 54021
Date Logged: 19/10/85
Date Processed: 29/10/85
Interval: 0.00 to 987.00
Location: 037 59 42.8' S 142 29' 48.1' E
Elevations: KB: 282 M DP: 280 M GL: 222 M
Permanent Datum: MSL
Depth Units: METRES

LOG INFORMATION

FIELD RECORD: Operator: E. ASTALDIAN Location: GFA Program Version: 24.4 84/02/08
COMPARISON: Analyst: M. SAINSBY Centre: A.S.J. Number: 142
Logging Datum: ELEVATION ABOVE MEAN SEA LEVEL
Seismic Reference Datum: MSL
Ground Level: 222 M
Sonic Calibration By Check Spots: YES Sonic Edited By Analyst: YES
Two-Way Time Sample Interval: 2 ms Environment: onshore

True Vertical Depth Corrections Applied: NO
Source of True Vertical Depth Data: Maximum Hole Deviation:

Run	Date	Type	Bit Size	Depth	Casing Size	Top Depth	Bottom Depth
1	19/10/85	ELS	8 5/8" Ø 302 M	8 1/2" Ø 897 M	288 M	897 M	

Equal time slice model of horizontal plane layers.
Plane acoustic waves at normal incidence.
No intrinsic attenuation.

POLARITY
An upgoing wave, reflected by an increase in acoustic impedance with depth, is displayed as a white trough under normal polarity.

SIGNATURES
All signatures displayed in the Geogram results correspond to a wavelet computed with a reflection coefficient of -0.5 (a decrease in acoustic impedance with depth).

Sonic log interval 300 - 987 metres below KB
Density log interval 300 - 987 metres below KB
True Scale = 75 m/sec

The well name, location and borehole reference data were furnished by the customer.

All interpretations are opinions based on inferences from electrical or other measurements and we cannot, and do not guarantee the accuracy or correctness of any interpretations, and we shall not, except in the case of gross or willful negligence on our part, be liable or responsible for any damages or expenses incurred or sustained by anyone resulting from any interpretation made by any of our officers, agents or employees. These interpretations are also subject to Clause 4 of our General Terms and Conditions as set out in our current Price Schedule.

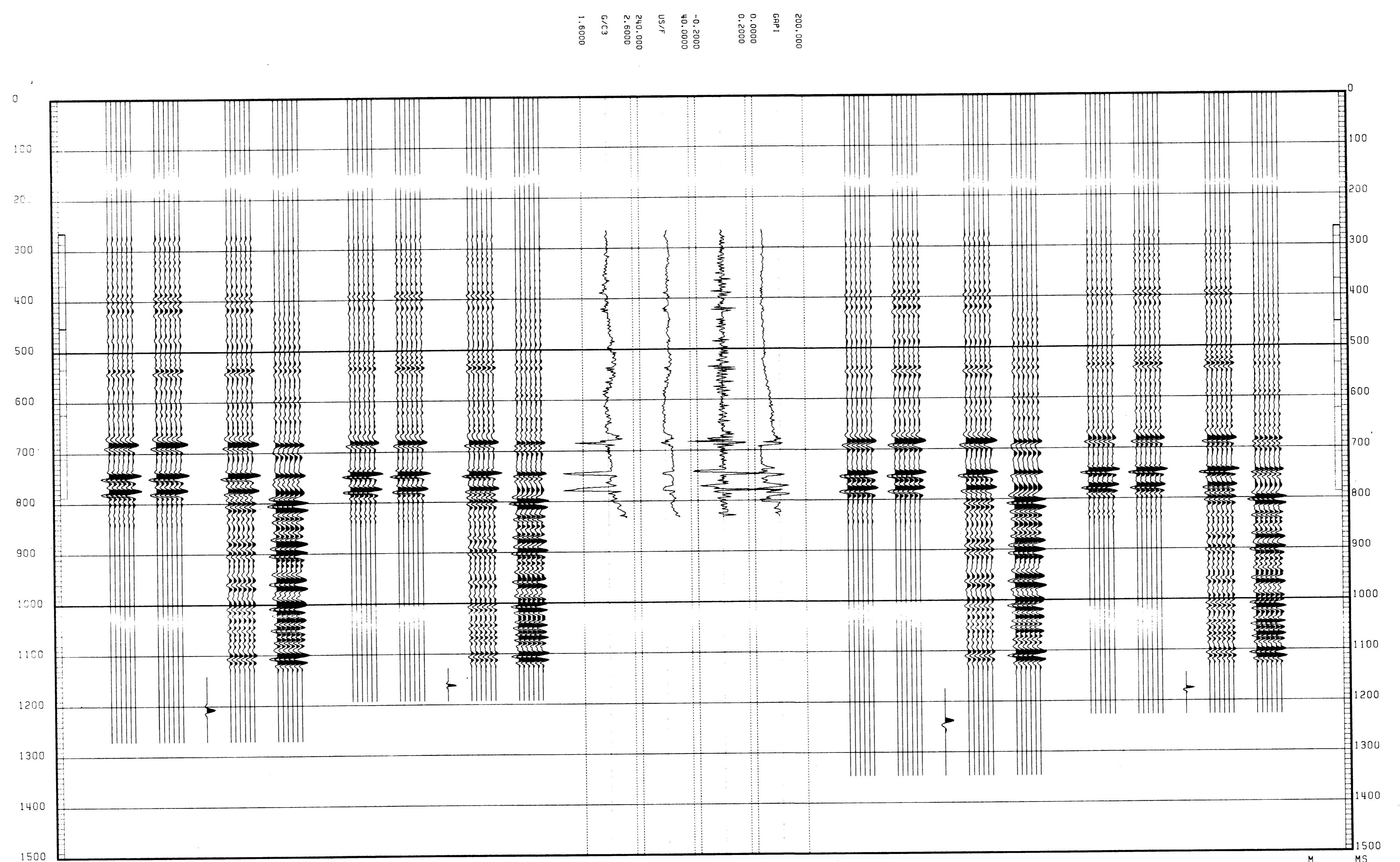
CLIENT : BEACH PETROLEUM N.L.
FIELD : WILD CAT
WELL : WRIXONDALE - 1

RHDT DTMM REFLL GR

GEOGRAM FROM WST WRIXONDALE #1 NORMAL POLARITY

BUTTERWORTH FILTER:
0 - 0.5 SECS : 22,28 - 95,105 HZ
0.5 - 1.0 SECS : 18,24 - 95,105 HZ
1.0 - 3.0 SECS : 18,24 - 95,105 HZ

- MULTIFILES ONLY 100 HZ MINIMUM PHASE RICKER * BUTTERWORTH FILTER
- PRIMARIES AND MULTIFILES 100 HZ MINIMUM PHASE RICKER * BUTTERWORTH FILTER
- STONTOUR BEFORE BUTTERWORTH FILTER
- PRIMARIES WITH TRANSMISSION LOSS 100 HZ MINIMUM PHASE RICKER * BUTTERWORTH FILTER
- PRIMARIES 100 HZ MINIMUM PHASE RICKER * BUTTERWORTH FILTER
- MULTIFILES ONLY 50 HZ MINIMUM PHASE RICKER * BUTTERWORTH FILTER
- PRIMARIES AND MULTIFILES 50 HZ ZERO PHASE RICKER * BUTTERWORTH FILTER
- STONTOUR BEFORE BUTTERWORTH FILTER
- PRIMARIES WITH TRANSMISSION LOSS 50 HZ ZERO PHASE RICKER * BUTTERWORTH FILTER
- PRIMARIES 50 HZ ZERO PHASE RICKER * BUTTERWORTH FILTER



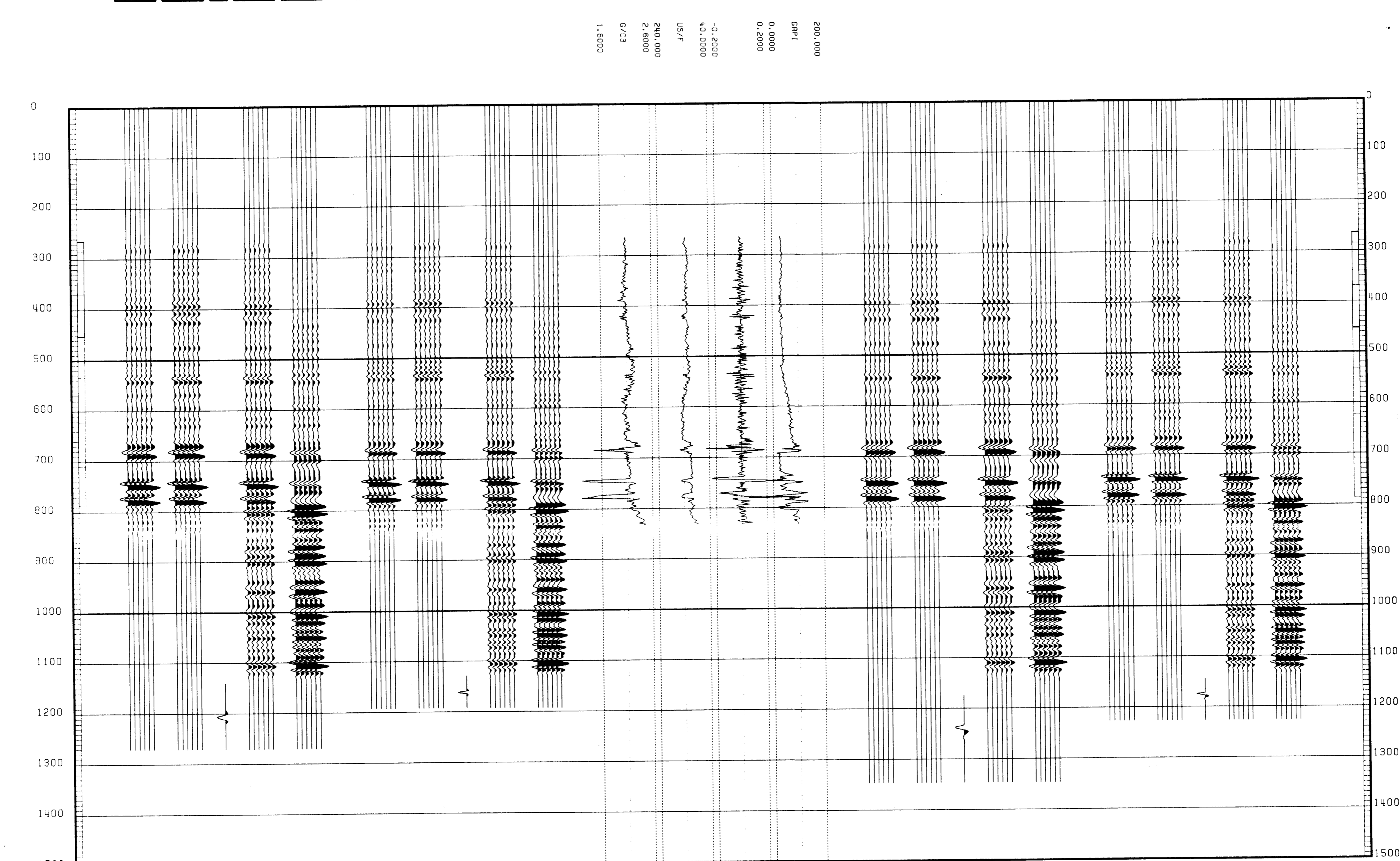
CLIENT : BEACH PETROLEUM N.L.
FIELD : WILD CAT
WELL : WRIXONDALE - 1

RHDT DTMM REFLL GR

GEOGRAM FROM WST WRIXONDALE #1 REVERSE POLARITY

BUTTERWORTH FILTER:
0 - 0.5 SECS : 22,28 - 95,105 HZ
0.5 - 1.0 SECS : 18,24 - 95,105 HZ
1.0 - 3.0 SECS : 18,24 - 95,105 HZ

- MULTIFILES ONLY 100 HZ MINIMUM PHASE RICKER * BUTTERWORTH FILTER
- PRIMARIES AND MULTIFILES 100 HZ MINIMUM PHASE RICKER * BUTTERWORTH FILTER
- STONTOUR BEFORE BUTTERWORTH FILTER
- PRIMARIES WITH TRANSMISSION LOSS 100 HZ MINIMUM PHASE RICKER * BUTTERWORTH FILTER
- PRIMARIES 100 HZ MINIMUM PHASE RICKER * BUTTERWORTH FILTER
- MULTIFILES ONLY 50 HZ MINIMUM PHASE RICKER * BUTTERWORTH FILTER
- PRIMARIES AND MULTIFILES 50 HZ MINIMUM PHASE RICKER * BUTTERWORTH FILTER
- STONTOUR BEFORE BUTTERWORTH FILTER
- PRIMARIES WITH TRANSMISSION LOSS 50 HZ MINIMUM PHASE RICKER * BUTTERWORTH FILTER
- PRIMARIES 50 HZ MINIMUM PHASE RICKER * BUTTERWORTH FILTER



CLIENT : BEACH PETROLEUM N.L.
FIELD : WILD CAT
WELL : WRIXONDALE #1
COUNTRY : AUSTRALIA

