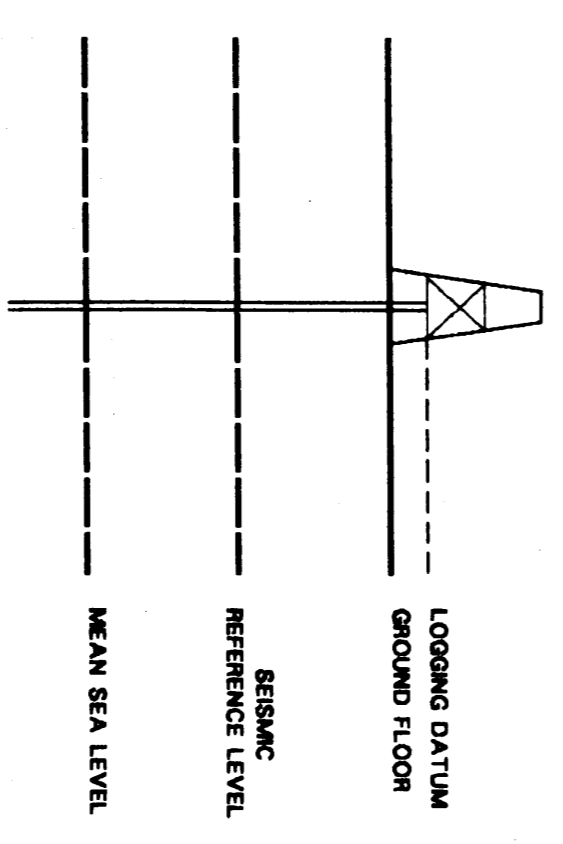


SEISMIC CALIBRATION LOG

(Adjusted Continuous Velocity Log)

Company: BEACH PETROLEUM N.L.
 Well: WRIXONDALE #1
 Field: WILDCAT
 Country: AUSTRALIA
 Reference No: 5A0421 Interval: 000 to 987.00
 Date Logged: 19/10/85 Date Processed: 29/10/85
 Location: 037 59' 42.8" S 147 29' 48.1" E
 Elevations: KB: 26.2 M DF: 26.0 M GL: 22.2 M
 Permanent Datum: MSL Depth Units: METRES
 FIELD RECORDING: Engineer: E. ASTRACHIAN Location: OEA Program Version: 26.4 86/02/08
 COMPUTATION: Analyst: M. SANDERS Centre: ASJ Baseline: 14.2
 ELEVATION ABOVE MEAN SEA LEVEL
 Logging Datum: 26.2 M
 Seismic Reference Datum: MSL
 Ground Level: 22.2 M



Total No. of Check Levels: 15 (from 185 to 965 m below KB)
 Velocity Log Depth Reference: SRD
 Velocity Log Time Reference: SRD

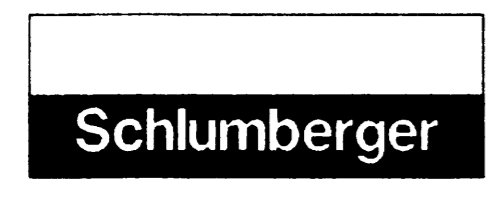
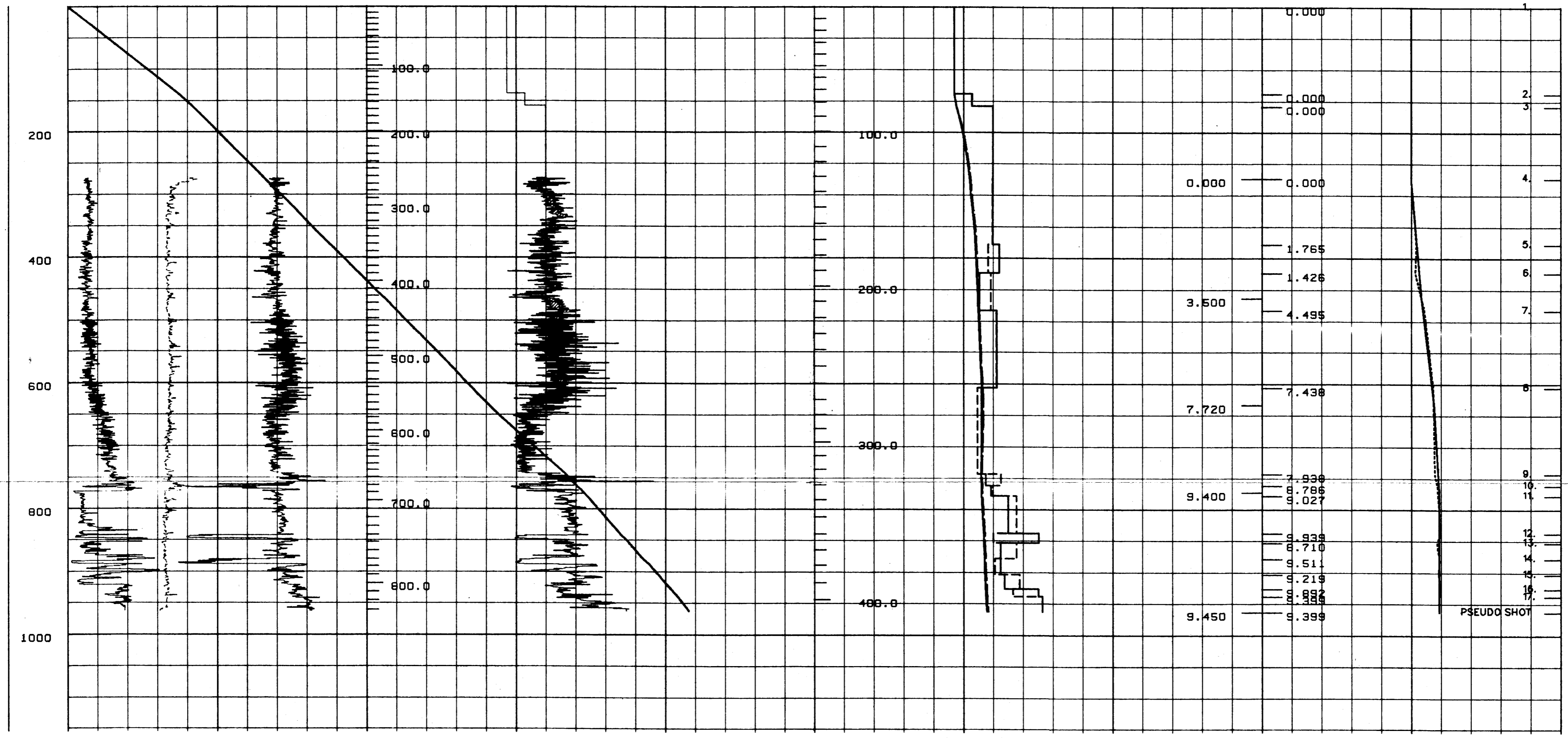
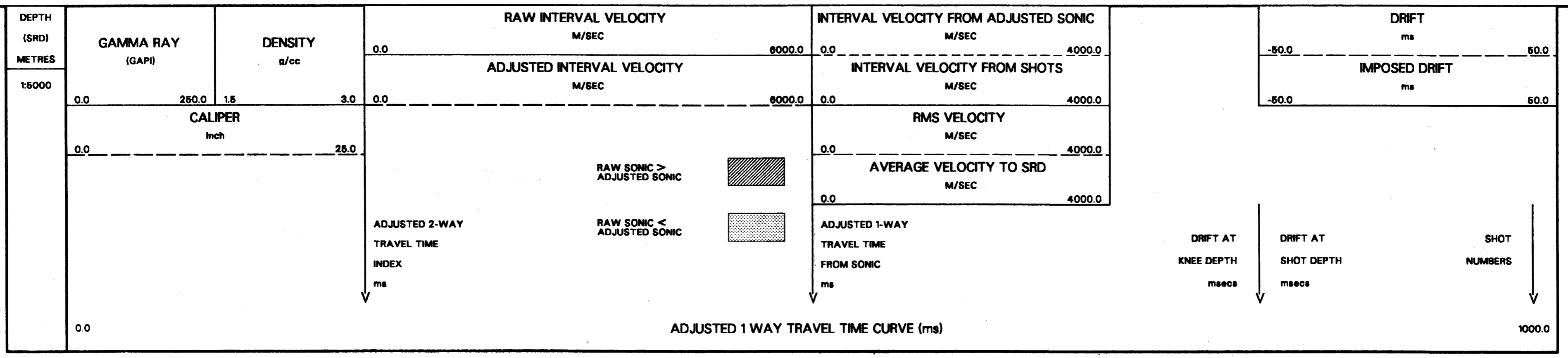
Run	Date	Tool Type	Bit Size/Depth	Casing Size/Depth	Top Depth	Bottom Depth
1	18/10/85	SLS	9 5/8" @ 302 M	8 1/2" @ 987 M	288 M	987 M

REMARKS
 Sonic log interval 300 - 987 metres below KB
 Density log interval 300 - 987 metres below KB
 Bottom shot @ 965 M below KB, drift extrapolated to TD
 Imposed shot at SRD and top of sonic (300 metres below KB)

FOLD HERE

The well name, location and borehole reference data were furnished by the customer.

All interpretations are opinions based on inferences from electrical or other measurements and we cannot, and do not guarantee the accuracy or correctness of any interpretations, and we shall not, except in the case of gross or willful negligence on our part, be liable or responsible for any loss, costs, damages or expenses incurred or sustained by anyone resulting from any interpretations made by any of our officers, agents or employees. These interpretations are also subject to Clause 4 of our General Terms and Conditions as set out in our current Price Schedule.



COMPANY BEACH PETROLEUM N.L.
 FIELD WILDCAT
 WELL WRIXONDALE #1
 COUNTRY AUSTRALIA