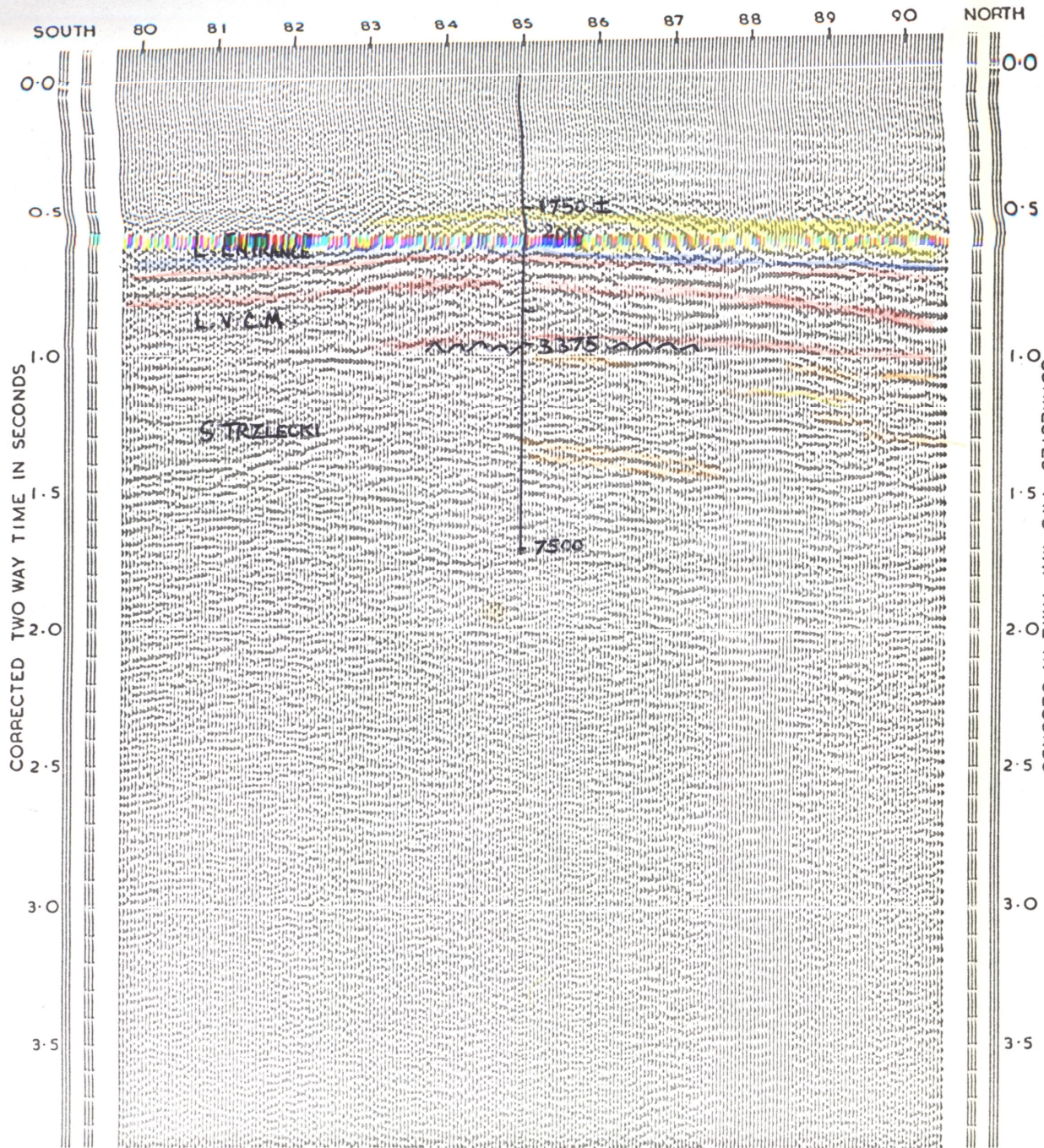



WOODSIDE SOUTH-1  
LINE V15



SEISMOGRAPH SERVICE LIMITED			
LONDON ENGLAND			
VARIABLE AREA CROSS-SECTION VIBROSEIS FOR WOODSIDE (LAKES ENTRANCE) OIL CO. N.L.			
PAYNESVILLE SURVEY			
LINE V15		V. P. 80-90	
VELOCITY DISTRIBUTION		•	
WEATHERING VELOCITY (Vw)		-	
HORIZONTAL VELOCITY (Vh)		-	
ELEVATION VELOCITY (Ve)		5300 F/SEC.	
WEATHERING METHOD		-	
HORIZONTAL SCALE 1" : 2700'		DATUM: M. S. L.	
TYPE OF PROFILING		10-FOLD C. D. P.	
TRACE INTERVAL		150'	
OFFSET DISTANCE		1575'-4425'	
No. AND TYPE OF VIBRATORS		3	
SWEEP FREQUENCY 14-57		No. OF SWEEPS 10	
PLAYBACK FILTER		OUT-60	
MIXING		-	
VIBRATOR PATTERN: 450' IN LINE			
DEPT. NAT. RES & ENV  PE902942			
GEOPHONE PATTERN: 40 GEOPHONES SPACED OVER 450' ALONG THE LINE			
PARTY	278	DATE	23-3-1965
ENCLOSURE	No. 4	REPORT	F. P. R. 2

• VEL. FN. WELLINGTON PARK No. 1