

COMPOSITE WELL LOG WOODSIDE OIL N.L. SEACOMBE SOUTH No 1



PETROLEUM TENEMENT: P.E.P. 72

STATE: VICTORIA

Basin: GIPPSLAND

FOUR-MILE SHEET: SALE

WELL STATUS: PLUGGED & ABANDONED

LOCATION
 LATITUDE: 38° 08' 29.30" S
 LONGITUDE: 147° 29' 06.70" E
 DATUM: Australian Geodetic

ELEVATION
 GROUND LEVEL: -6.07 feet
 ROTARY TABLE: 5.78 feet
 KELLY: BUSHING 6.26 feet (Well datum)
 DATUM: WILLIAMSTOWN

CASING AND CEMENTING DETAILS

SIZE	WEIGHT	GRADE	SETTING DEPTH	CEMENT (socks)
20"			50'	100
13 3/8"	4.8	H-40	140'	180
9 5/8"	3.6	J-55	1236'	310

HOLE SIZES

26" to 50'
 17 1/2" to 150'
 12 1/4" to 1250'
 8 3/4" to 3890'

Date	INDUCTION ELECTRICAL LOG		SONIC GAMMA RAY LOG		COMPENSATED FORMATION DENSITY	
	11-11-1970	11-11-1970	11-11-1970	11-11-1970	11-11-1970	11-11-1970
Run No.	ONE	ONE	ONE	ONE	ONE	ONE
Depth-Driller	3890	3890	3890	3890	3890	3890
Depth-Logger	3890	3890	3890	3890	3890	3890
Blm. Log Interval	1245	1245	1245	1245	1245	1245
Top Log Interval	1236 @ 9 3/8"	1236 @ 9 3/8"	1236 @ 9 3/8"	1236 @ 9 3/8"	1236 @ 9 3/8"	1236 @ 9 3/8"
Casing-Driller	1236	1245	1236	1236	1236	1236
Casing-Logger	1236	1245	1236	1236	1236	1236
Bit Size	8 3/4"	8 3/4"	8 3/4"	8 3/4"	8 3/4"	8 3/4"
Type Fluid in Hole	FRESHWATER SALTWELL	FRESHWATER SALTWELL	FRESHWATER SALTWELL	FRESHWATER SALTWELL	FRESHWATER SALTWELL	FRESHWATER SALTWELL
Dens. Visc.	9.5 50	9.5 50	9.5 50	9.5 50	9.5 50	9.5 50
pH Fluid Loss	8.5 10 ml	8.5 10 ml	8.5 10 ml	8.5 10 ml	8.5 10 ml	8.5 10 ml
Source of Sample	FLOWLINE	FLOWLINE	FLOWLINE	FLOWLINE	FLOWLINE	FLOWLINE
Ra @ Meas. Temp.	.161 @ 70°F	.161 @ 70°F	.161 @ 70°F	.161 @ 70°F	.161 @ 70°F	.161 @ 70°F
Rm @ Meas. Temp.	.110 @ 70°F	.110 @ 70°F	.110 @ 70°F	.110 @ 70°F	.110 @ 70°F	.110 @ 70°F
Rc @ Meas. Temp.	.201 @ 70°F	.201 @ 70°F	.201 @ 70°F	.201 @ 70°F	.201 @ 70°F	.201 @ 70°F
Source, Bat. No.	PRESS PRESS	PRESS PRESS	PRESS PRESS	PRESS PRESS	PRESS PRESS	PRESS PRESS
Time Since Circ.	4.32	4.32	4.32	4.32	4.32	4.32
Max. Rec. Temp.	145°F	145°F	145°F	145°F	145°F	145°F
Equip. Location	4522 T. S. A. A. ROBERTS	4522 T. S. A. A. ROBERTS	4522 T. S. A. A. ROBERTS	4522 T. S. A. A. ROBERTS	4522 T. S. A. A. ROBERTS	4522 T. S. A. A. ROBERTS
Recorded By	A. ROBERTS	A. ROBERTS	A. ROBERTS	A. ROBERTS	A. ROBERTS	A. ROBERTS
Witnessed By	P. BOLLEN	P. BOLLEN	P. BOLLEN	P. BOLLEN	P. BOLLEN	P. BOLLEN

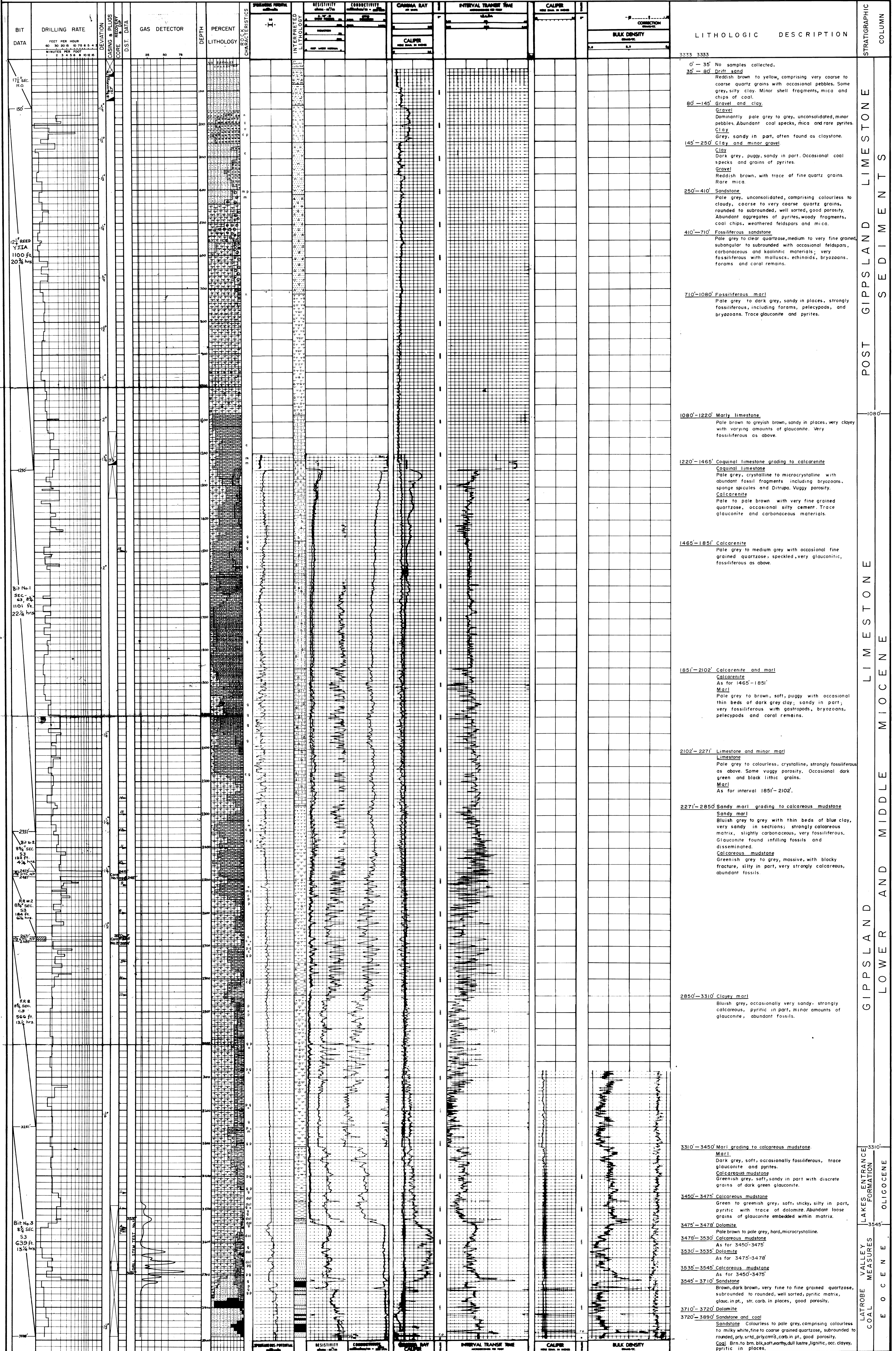
DRILLED BY: Woodside Oil N.L. (Crew supplied by Richter Bowden Drilling P.L.)
 DRILLING METHOD: Rotary
 LOGGED BY: Schlumberger SEACO Inc.
 DRILL-STEM TESTED BY: Halliburton Ltd.
 CEMENTED BY: Halliburton Ltd.
 MUD LOGGING: Data Analysis P.L.
 LITHOLOGY BY: C. Patterson, A. Marimuthu.

LITHOLOGIC REFERENCE

	Sandstone		Calcarene (Granstone)	m	Micaceous
	Siltstone		Clayey calcarenite (Packstone)	g	Glauconitic
	Clay		Dolomite	d	Pyritic
	Mudstone		Marl	c	Carbonaceous
	Coal		Feldspathic	dol	Dolomitic
	Limestone		Calcareous	f	Fossiliferous

ABANDONMENT PLUGS: 3690'-3490', 1336'-1136', 50'-0'

WELL SYMBOLS
 ▸ Sideload core, number, recovered.
 ▴ Casing shoe.
 X Plugged interval.



LITHOLOGIC DESCRIPTION

3273-3333
 0' - 35' No samples collected.
 35' - 80' Drift sand
 Reddish brown to yellow, comprising very coarse to coarse quartz grains with occasional pebbles. Some grey, silty clay. Minor shell fragments, mica and chips of coal.
 80' - 145' Gravel and clay.
 Gravel
 Dominantly pale grey to grey, unconsolidated, minor pebbles. Abundant coal specks, mica and rare pyrites.
 Clay
 Grey, sandy in part, often found as claystone.
 145' - 250' Clay and minor gravel.
 Clay
 Dark grey, puggy, sandy in part. Occasional coal specks and grains of pyrites.
 Gravel
 Reddish brown, with trace of fine quartz grains. Rare mica.
 250' - 410' Sandstone
 Pale grey, unconsolidated, comprising colourless to clauy, coarse to very coarse quartz grains, rounded to subrounded, well sorted, good porosity. Abundant aggregates of pyrites, woody fragments, coal chips, weathered feldspars and mica.
 410' - 710' Fossiliferous sandstone
 Pale grey to clear quartzose, medium to very fine grained, subangular to subrounded with occasional feldspars, carbonaceous and kaolinitic materials; very fossiliferous with molluscs, echinoids, bryozoans, forams and coral remains.
 710' - 1080' Fossiliferous marl
 Pale grey to dark grey, sandy in places, strongly fossiliferous, including forams, pelecypods, and bryozoans. Trace glauconite and pyrites.
 1080' - 1220' Marly limestone
 Pale brown to greyish brown, sandy in places, very clayey with varying amounts of glauconite. Very fossiliferous as above.
 1220' - 1465' Coquina limestone grading to calcarenite
 Coquina limestone
 Pale grey, crystalline to microcrystalline with abundant fossil fragments including bryozoans, sponge spicules and Ditrupa. Vuggy porosity.
 Calcarenite
 Pale to pale brown with very fine grained quartzose, occasional silty cement. Trace glauconite and carbonaceous materials.
 1465' - 1851' Calcarenite
 Pale grey to medium grey with occasional fine grained quartzose, speckled, very glauconitic, fossiliferous as above.
 1851' - 2102' Calcarenite and marl
 Calcarenite
 As for 1465' - 1851'
 Marl
 Pale grey to brown, soft, puggy with occasional thin beds of dark grey clay, sandy in part; very fossiliferous with gastropods, bryozoans, pelecypods and coral remains.
 2102' - 2271' Limestone and minor marl
 Limestone
 Pale grey to colourless, crystalline, strongly fossiliferous as above. Some vuggy porosity. Occasional dark green and black lithic grains.
 Marl
 As for interval 1851' - 2102'.
 2271' - 2850' Sandy marl grading to calcareous mudstone
 Sandy marl
 Bluish grey to grey with thin beds of blue clay, very sandy in sections; strongly calcareous matrix, slightly carbonaceous, very fossiliferous. Glauconite found infilling fissures and disseminated.
 Calcareous mudstone
 Greenish grey to grey, massive, with blocky fracture, silty in part, very strongly calcareous, abundant fossils.
 2850' - 3310' Clayey marl
 Bluish grey, occasionally very sandy, strongly calcareous, pyritic in part, minor amounts of glauconite, abundant fossils.
 3310' - 3450' Marl grading to calcareous mudstone
 Marl
 Dark grey, soft, occasionally fossiliferous, trace glauconite and pyrites.
 Calcareous mudstone
 Greenish grey, soft, sandy in part with discrete grains of dark green glauconite.
 3450' - 3475' Calcareous mudstone
 Green to greenish grey, soft, sticky, silty in part, pyritic with trace of dolomite. Abundant loose grains of glauconite embedded within matrix.
 3475' - 3478' Dolomite
 Pale brown to pale grey, hard, microcrystalline.
 3478' - 3530' Calcareous mudstone
 As for 3450' - 3475'.
 3530' - 3535' Dolomite
 As for 3475' - 3478'.
 3535' - 3545' Calcareous mudstone
 As for 3450' - 3475'.
 3545' - 3710' Sandstone
 Brown, dark brown, very fine to fine grained quartzose, subrounded to rounded, well sorted, pyritic matrix, glauc. in pt., str. carb. in places, good porosity.
 3710' - 3720' Dolomite
 3720' - 3890' Sandstone and coal
 Sandstone
 Colourless to pale grey, comprising colourless to milky white, fine to coarse grained quartzose, subrounded to rounded, py. str. pyritic, carb. in pt., good porosity.
 Coal
 Brn. to blk. soft, earthy, dull lustr. lignitic, occ. clayey, pyritic in places.