

COMPANY : LAKES
RIG : DAVID HENRY BOURNE 2000
AREA : GIPPSLAND BASIN
COUNTRY : AUSTRALIA
LOCATION : LAKES ENTRANCE
ELEVATION : Air Gap 3.00 m (RT-MSL)
Water Depth m (MSL-SB)
DEPTH REF.: ROTARY TABLE

SPUD DATE : 01/03/1997
TD DATE : 06/03/1997
TD DRILLER : 425 m (425 m TVD)
TD WIRELINE : 425 m (425 m TVD)
LOGGED FROM : SURFACE @ 8 m
LOGGED TO : 425 @ 425 m
STATUS : PLUGGED AND ABANDONED

BIT SIZE	MOLE DEPTH	CASING SIZE	SHOE DEPTH
444.0	64	340.0	60
155.0	425		

LOGGING ENGINEERS
G. ROUSE
B. BARNICK

DEPTH SCALE
1: 500

SYMBOLS

NEW BIT RUN
NEW CORE BIT RUN
CASING SHOE
LINER HANGER
Recovered
Not Recovered
SIDEWALL CORES

CORED INTERVAL
WIRELINE LOGS RUN

NO SHOW
WEAK SHOW
FAIR SHOW
GOOD SHOW

ABBREVIATIONS

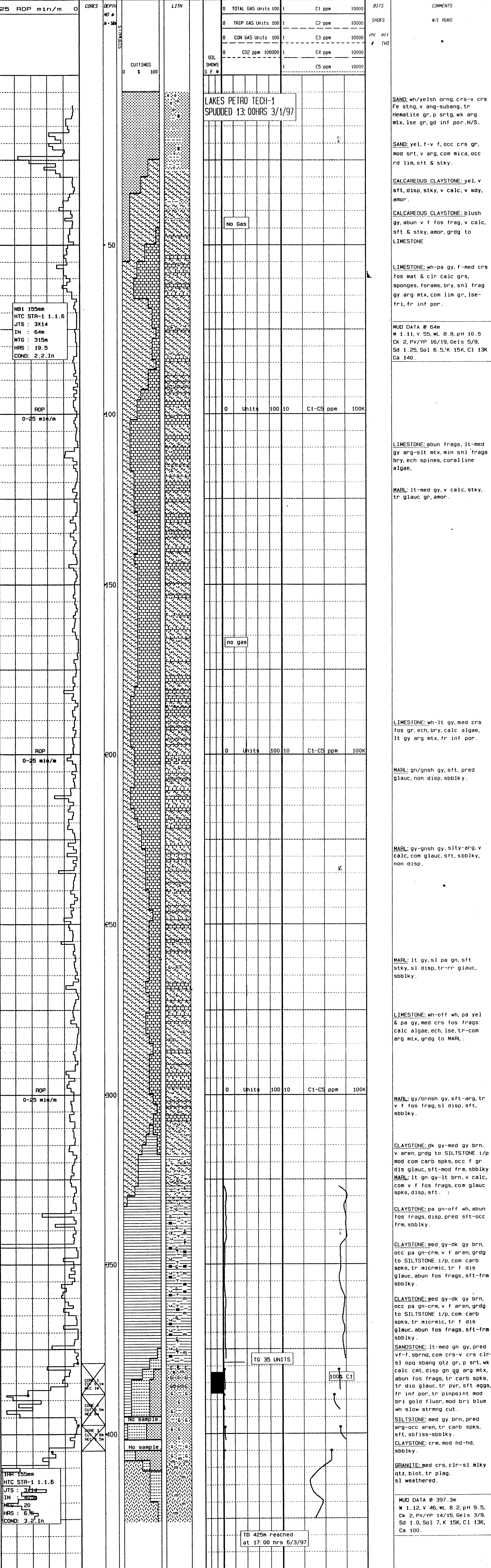
NB NEW BIT	DS DIRECTIONAL SURVEY
NCR NEW CORE BIT	WI WIPER TRIP
RRB RE-RUN BIT	PHM PULL OUT OF HOLE
CS CASING SHOE	RIM RUN IN TO HOLE
SNC SIDEWALL CORES	WOM WAIT ON WEATHER
EL ELECTRIC LOG	LAT LOGGED AFTER TRIP
WOB WEIGHT ON BIT	LWM LOST CIRCULATION MATERIAL
RRM REVS PER MINUTE	DC DEPTH CORRECTION
PP PUMP PRESSURE	OST ORILL STEW TEST
SPM STROKES PER MINUTE	HRG HEATING
CR CIRCULATED RETURNS	ML MUD LOSSES
PR POOR RETURNS	FR FLOW RATE
NR NO RETURNS	FC FLOW CHECK
TG TRIP GAS	GR BIT RUN
CG CONNECTION GAS	
WTG WIPER TRIP GAS	

MUD DATA

W WEIGHT	kg/m ³
MG MUD GRADIENT	psi/ft
V VISCOSITY	SFL
PV PLASTIC VISCOSITY	Pa.s
YP YIELD POINT	Pa
GEL GEL STRENGTH	Pa
pH ACIDITY	
F FILTRATE	cm ³ /30 min
CK CAME THICKNESS	mm
S SALLIQUET	kg-%
SO SAND CONTENT	%
O OIL CONTENT	%
WL WATER LOSS	cm ³ /30 min
SOL SOLIDS CONTENT	%
AF FILTRATE ALKALINITY	%
GYP GYPSUM CONTENT	kg/m ³

LEGEND

CLAY	CHALK	LIMESTONE	ANHYDRITE	ARGILLACEOUS	CALCAREOUS	DIATOMS
SLATE	CONGLOMERATE	CHALK	OTHER SALTS	SILTY	DOLOMITIC	PLANT REMAINS
SILT	BRACONIA	DOLOMITIC LIMESTONE	HALITE AND OTHER SALTS	SANDY	CARBONACEOUS	CONCRETIONS
SILTSTONE	MARL	CALCAREOUS LIMESTONE	COAL AND OTHER CARBONACEOUS ROCK	AMBIOSC	TUFFACEOUS	FOSFILLS
SAND	CHERT	DOLOMITE	CEMENT			FOSSILS
SANDSTONE						



0	100	10	C1-C5	100K
0	100	10	C1-C5	100K
0	100	10	C1-C5	100K
0	100	10	C1-C5	100K
0	100	10	C1-C5	100K

0	100	10	C1-C5	100K
0	100	10	C1-C5	100K
0	100	10	C1-C5	100K
0	100	10	C1-C5	100K
0	100	10	C1-C5	100K

COMMENTS

LAKES PETRO TECH-1
SPUDED 13:00HRS 3/1/97

No Gas

no gas

TG 35 UNITS

100% C1

TD 425m reached
at 17:00 hrs 6/3/97

MUD DATA @ 64m
W 1.11, V 55, WL 8.8, pH 10.5
CK 2, PV/YP 16/19, Ge1s 5/9,
Sd 1.25, Sol 6.5, K 15K, C1 13K
Ca 140.

MUD DATA @ 397.3m
W 1.12, V 46, WL 8.2, pH 9.5,
CK 2, PV/YP 14/15, Ge1s 3/9,
Sd 1.0, Sol 7, K 15K, C1 13K,
Ca 100.