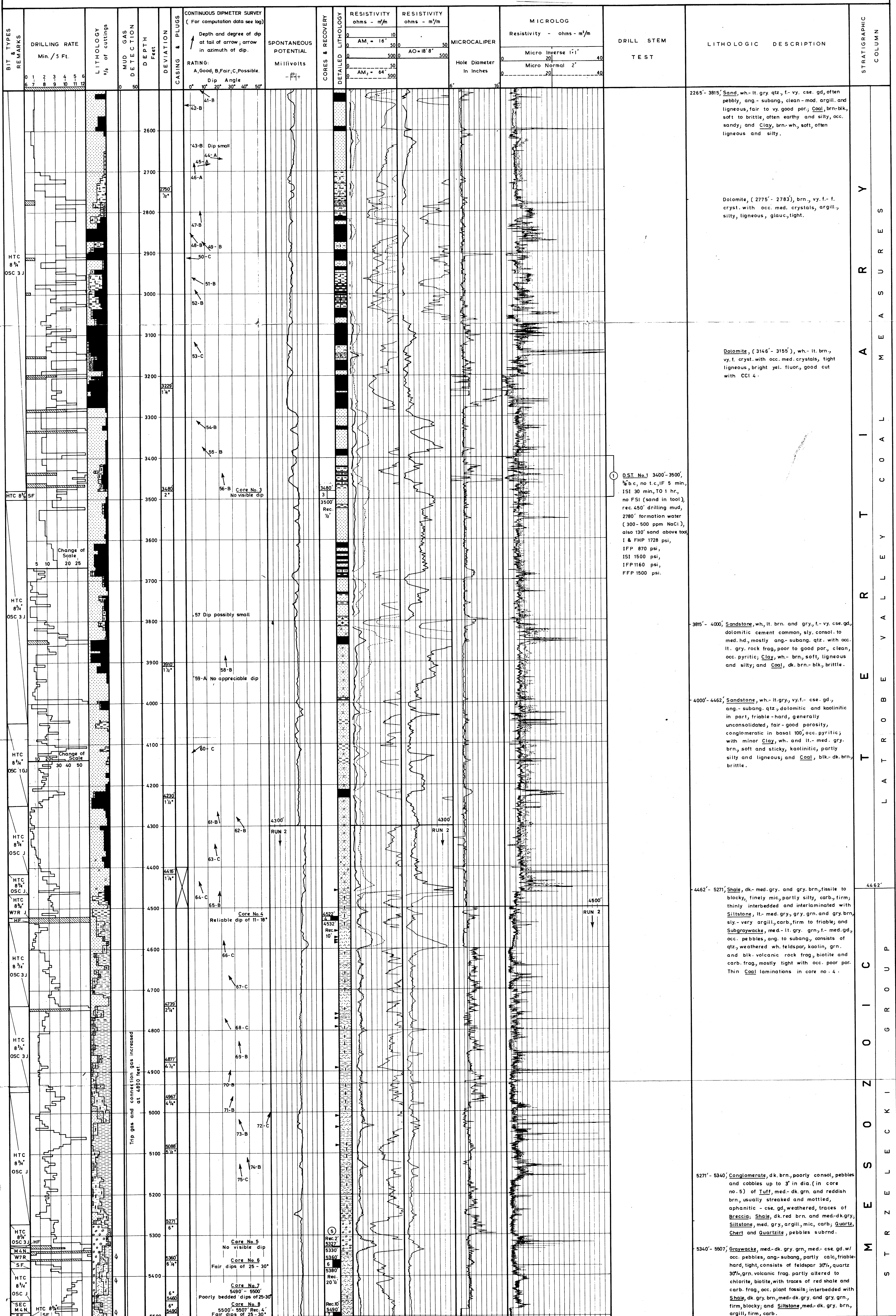


COMPOSITE WELL LOG

CARR'S CREEK NO.1

2500' - 5507'

SHEET 2 OF 2



① DST No. 1 3400'-3500',
 1/8" b.c., no t.c., IF 5 min.,
 151 30 min, TO 1 hr.,
 no FSI (sand in tool),
 rec. 450' drilling mud,
 2780' formation water
 (300-500 ppm NaCl),
 also 130' sand above tool,
 I & FHP 1728 psi,
 IFP 870 psi,
 151 1500 psi,
 IFP 1160 psi,
 FFP 1500 psi.

2265'-3815' Sand, wh.-lt. gry. qtz., f.-vy. cse. gd., often pebbly, ang.-subang. clean-mod. argill. and ligneous, fair to vy. good por.; Coal, brn.-blk., soft to brittle, often earthy and silty, occ. sandy; and Clay, brn.-wh., soft, often ligneous and silty.

Dolomite, (2775' - 2783'), brn., vy. f.-f. cryst. with occ. med. crystals, argill., silty, ligneous, glauc., tight.

Dolomite, (3146' - 3155'), wh.-lt. brn., vy. f. cryst. with occ. med. crystals, tight ligneous, bright yel. fluor., good cut with CCl₄.

3815' - 4000' Sandstone, wh., lt. brn. and gry., f.-vy. cse. gd., dolomitic cement common, sly. consol. to med. hd., mostly ang.-subang. qtz. with occ. lt. gry. rock frag., poor to good por., clean, occ. pyritic; Clay, wh. and lt.-med. gry. silty and ligneous; and Coal, blk.-dk. brn., brittle.

4000' - 4462' Sandstone, wh.-lt. gry., vy. f.-cse. gd., ang.-subang. qtz., dolomitic and kaolinitic in part, friable-hard, generally unconsolidated, fair-good porosity, conglomeratic in basal 100', occ. pyritic; with minor Clay, wh. and lt.-med. gry. brn., soft and sticky, kaolinitic, partly silty and ligneous; and Coal, blk.-dk. brn., brittle.

4462' - 5271' Shale, dk.-med. gry. and gry. brn., fissile to blocky, finely mic., partly silty, carb. firm; thinly interbedded and interlaminated with Siltstone, lt.-med. gry., gry. grn. and gry. brn., sly.-very argill., carb. firm to friable; and Subgraywacke, med.-lt. gry. grn., f.-med. gd., occ. pebbles, ang. to subang., consists of qtz., weathered wh. feldspar, kaolin, grn. and blk. volcanic rock frag., biotite and carb. frag., mostly tight with occ. poor por. Thin Coal laminations in core no. 4.

5271' - 5340' Conglomerate, dk. brn., poorly consol., pebbles and cobbles up to 3' in dia. (in core no. 5) of Tuff, med.-dk. grn. and reddish brn., usually streaked and mottled, aphanitic - cse. gd., weathered, traces of Breccia; Shale, dk. red brn. and med.-dk. gry.; Siltstone, med. gry., argill., mic., carb.; Chert and Quartzite, pebbles subrnd.

5340' - 5507' Graywacke, med.-dk. gry. grn., med.-cse. gd. w/ occ. pebbles, ang.-subang., partly calc. friable-hard, tight, consists of feldspar 30%, quartz 30%, grn. volcanic frag. partly altered to chlorite, biotite, with traces of red shale and carb. frag., occ. plant fossils; interbedded with Shale, dk. gry. brn., med.-dk. gry. and gry. grn., firm, blocky; and Siltstone, med.-dk. gry. brn., argill., firm, carb.

STRATIGRAPHIC COLUMN

Y

R

A

M

E

S

O

I

C

G

R

O

U

P

L

A

T

R

O

B

E

E

V

A

L

L

E

Y

C

O

A

L

M

E

A

S

U

R

E

S