

Schlumberger

PERTH
COMPUTING
CENTRE

VELOCITY PROFILE

Using the following logs:
CALI, RHOB, DT & GR

Company: HARTOGEN ENERGY LIMITED
Well: BURONG - 1 *SEISMIC COMPUTATIONS*
Field: WILDCAT
Country: AUSTRALIA
Reference No: 540439 **Interval:** 0.00 to 4130.00
Date Logged: 8-NOV-1985 **Date Processed:** 24-NOV-1985
Location: 038 18 38.84 S 147 11 51.68 E
Elevations: **KB:** 129.0 FT **DF:** 128.0 FT **GL:** 115.0 FT
Permanent Datum: MSL **Depth Units:** FEET

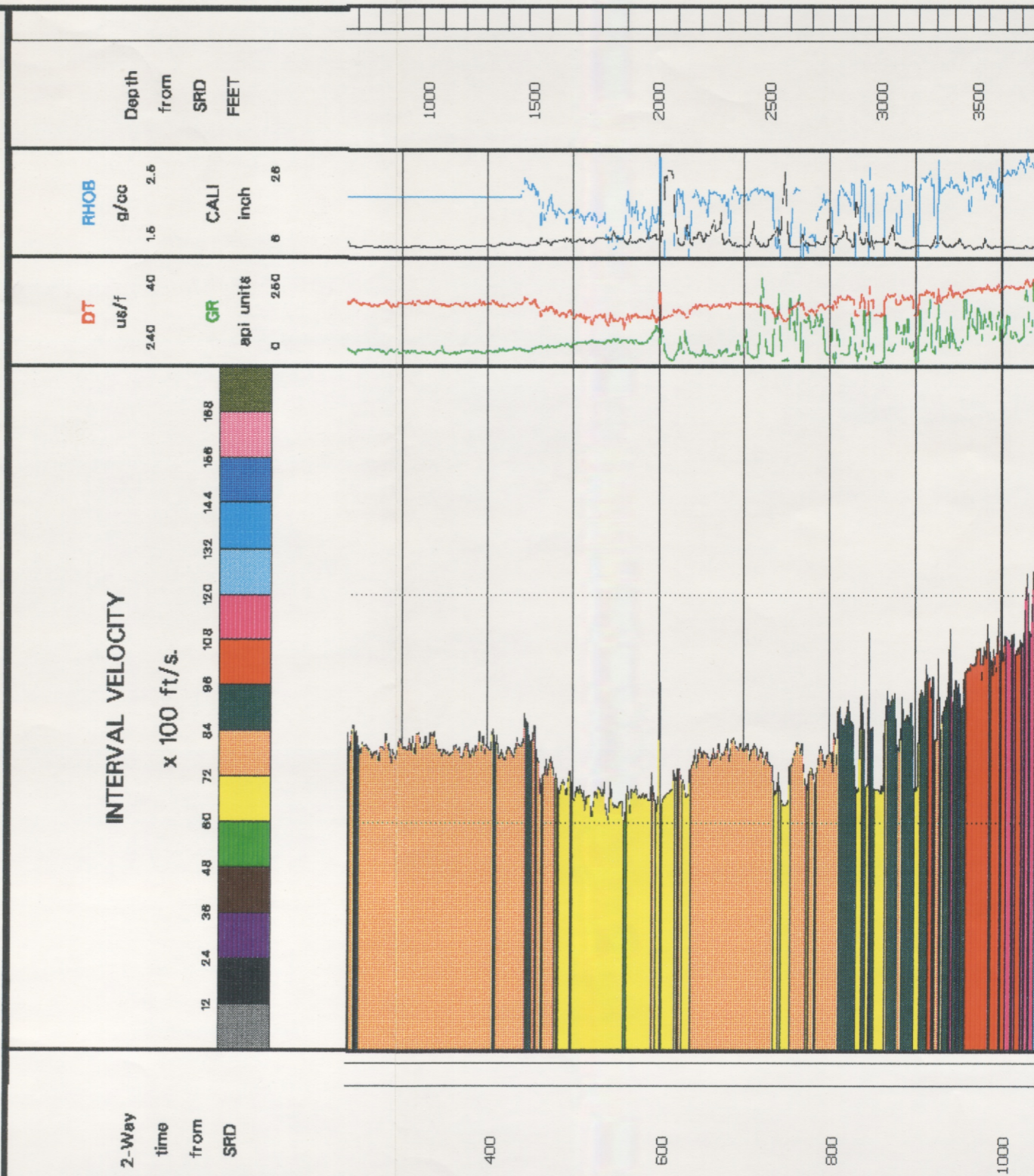
FOLD HERE The well name, location and borehole reference data were furnished by the customer.

All interpretations are opinions based on inferences from electrical or other measurements and we cannot, and do not guarantee the accuracy or correctness of any interpretations, and we shall not, except in the case of gross or willful negligence on our part, be liable or responsible for any loss, costs, damages or expenses incurred or sustained by anyone resulting from any interpretations made by any of our officers, agents or employees. These interpretations are also subject to Clause 4 of our General Terms and Conditions as set out in our current Price Schedule.

FIELD RECORDING: Engineer: A. JAMES Location: MWA Program Version: VSP/GEO
COMPUTATION: Analyst: R. BUNT Centre: ASJ Baseline: 14.2

MUD MEASUREMENTS: $R_m = .287$ OHMM $R_{int} = .255$ OHMM **BHT =** 12.8 DEGF **Bit Size =** 7 7/8"

Remarks: VERTICAL TIME SCALE - 15 CM/SEC



Schlumberger

VELOCITY PROFILE