

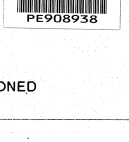
LAKES OIL

FORMATION EVALUATION LOG



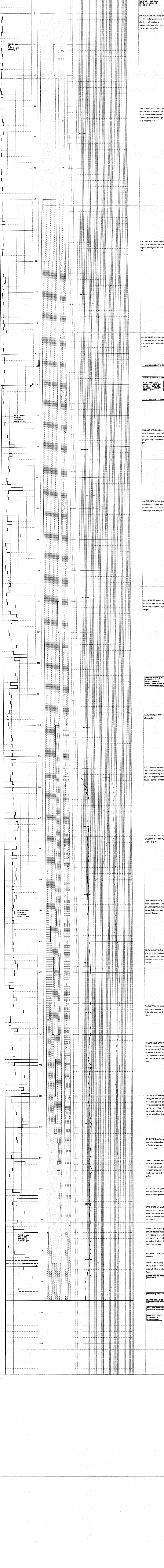
WELL : BAUDIN-1

COMPANY LAKES OIL RIG SIDES DRILLING AREA CIPISLAND BASIN LOCATION 37° 51' 41" S 147° 52' 19" E SPUD DATE 28-09-1999 TD DATE 02-10-1999 TD DRILLER 426 TD WIRELINE 425.6 LOGGED FROM 0 LOGGED TO 450 STATUS PLUGGED & ABANDONED



WELL CONFIGURATION BIT SIZE (in) 8.5 HOLE DEPTH (m) 130m CASING SIZE (in) 7" CASING DEPTH (m) 124m LOGGING ENGINEERS DAVID ADDERLEY BEN MORRIS DEPTH SCALE 1/200

SYMBOLS, ABBREVIATIONS, MUD DATA. Includes symbols for bit runs, casing shoe, liner hanger, and various mud properties like weight, viscosity, and sand content.



Comments and annotations on the right side of the log, including well runs, casing shoe set, and survey data.