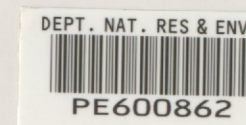


TCPL RESOURCES LTD

LINE GT89-102



PEP-107 SALE, VICTORIA

DATUM 0.0 METRES (MSL)
FINAL STACK



PROCESSED ON VELSEIS SYSTEM, BRISBANE

TCPL RESOURCES LTD

LINE GT89-102

DIRECTION OF SHOOTING

TIME	RMS	INT
0	1800	1800
100	1800	1800
200	1710	1867
290	1620	2129
400	1560	2362
580	2078	2272
680	2115	2026
725	2175	2317
775	2205	2142
950	2820	2609
1200	2600	3014

TIME	RMS	INT
0	1800	1800
100	1800	1800
200	1700	1990
290	1620	2129
400	1560	2362
580	2078	2272
680	2115	2026
725	2175	2317
775	2205	2142
950	2820	2609
1200	2600	3014

TIME	RMS	INT
0	1800	1800
100	1800	1800
200	1700	1990
290	1620	2129
400	1560	2362
580	2078	2272
680	2115	2026
725	2175	2317
775	2205	2142
950	2820	2609
1200	2600	3014

TIME	RMS	INT
0	1800	1800
100	1800	1800
200	1700	1990
290	1620	2129
400	1560	2362
580	2078	2272
680	2115	2026
725	2175	2317
775	2205	2142
950	2820	2609
1200	2600	3014

TIME	RMS	INT
0	1800	1800
100	1800	1800
200	1700	1990
290	1620	2129
400	1560	2362
580	2078	2272
680	2115	2026
725	2175	2317
775	2205	2142
950	2820	2609
1200	2600	3014

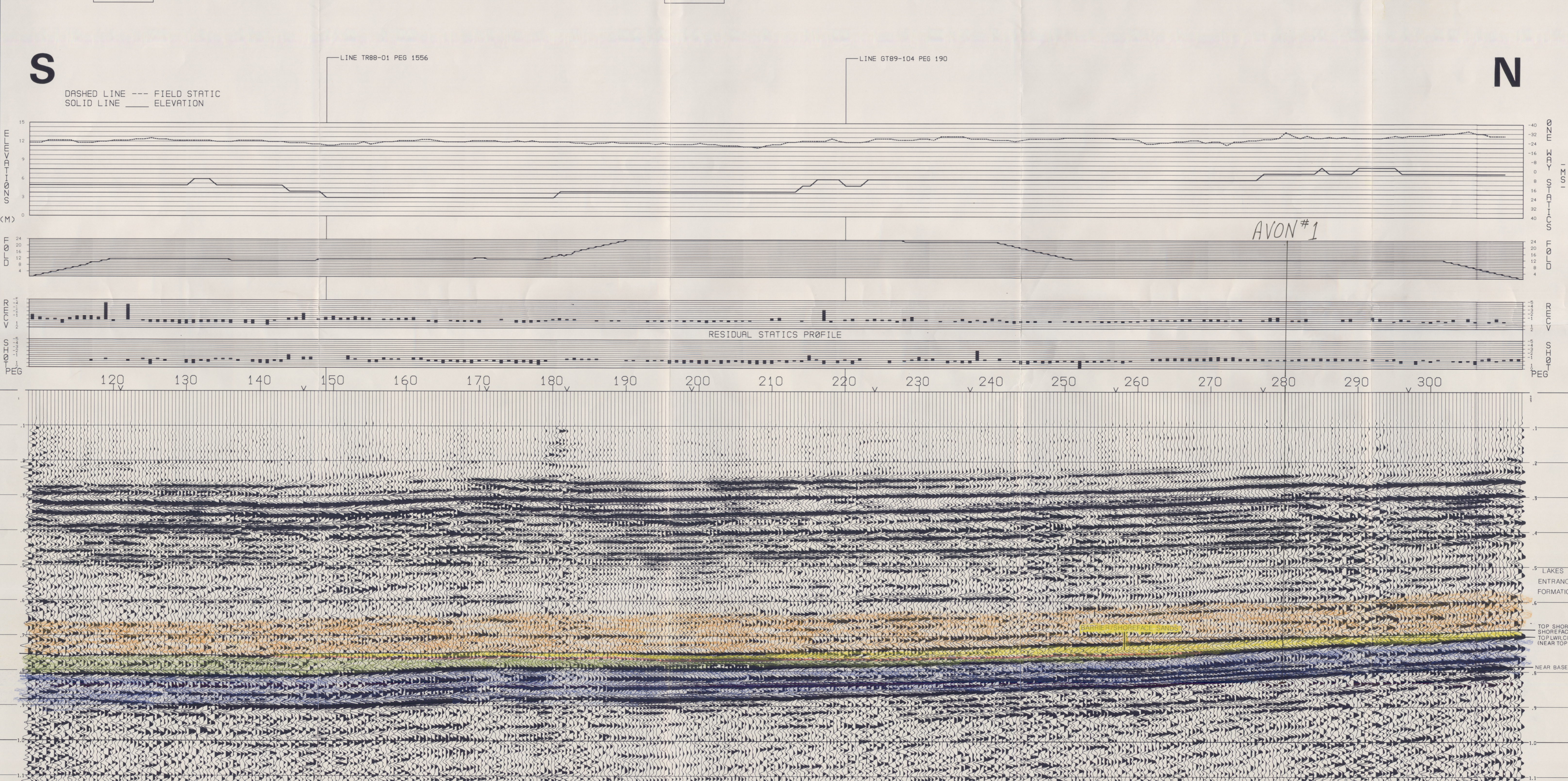
TIME	RMS	INT
0	1800	1800
100	1800	1800
200	1700	1990
290	1620	2129
400	1560	2362
580	2078	2272
680	2115	2026
725	2175	2317
775	2205	2142
950	2820	2609
1200	2600	3014

TIME	RMS	INT
0	1800	1800
100	1800	1800
200	1700	1990
290	1620	2129
400	1560	2362
580	2078	2272
680	2115	2026
725	2175	2317
775	2205	2142
950	2820	2609
1200	2600	3014

TIME	RMS	INT
0	1400	1400
100	1400	1400
200	1400	1400
290	1400	1400
400	1400	1400
580	1400	1400
680	1400	1400
725	1400	1400
775	1400	1400
950	1400	1400
1200	1400	1400

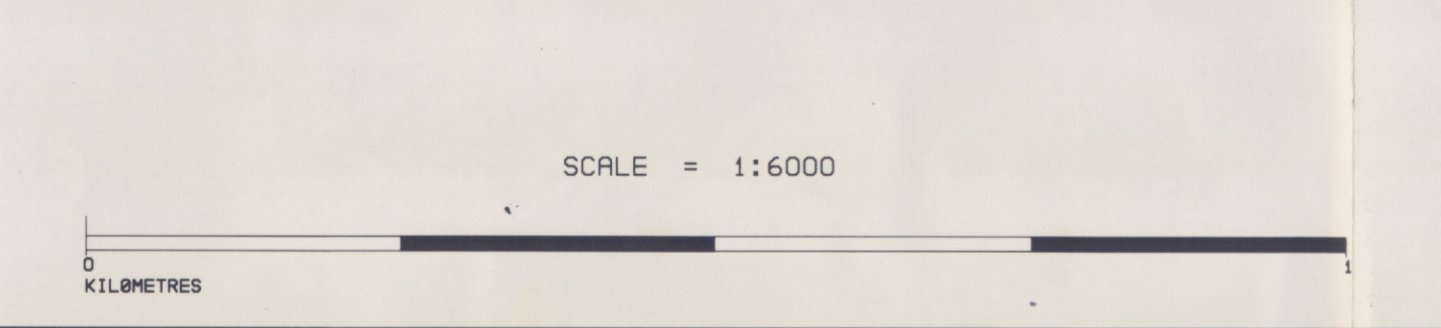
TIME	RMS	INT
0	1400	1400
100	1400	1400
200	1400	1400
290	1400	1400
400	1400	1400
580	1400	1400
680	1400	1400
725	1400	1400
775	1400	1400
950	1400	1400
1200	1400	1400

TIME	RMS	INT
0	1400	1400
100	1400	1400
200	1400	1400
290	1400	1400
400	1400	1400
580	1400	1400
680	1400	1400
725	1400	1400
775	1400	1400
950	1400	1400
1200	1400	1400



RECORDING PARAMETERS		RECORDING GEOMETRY	
RECORDED BY	VELSEIS PTY LTD	SOURCE ARRAY	RAMMER OPERATED OVER 24.0 METRES
DATE SHOT	19TH APRIL - 26TH APRIL, 1989	SHOTS STACKED	X-108, OM-1 ---- S02, OM ---- 24
SOURCE	MINI-SOSIE RAMMERS	RECEIVER ARRAY	24.0 METRES - 12 PHONES CENTRED ON STN
INSTRUMENTS	INPUT OUTPUT DHR 1632	SPREAD	OFF END
RECEIVERS	GEOSPACE 85400, 30 @ 40HZ NATURAL FREQ.	OFFSETS	X.....24
TAPE FORMAT	9 TRACK, 800P1, SEG-Y	GROUP SPACING	24.0 METRES - 24 GROUPS PER RECORD
SAMPLE RATE	2 HILLISECONDS	SHOT SPACING	24.0 METRES
FILTERS LO-CUT	OUT	COVERAGE	1200X - 2400X
HI-CUT	OUT		
NOTCH	IN		

PROCESSING SEQUENCE	
REFORMAT	INPUT TO VELSEIS FORMAT
COORDINATES	SET UP SHOT AND RECEIVER COORDINATES
GEOMETRY	SET UP ELEVATIONS AND SHOT HOLE DEPTHS
EDIT	COMMON DEPTH POINT AND COMMON RECEIVER POINT SORT
STATICS	REMOVE ANY BAD/DEAD TRACES FROM SHOT RECORDS
STATICS	CALCULATE REFRACTION STATICS TO DATUM OF -25 METRES
STATICS	USING THREE LAYER REFRACTION MODEL
STATICS	CALCULATE A BULK STATIC AS AVERAGE OF ALL SHOT AND RECEIVER STATICS AND SUBTRACT FROM EACH TRACE
DCBIAS	REMOVE DC BIAS FROM ALL RECORDS
EQUALISATION	AMPLITUDE EQUALISATION - WINDOW 1200 MSEC
DIVERGENCE	APPLY GAIN FUNCTION T**1.0
NOTCH FILTER	APPLY 50HZ NOTCH FILTER
FILTER	BANDPASS FILTER 15/25 HZ TO 140/160 HZ
DECONVOLUTION	PREDICTIVE SHOT GATHER DECONVOLUTION
VELOCITY	OPERATOR 150 MSEC, GRP 6 MSEC
STATICS	VELOCITY ANALYSIS AND APPLICATION
STATICS	RESIDUAL STATICS - MAX SHIFT +/-10 MSEC
STATICS	WINDOW 0.7 TO 1.0 SECONDS, COHERENCY MATCH > 0.5
STATICS	AND APPLICATION BACK TO ORIGINAL DATA
STATICS	REAPPLY VELOCITY FUNCTIONS
STATICS	RESIDUAL STATICS - MAX SHIFT +/-10 MSEC
STATICS	WINDOW 0.7 TO 1.0 SECONDS, COHERENCY MATCH > 0.5
STATICS	REPLACE BULK STATIC TO CORRECT SECTION TO DATUM
STACK	COMMON DEPTH POINT MEAN STACK
EQUALISATION	POST STACK AMPLITUDE EQUALISATION - WINDOW 600 MSEC
FILTER	POST STACK BANDPASS FILTER 10/20 HZ TO 80/100 HZ
DATUM CORRECTION	FROM REFRACTION DATUM TO SEISMIC DATUM : N.S.L.



CHECKED	NAME
DATE	
APPROVED	NAME
DATE	

***** FILING PARAMETERS *****

FILM REEL NUMBER - 100
 GAIN VALUE - 100
 POLARITY - BLACK +VE
 HORIZONTAL SCALE - 5,000 TR/CM
 VERTICAL SCALE - 7,500 IN/SEC
 FILING DIRECTION - L/R
 DATE FILMED - 07/09/89

INPUT REEL NUMBER - 93842

DATA PROCESSED BY