

# SHELL COMPANY OF AUSTRALIA LIMITED

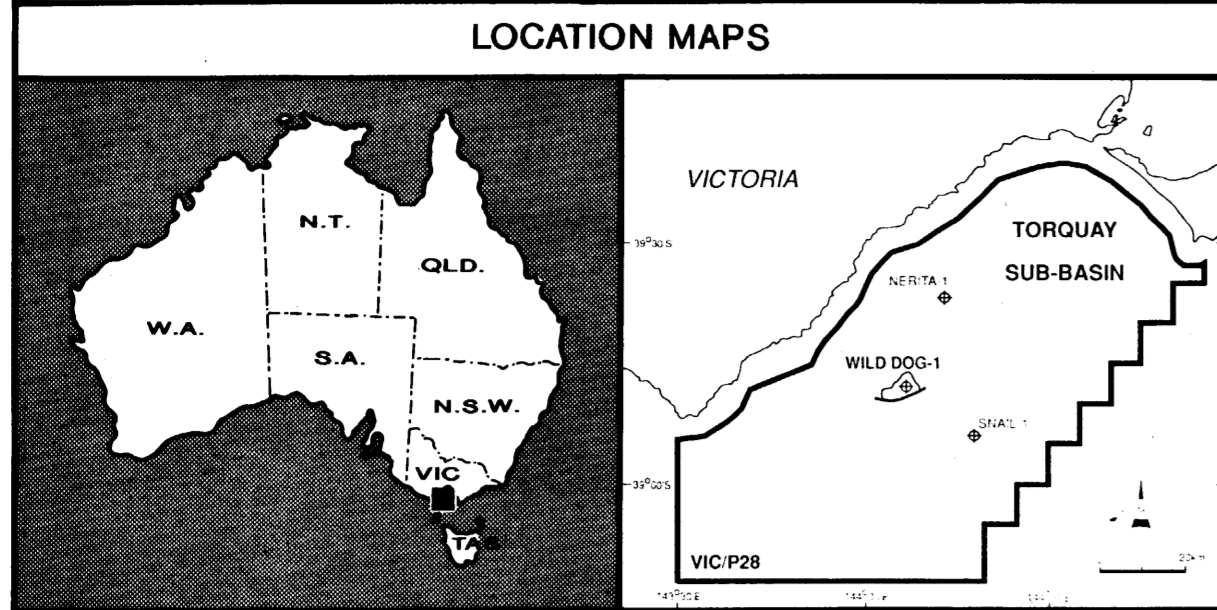
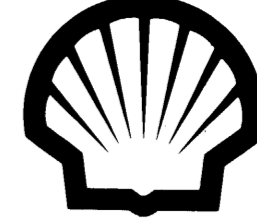
## TORQUAY SUB - BASIN

THE SHELL COMPANY OF AUSTRALIA LIMITED 50%  
WOODSIDE OIL LTD. 50%

# WILD DOG-1

## COMPOSITE WELL LOG

VERTICAL SCALE 1:1000

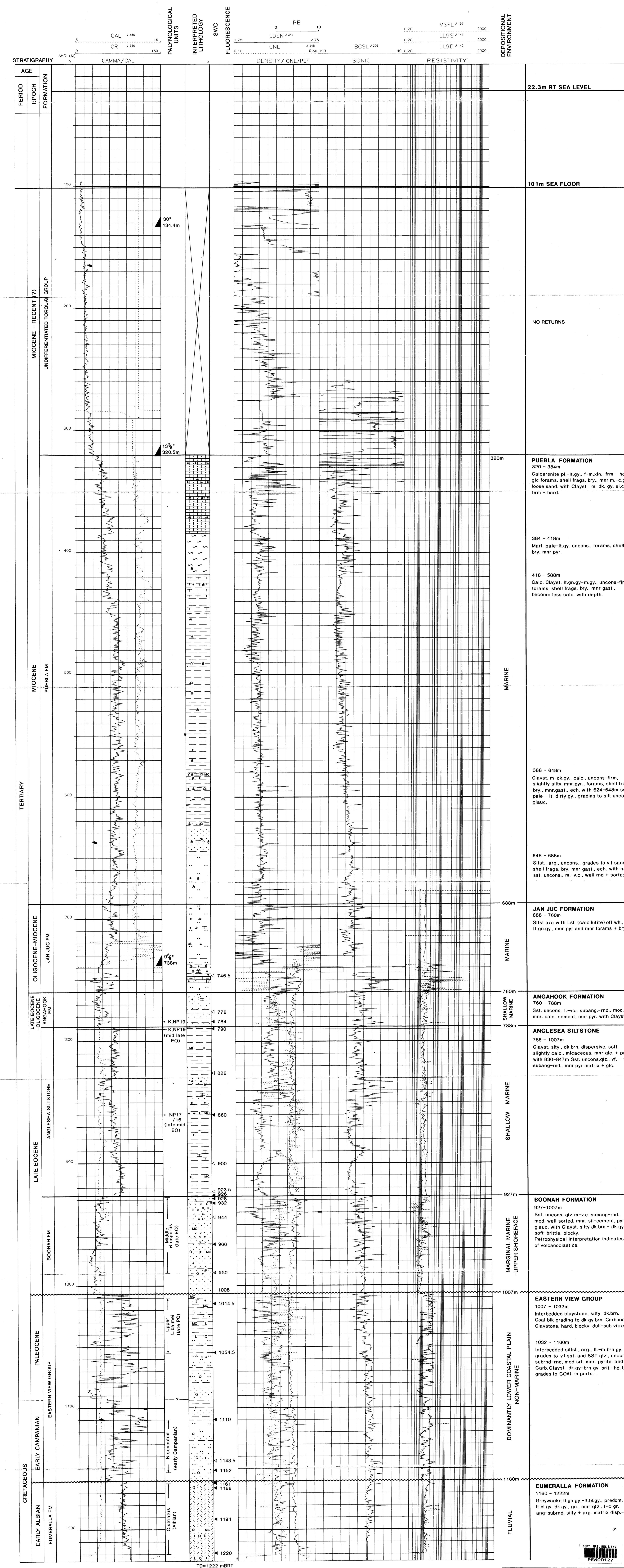


PERMIT: VIC/P28  
LOCATION: LAT. 38°47'16.78"S  
LONG. 144°07'33.08"E  
WELL STATUS: PLUGGED AND ABANDONED  
WATER DEPTH: 79m  
ROTARY TABLE ELEVATION: 22.3m  
TOTAL DEPTH: 1222mrt

START OPERATION: 22/12/92  
SPUD DATE: 24/12/92  
ABANDONED: 9/1/93  
OPERATOR: SHELL  
DRILL RIG: OCEAN EPOCH (DIAMOND M DRILLING)  
LOGGED BY: HALLIBURTON  
MUD LOGGING: HALLIBURTON

ENGINEERING LEGEND:		CASING RECORD		OPEN HOLE RECORD	
9 3/4"	CASING DEPTH AND SIZE	30"	SHOE DEPTH	36"	INTERVAL IN METRES
2249m		134.4 mrt		17 1/2"	- TO 135 mrt
	SIDE WALL CORE	320.5 mrt		12 1/2"	- TO 325 mrt
	(NO RECOVERY)	738 mrt		8 1/2"	- TO 743 mrt
					- TO 1222 mrt

LITHOLOGY			CEMENT		FOSSILS		ACCESSORIES		HYDROCARBON SHOWS			
	CONGLOMERATE		LIMESTONE		SILICA		CORALS		Q	QUARTZOSE		FLUORESCENCE
	SANDSTONE		DOLOMITE		CALCITE		FORAMINIFERA		F	FELDSPATHIC		GAS SHOW
	SILTSTONE		MARL		DOLOMITE		OSTRACODS		L	LITHIC		INTERPRETED AS GAS PRODUCTIVE
	CLAYSTONE/MUDSTONE		GREYWACKE		PYRITE		PLANT REMAINS		GL	GLAUCONITIC		PROVEN GAS PRODUCTIVE
	SHALE		TUFF				SPICULES		FG	FERRUGINOUS		PROVEN CONDENSATE PRODUCTIVE
	COAL		INTRUSIVE				OOLITHS		MC	MICACEOUS		OIL SHOW
							CRINOIDS		LC	LIGNITE/CARBONACEOUS		HEAVY OIL
							ECHINODERMS		P	PYRITE		INTERPRETED AS OIL PRODUCTIVE
							UNDIFFERENTIATED FOSSIL FRAGMENTS					PROVEN OIL PRODUCTIVE
							GASTROPODS					
							BRYOZOA					



SHELL AUSTRALIA  
UPSTREAM OIL & NATURAL GAS  
TORQUAY SUB - BASIN

**WILD DOG-1**  
**COMPOSITE WELL LOG**

1 : 1000  
Date : SEPT 1993  
Report No. : SDA 1085  
Drawing No. : 28566

Encl. 1

FROM WILD DOG-1 WELL COMPLETION REPORT VOLUME 2 (INTERPRETIVE DATA)