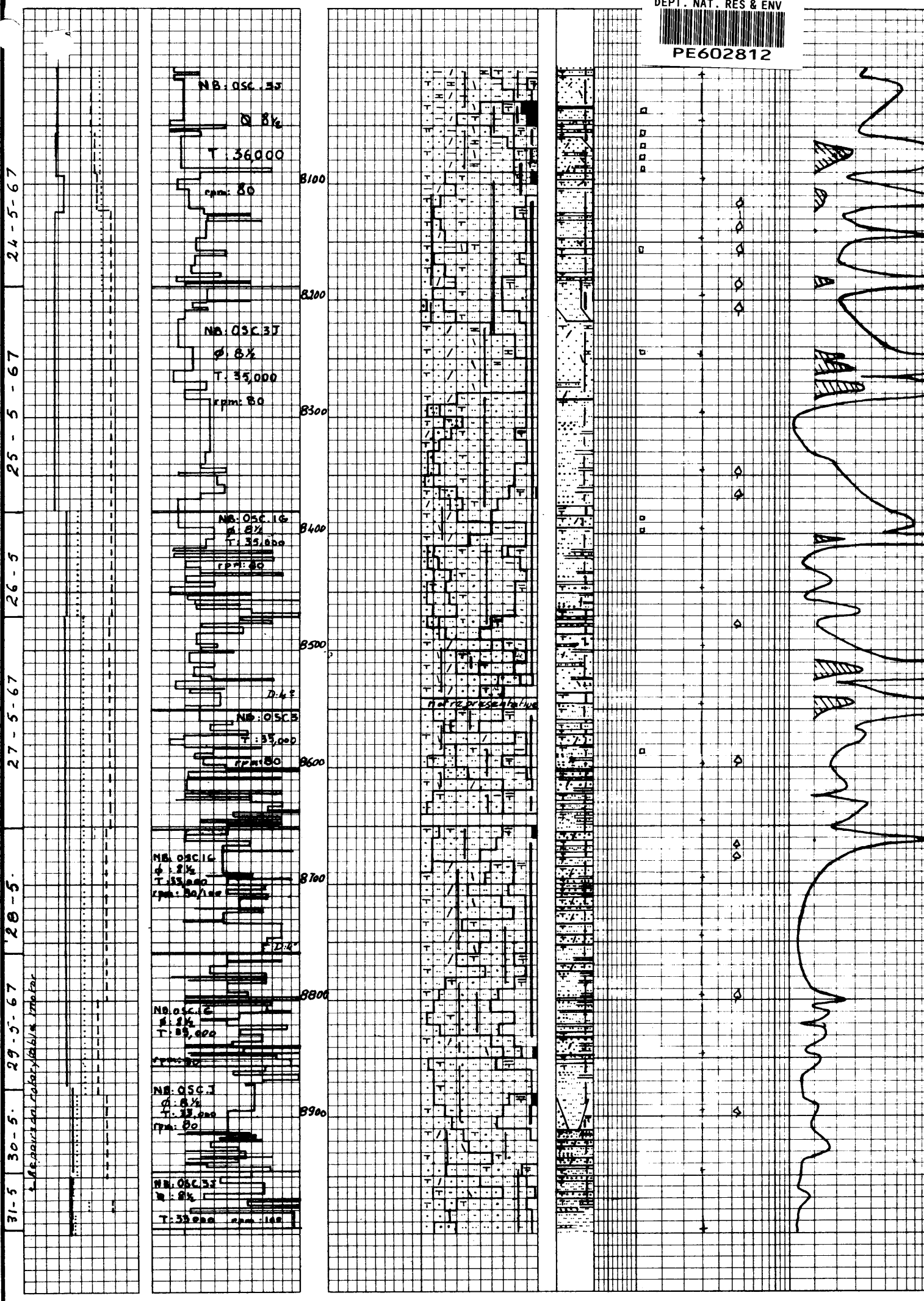




PE602812

PECTEN-1A

13



8005 to 8035:
Sst, dirty wh, occa gn, as above but f. f. (ang)-frnd, srt, (carb), more abundant matrix of, cl, weathered (alt Qz), in place calc, (Por)

8035 to 8060:
Sst as above interbedded with Sh, gy & gygn and C

8060 to 8080:
Sst as 8005-035, f, occa beige when calc. (Por), and Sh as above and minor Sst - brn, fri, s, carb, (py). From 8070 to 8100

8090 to 8218: Mainly
Sst, lt gy & gygn, (fri), generally crs, carb, mic, fld, in part s

minor Sst as 8060-90 and below 8110

8218 to 8285:
Sst, dirty wh-lt gy, fri, f-med, occasio crs, (Srt)-srt, Qz, fld, lithic material, mic, blk grn, (carb), chlorite (red org grn), in a matrix of Qz & fld chips & cl, in part beige (calc). (Por)

Note: grading to greywacke.

8285 to 8485:
Sst, lt gy, fri, crs, (carb), fld, and Sst, gy-dk gy, cons, cl, (mic), (carb) with, mainly below 8375, streaks & beds of: Sst as above, and Sh, whitish-lt gy, f-slt, srt, (ang)-frnd Qz, lithic material, mic, fld, (carb) in a cl cmt. (Por)

Sh, gy, blk-platy, earthy, silt, (carb) rare Py,
Sh, dk brn, fis, silt, s, carb, carb Pit Rem.

8485 to 8546:
Sst, whitish, fri, f-f, in part med, ang (srt) Qz, lithic material, fld, mic, (carb), minor org mineral (zeolite?) wh cl, in a fld, cl, qz matrix (Por)

Note: grading to greywacke.

and Sst, whitish-lt gy, srt as above with minor streaks of Sh & Sst as above

8546 to 8625: Interbedded Sst as 8485-8486 and Sst & Sh as above

8625 to 8685: Mainly
Sst, dirty wh-lt gy, s, mic, fld, crs, grading to f sst (Gen at 83, limit) and Sst, dk gy, cl, mic, (carb) with:
Sh dk gy, platy, silt, (carb) and Sh dk brn, silt, s, carb. Pit Rem.

8685 to 8775: Mainly
Sst, dirty wh, in part (gn), fri, f-f, occa f-med, ang-(ang), frns Qz, lithic knn, fld, chloritic, mic, yel org mineral, (carb), in a fld, cl very abundant matrix - (Por). Grading to greywacke interbedded with Sst & Sh as above

8775 to 8833: Mainly
Sst, dirty wh, (gn), s, mic, fld, cl, (carb) crs, and minor Sst, gy, cl, mic, (carb) with interbeds & Strk of Sh, and Sst

8833 to 8847:
Sst as 8215-225

8847 to 8912: Mainly
Sst as 8775-8833 very thinly interbedded at base with Sh & Sst. Minor C

8912 to 9010: Interbedded Sst & Sst f-med gy-(gn) & Sst f-slt, fld as above, with minor Sh - below 8930, occasional Qz Sst, f, silt, ang, (carb), mic, red org grn in a qz cmt matrix, tight