

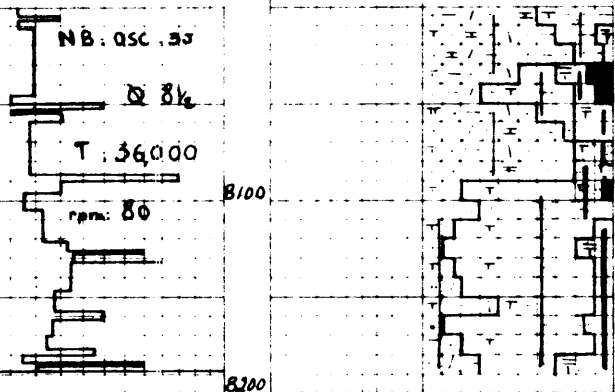


PE602811

PECTEN - A

12

24-5-67



8100

8200

8300

8400

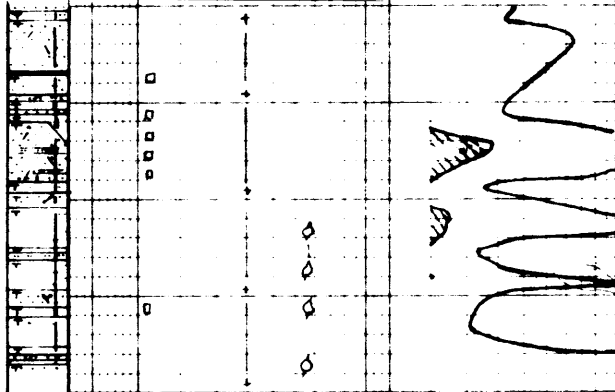
8500

8600

8700

8800

8900



8005 - 8035:  
 Sst silty, wh occa gn, as above but f. F,  
 and rna. Sst, carb, more abundant  
 matrix of Cl, weathered (Kst Ra), in place  
 calc Per

8035 - 8060:  
 Sst as above interbedded with  
 Sst as above and Sh, gy + gygn and C

8060 - 8080:  
 Sst as 8005 - 035, f. occa beige when calc.  
 (Per and Sh as above and minor Sst  
 brn. frs carb. py. From 8070 to 8100

8080 - 8185 Mainly  
 Sst f. a. + gygn, (frs), generally crs,  
 calc mic fld, in part S

minor Sst as 8060 - 90 and below 8110  
 Sh a. brn fis, silt carb, with carb Pit Ram