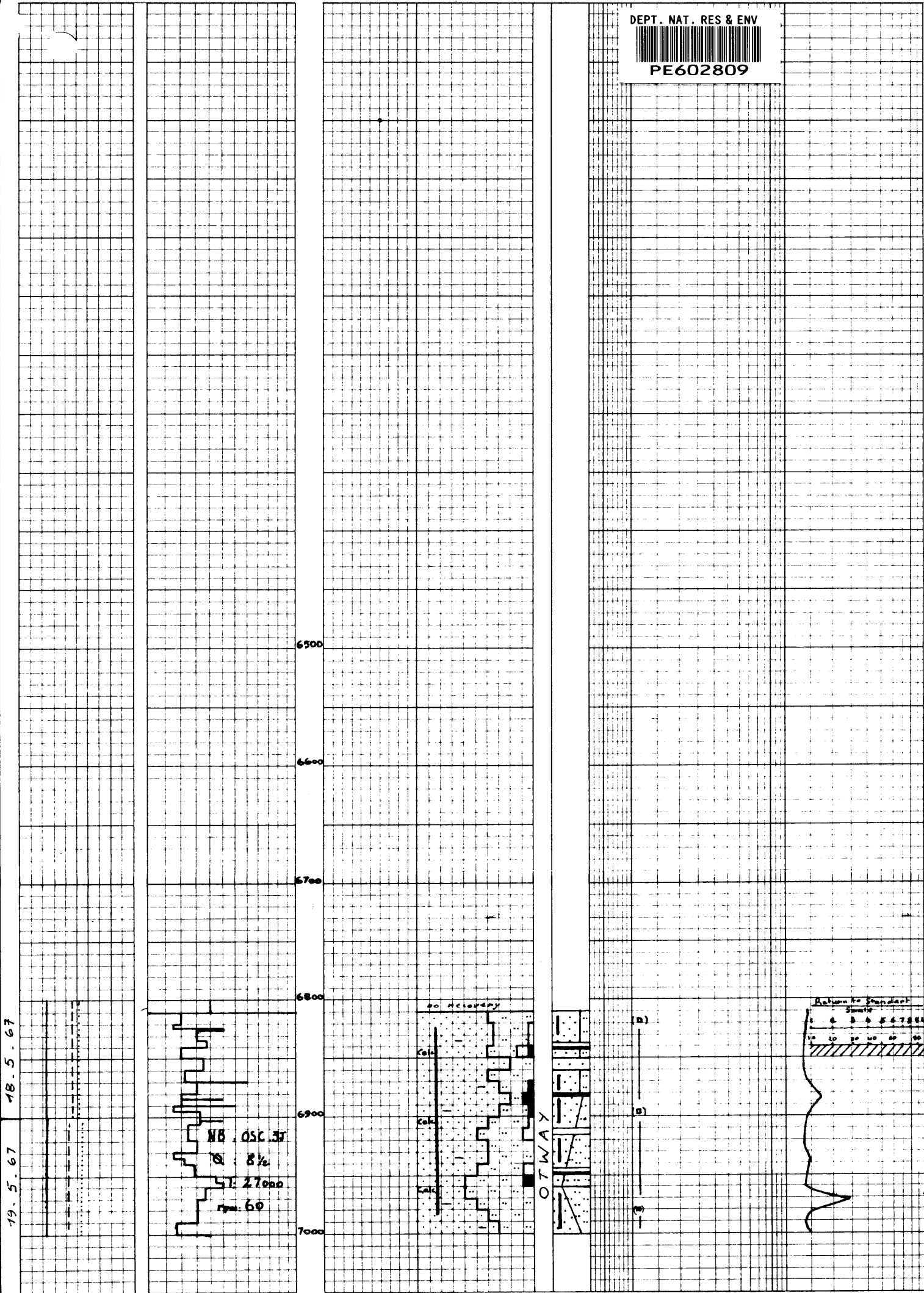


DEPT. NAT. RES & ENV



PE602809



6810' to 7050' grading bedded

Sst: hardly por, in parts (por) Hgn. Hgy, f to medium, srt, (ang, to (rnd), sph, grains, in a gn cl cement (cons) with Qz, Calc, coal grains and Pyr nodules.

Slt: lt gy to med gy, in a cl cement cons, mod hd, occasionally finely Mic, with thin coal streaks and speck, and Pyr nodules

Occasional stringers of slt clay wh lt, gy, soft. Coal streaks