

GMA LOGM

KB ELEVATION=28.0 M

TIME DATUM =0.0 M  
 SAMPLE INTERVAL =2.0 MS  
 AMPLITUDE =1.0  
 # OF TRACES =15  
 CHECK SHOT APPLIED =Y  
 TRAVEL TIME CURVE =SONIC  
 MULTIPLES =NONE

LOGS USED IN RC CALC. =SONIC ONLY  
 AGC LENGTH =1000.0 MS  
 TRACES PER INCH =20.0  
 INCHES PER SEC =7.87

WAVELET # 1 RICKER :  
 PERIOD =26.0 MS  
 FREQUENCY =30.0 Hz  
 PHASE =0 deg

WAVELET # 2 RICKER :  
 PERIOD =19.5 MS  
 FREQUENCY =40.0 Hz  
 PHASE =0 deg

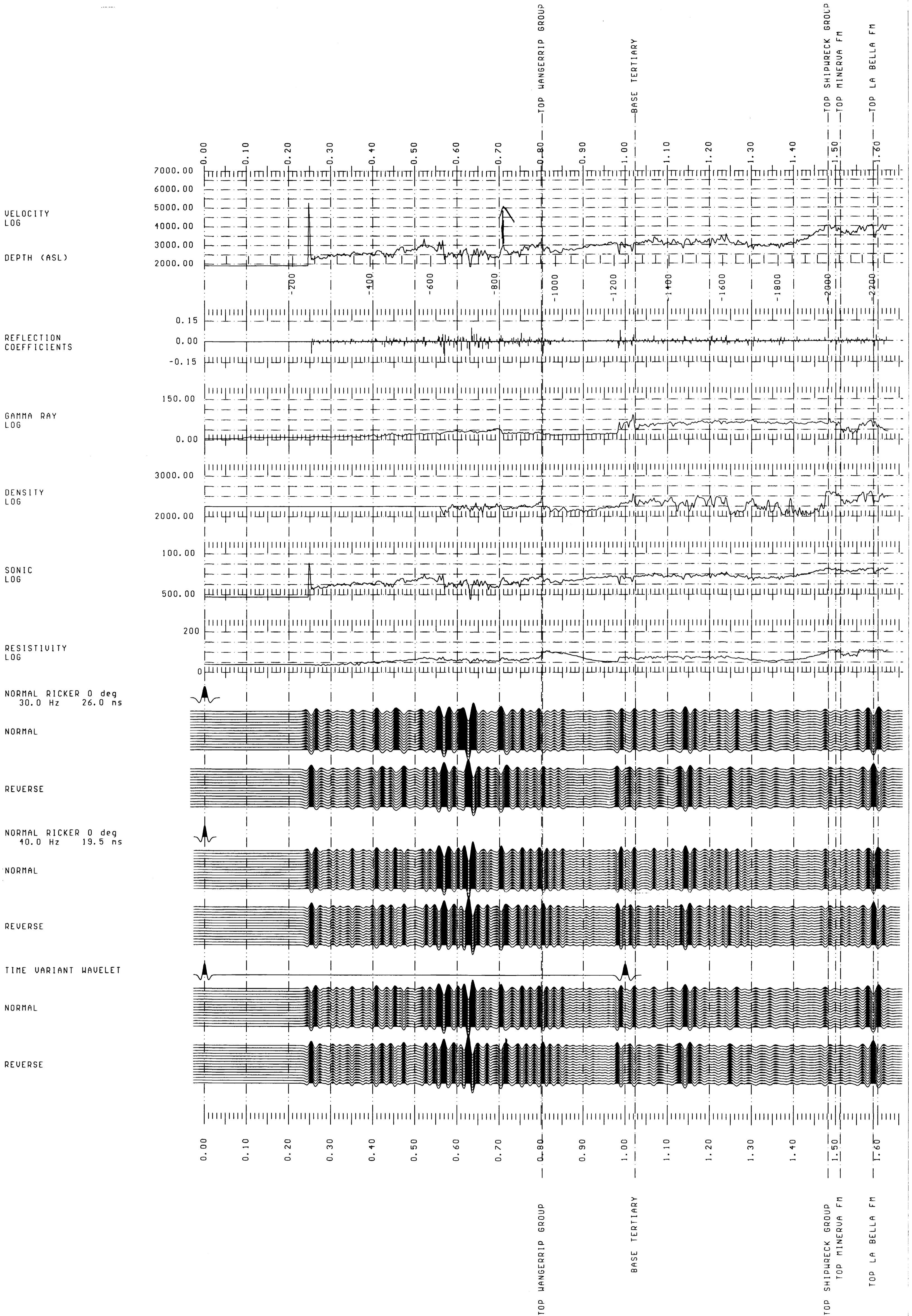
WAVELET # 3 TIME VARIANT WAVELET :  
 2 Component Wavelets

T.U.WAVELET #3.1 RICKER :  
 PERIOD =19.5 MS  
 FREQUENCY =40.0 Hz  
 PHASE =0 deg

T.U.WAVELET #3.2 RICKER :  
 PERIOD =26.0 MS  
 FREQUENCY =30.0 Hz  
 PHASE =0 deg



SYNTHETIC SEISMOGRAM GENERATED  
 USING SONIC LOG ONLY  
 MUSSEL - 1



MUSSEL\_1

FORMATION	DEPTH n(KB)	DEPTH n(ASL)	TIME Seconds	AVG VEL n/s	RMS VEL n/s	INT VEL n/s	INT TIME Seconds	INT DEN kg/nnn
TOP WANGERRIP GROUP	985.0	-957.0	0.803	2385	2435			
BASE TERTIARY	1302.0	-1274.0	1.024	2488	2535	2862	0.221	2212.4
TOP SHIPWRECK GROUP	2027.0	-1999.0	1.482	2697	2749	3164	0.458	2267.6
TOP MINERVA FM	2084.0	-2056.0	1.512	2720	2775	3878	0.029	2558.9
TOP LA BELLA FM	2231.0	-2203.0	1.590	2772	2832	3767	0.078	2434.0

CHECK SHOTS

DEPTH (n)	CHECK SHOT TIME (ns)	CHECK SHOT INT VEL (n/s)	SONIC TIME (ns)	SONIC INT VEL (n/s)	TIME DIFF (ns)
237.3	124.6		124.6		0.0
304.8	160.0	1905.0	152.3	2434.0	7.7
914.0	387.0	2683.7	384.1	2627.9	2.9
1524.0	592.0	2975.6	588.3	2987.6	3.7
2133.0	777.0	3291.9	773.0	3298.0	4.0