

Schlumberger

MELBOURNE LOG INTERPRETATION CENTRE

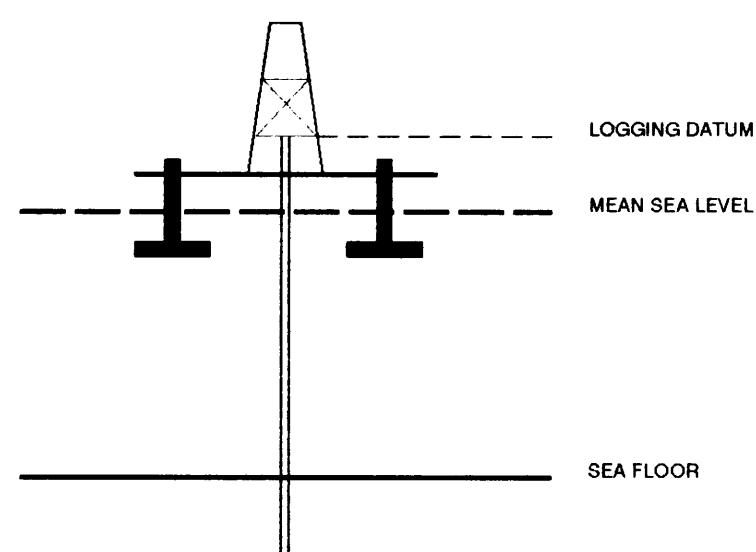
VERTICAL SEISMIC PROFILE



ZERO OFFSET VSP PLOT 5
WAVESHAPING AND CORRIDOR STACK

Company: BHP PETROLEUM
Well: ERIC THE RED-1
Field: WILDCAT
Country: AUSTRALIA
Reference No: 560880 Interval: 1848.00 to 373.00
Date Logged: 27 FEB 1992 Date Processed: 5/3/92
Location: 39 00' 45.44" S 143 10' 51.45" E
Elevations: KB: 25.30 DF: 25.00 GL: -75.00
Permanent Datum: MSL Depth Units: METRES
FIELD RECORDING: Engineer: S NAKANISHI Location: Program Version: 580-325
COMPUTATION: Analyst: Z KATELIS Centre: SYJ Baseline: 20.2

ELEVATION ABOVE MEAN SEA LEVEL
Logging Datum: 25.00
Seismic Reference Datum: 0.00



Total Number of Levels: 80
Depth Reference: SRD
Time Reference: SRD

Run	Date	Tool Type	Bit Size/Depth	Casing Size/Depth	Top Depth	Bottom Depth	
VSP	Date	Gun Offset	Hydro Offset	Gun Elevation	Hydro Elevation	Gun Azimuth	Hydro Azimuth
1	27-FEB-1992	47 M	47 M	7 BELOW MSL	14 M BELOW MSL	50.0	50.0

REMARKS

The well name, location and baseline reference data were furnished by the customer.

Clause 4 of our General Terms and Conditions set out our current Price Schedule.

CLIENT = BHP PETROLEUM
FIELD = WILDCAT
WELL = ERIC THE RED-1

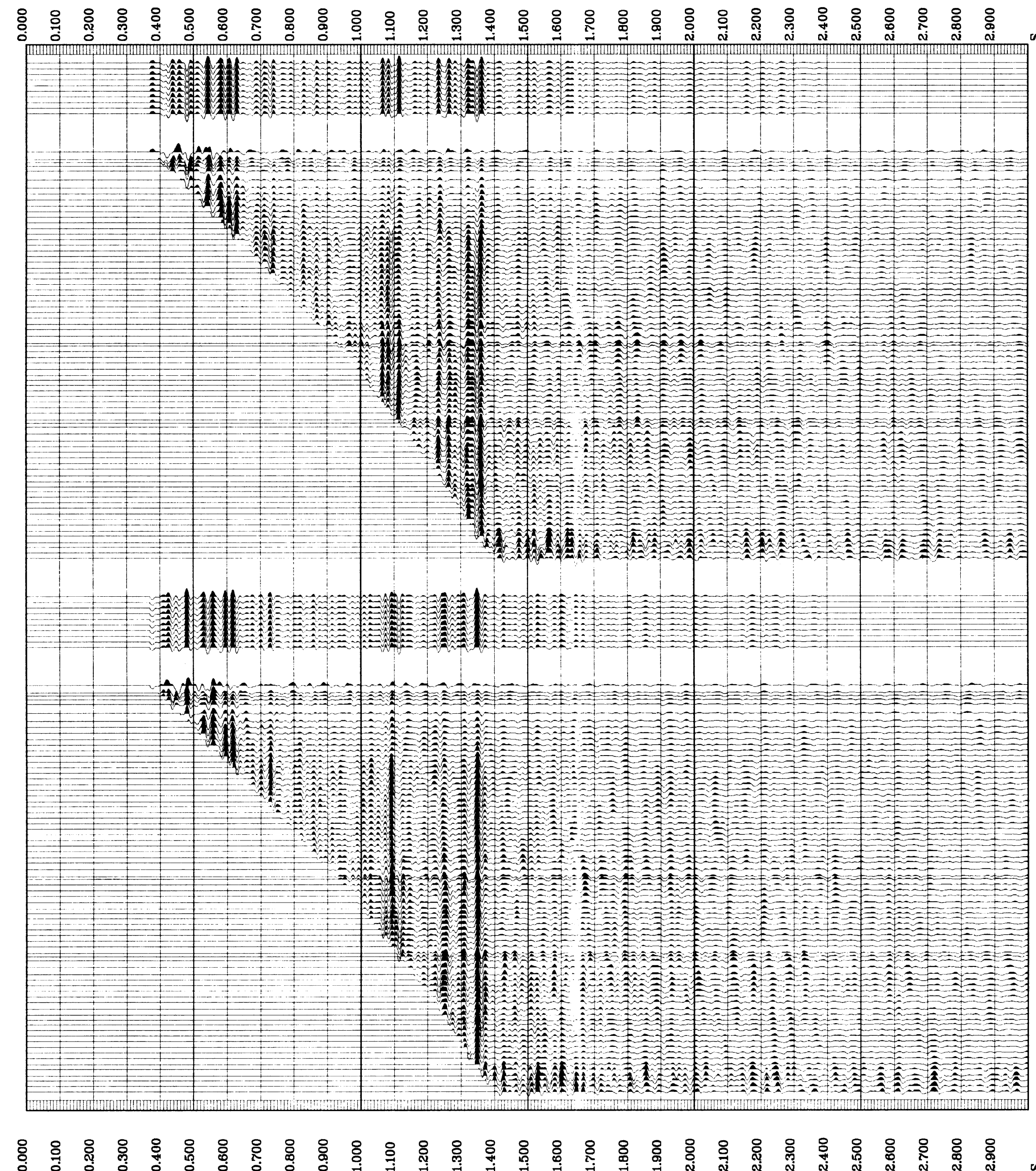
*** CORRIDOR STACK ***
CORRIDOR WINDOW : 100 MS
POLARITY (S.E.G.) : NORMAL

**** WAVESHAPING ****
PROCESSING SEQUENCE:
MEDIAN COHERENCY STACK APPLIED
STATIC CORRECTION TO MSL
BAND PASS FILTER : 5-100 HZ
NORMALISATION GATE : 100 MS
DOWNGOING WAVEFIELD SUBTRACTION
WAVESHAPING DECONVOLUTION:
10-60 HZ ZERO PHASE WAVELET
OPERATOR LENGTH : 0.7 S
PREWHITENING : 2 %
ENHANCED UPGOING WAVEFIELD
POLARITY (S.E.G.) : NORMAL

*** CORRIDOR STACK ***
CORRIDOR WINDOW : 100 MS
POLARITY (S.E.G.) : REVERSE

**** WAVESHAPING ****
PROCESSING SEQUENCE:
MEDIAN COHERENCY STACK APPLIED
STATIC CORRECTION TO MSL
BAND PASS FILTER : 5-100 HZ
NORMALISATION GATE : 100 MS
DOWNGOING WAVEFIELD SUBTRACTION
WAVESHAPING DECONVOLUTION:
10-60 HZ ZERO PHASE WAVELET
OPERATOR LENGTH : 0.7 S
PREWHITENING : 2 %
ENHANCED UPGOING WAVEFIELD
POLARITY (S.E.G.) : REVERSE

RAW DEPTH M	TRUE VERTICAL DEPTH MSL M	TRANSIT TIME S	LEVEL NO
0.0	0.0	0.000	0
0.0	0.0	0.000	0
0.0	0.0	0.000	0
0.0	0.0	0.000	0
1080.0	1055.0	0.480	38
347.0	325.0	0.184	14
385.0	360.0	0.201	15
415.0	390.0	0.215	16
447.0	420.0	0.230	17
497.0	470.0	0.250	18
540.0	515.0	0.267	19
580.0	555.0	0.283	20
630.0	600.0	0.299	21
660.0	635.0	0.316	22
700.0	675.0	0.332	23
740.0	715.0	0.348	24
780.0	755.0	0.364	25
820.0	795.0	0.379	26
860.0	835.0	0.395	27
900.0	870.0	0.411	28
940.0	915.0	0.426	29
980.0	955.0	0.440	30
1020.0	995.0	0.455	31
1050.0	1030.0	0.461	32
1090.0	1070.0	0.472	33
1100.0	1075.0	0.476	34
1125.0	1095.0	0.485	35
1160.0	1130.0	0.500	36
1200.0	1170.0	0.520	37
1240.0	1210.0	0.532	38
1290.0	1260.0	0.548	39
1304.0	1270.0	0.553	40
1310.0	1275.0	0.555	41
1325.0	1290.0	0.557	42
1400.0	1365.0	0.584	43
1440.0	1405.0	0.597	44
1480.0	1445.0	0.610	45
1525.0	1490.0	0.622	46
1560.0	1530.0	0.632	47
1600.0	1570.0	0.643	48
1640.0	1610.0	0.654	49
1680.0	1650.0	0.664	50
1720.0	1690.0	0.675	51
1760.0	1730.0	0.686	52
1800.0	1770.0	0.697	53



COMPANY BHP PETROLEUM
FIELD WILDCAT
WELL ERIC THE RED-1
COUNTRY AUSTRALIA

