

Schlumberger MELBOURNE LOG INTERPRETATION CENTRE



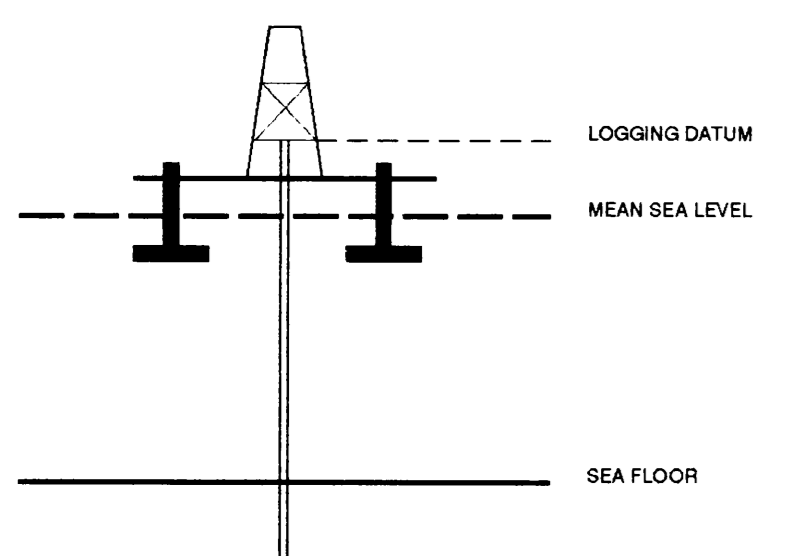
# VERTICAL SEISMIC PROFILE

ZERO OFFSET VSP PLOT 2  
AMPLITUDE RECOVERY

Company: BHP PETROLEUM  
Well: ERIC THE RED-1  
Field: WILDCAT  
Country: AUSTRALIA  
Reference No: 560880 Interval: 1848.00 to 373.00  
Date Logged: 27 FEB 1992 Date Processed: 5/3/92  
Location: 39 00' 45.44" S 143 10' 51.45" E  
Elevations: KB: 25.30 DF: 25.00 GL: -75.00  
Permanent Datum: MSL Depth Units: METRES

FIELD RECORDING: Engineer: S NAKANISHI Location: Program Version: 580-325  
COMPUTATION: Analyst: Z KATELUS Centre: SYJ Baseline: 20.2

ELEVATION ABOVE MEAN SEA LEVEL  
Logging Datum: 25.00  
Seismic Reference Datum: 0.00



Total Number of Levels: 80  
Depth Reference: SRD  
Time Reference: SRD

Run	Date	Tool Type	Bit Size/Depth	Casing Size/Depth	Top Depth	Bottom Depth
VSP Run	Date	Gun Offset	Hydro Offset	Gun Elevation	Hydro Elevation	Gun Azimuth
1	27-FEB-1992	47 M	47 M	7 BELOW MSL	14 M BELOW MSL	50.0

REMARKS

The well name, location and borehole reference data were furnished by the customer.

Clause 4 of our General Terms and Conditions as set out in our current Price Schedule.

FOLD HERE

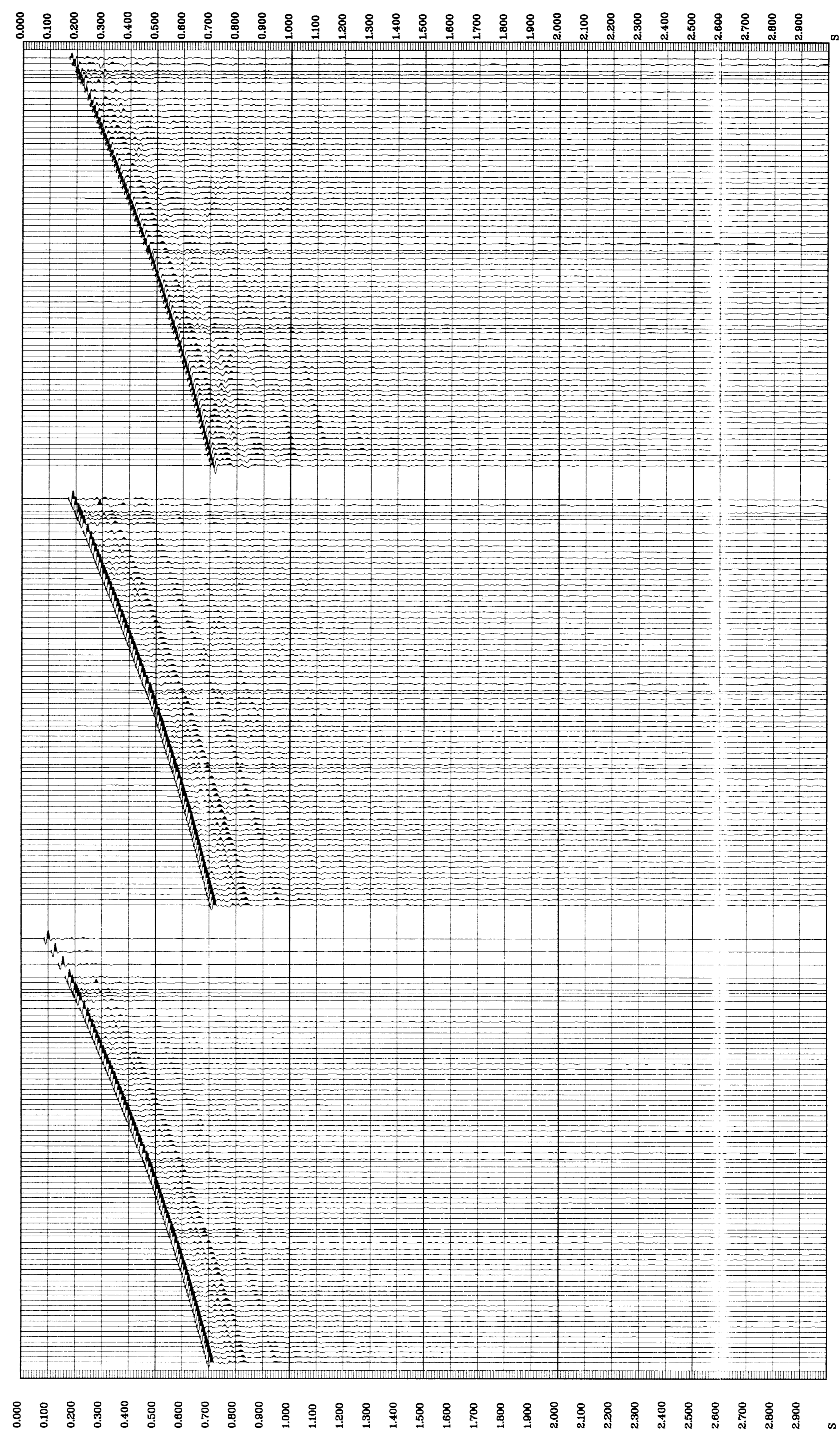
CLIENT = BHP PETROLEUM  
FIELD = WILDCAT  
WELL = ERIC THE RED-1

**\*\* AMPLITUDE RECOVERY \*\***  
VERTICAL COMPONENT  
PROCESSING SEQUENCE:  
MEDIAN COHERENCY STACK APPLIED  
STATIC CORR>N TO MSL  
BAND PASS FILTER : 5-100 HZ  
NORMALISATION GATE : 100 MS  
SCALE : 10 CM/SEC  
POLARITY (S.E.G.) : NORMAL

**\*\* AMPLITUDE RECOVERY \*\***  
VERTICAL COMPONENT  
PROCESSING SEQUENCE:  
MEDIAN COHERENCY STACK APPLIED  
STATIC CORR>N TO MSL  
BAND PASS FILTER : 5-100 HZ  
NORMALISATION GATE : 100 MS  
SCALE : 10 CM/SEC  
POLARITY (S.E.G.) : REVERSE

**\*\* STACKED DATA \*\***  
VERTICAL COMPONENT  
PROCESSING SEQUENCE:  
MEDIAN COHERENCY STACK APPLIED  
SCALE : 10 CM/SEC  
POLARITY (S.E.G.) : REVERSE

RAW DEPTH M	TRUE VERTICAL DEPTH MSL M	TRANSIT TIME S	LEVEL NO	MAX AMPLITUDE	MIN AMPLITUDE
385.0	380.0	0.174	75	139.49	-84.21
387.0	382.0	0.184	74	133.57	-81.87
389.0	384.0	0.201	72	133.21	-83.88
391.0	386.0	0.215	70	131.89	-79.38
393.0	388.0	0.229	69	128.26	-81.49
395.0	390.0	0.241	68	126.59	-77.87
397.0	392.0	0.254	67	124.18	-77.86
399.0	394.0	0.267	66	120.21	-81.13
401.0	396.0	0.277	65	118.25	-81.11
403.0	398.0	0.289	64	115.71	-81.32
405.0	400.0	0.300	63	113.26	-81.32
407.0	402.0	0.311	62	110.79	-79.38
409.0	404.0	0.321	61	108.25	-77.87
411.0	406.0	0.331	60	105.71	-77.87
413.0	408.0	0.341	59	103.26	-75.91
415.0	410.0	0.349	58	100.79	-74.35
417.0	412.0	0.356	57	98.25	-72.86
419.0	414.0	0.363	56	95.71	-71.31
421.0	416.0	0.369	55	93.26	-71.31
423.0	418.0	0.374	54	90.79	-69.38
425.0	420.0	0.379	53	88.25	-67.87
427.0	422.0	0.383	52	85.71	-67.87
429.0	424.0	0.387	51	83.26	-65.91
431.0	426.0	0.390	50	80.79	-64.35
433.0	428.0	0.393	49	78.25	-62.86
435.0	430.0	0.395	48	75.71	-61.31
437.0	432.0	0.397	47	73.26	-59.38
439.0	434.0	0.399	46	70.79	-57.87
441.0	436.0	0.401	45	68.25	-56.31
443.0	438.0	0.402	44	65.71	-54.35
445.0	440.0	0.403	43	63.26	-52.86
447.0	442.0	0.404	42	60.79	-51.31
449.0	444.0	0.404	41	58.25	-49.38
451.0	446.0	0.404	40	55.71	-47.87
453.0	448.0	0.403	39	53.26	-46.31
455.0	450.0	0.402	38	50.79	-44.35
457.0	452.0	0.400	37	48.25	-42.86
459.0	454.0	0.397	36	45.71	-41.31
461.0	456.0	0.393	35	43.26	-39.38
463.0	458.0	0.388	34	40.79	-37.87
465.0	460.0	0.382	33	38.25	-36.31
467.0	462.0	0.375	32	35.71	-34.35
469.0	464.0	0.367	31	33.26	-32.86
471.0	466.0	0.358	30	30.79	-31.31
473.0	468.0	0.348	29	28.25	-29.38
475.0	470.0	0.337	28	25.71	-27.87
477.0	472.0	0.325	27	23.26	-26.31
479.0	474.0	0.312	26	20.79	-24.35
481.0	476.0	0.298	25	18.25	-22.86
483.0	478.0	0.283	24	15.71	-21.31
485.0	480.0	0.267	23	13.26	-19.38
487.0	482.0	0.250	22	10.79	-17.87
489.0	484.0	0.232	21	8.25	-16.31
491.0	486.0	0.213	20	5.71	-14.35
493.0	488.0	0.193	19	3.26	-12.86
495.0	490.0	0.171	18	0.79	-11.31
497.0	492.0	0.148	17	-1.71	-9.38
499.0	494.0	0.124	16	-4.26	-7.87
501.0	496.0	0.098	15	-6.79	-6.31
503.0	498.0	0.071	14	-9.25	-4.35
505.0	500.0	0.043	13	-11.71	-2.86
507.0	502.0	0.014	12	-14.18	-1.31
509.0	504.0	0.000	11	-16.65	0.25
511.0	506.0	0.000	10	-19.11	1.71
513.0	508.0	0.000	9	-21.58	3.18
515.0	510.0	0.000	8	-24.04	4.64
517.0	512.0	0.000	7	-26.50	6.10
519.0	514.0	0.000	6	-28.96	7.56
521.0	516.0	0.000	5	-31.42	9.02
523.0	518.0	0.000	4	-33.88	10.48
525.0	520.0	0.000	3	-36.34	11.94
527.0	522.0	0.000	2	-38.80	13.40
529.0	524.0	0.000	1	-41.26	14.86



COMPANY BHP PETROLEUM  
FIELD WILDCAT  
WELL ERIC THE RED-1  
COUNTRY AUSTRALIA

