

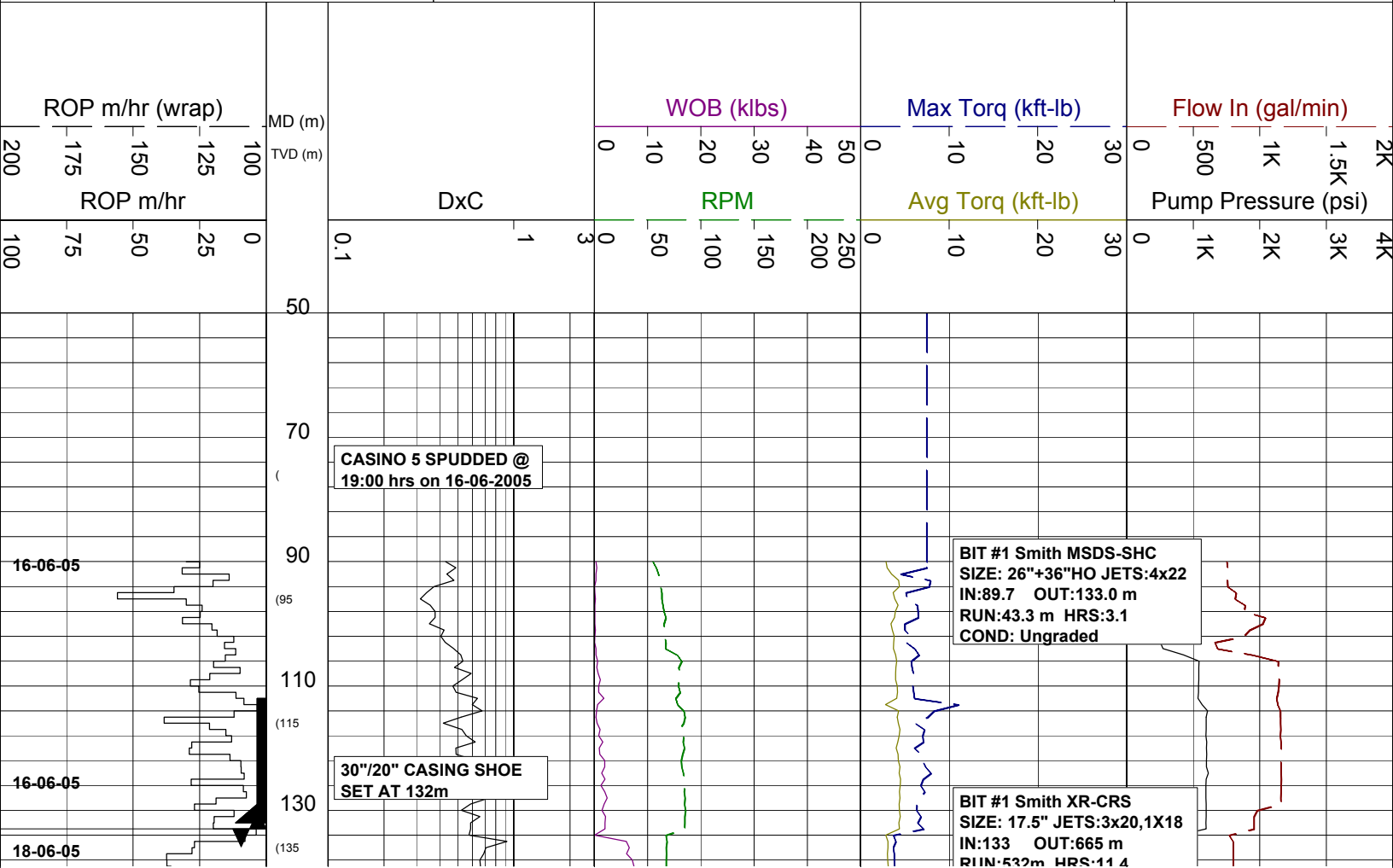
DRILLING DATA PLOT

CASINO 5

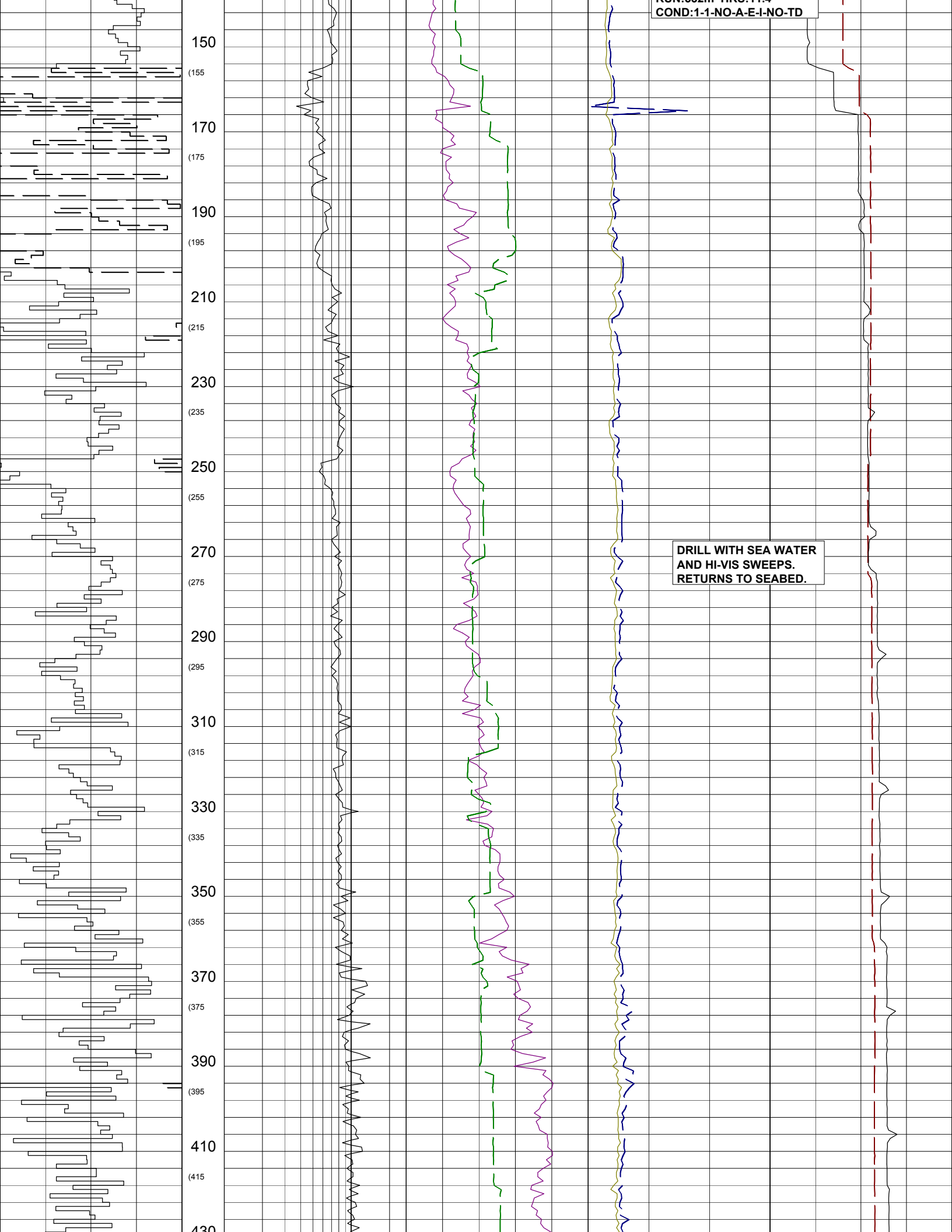
SCALE : 1 \ 1000

Operator : SANTOS LTD Country : AUSTRALIA Basin : OTWAY Permit : VIC P-44 Well Type : VERTICAL PILOT Rig Name : OCEAN PATRIOT	POSITION Latitude : 38°47'43.68"S Longitude : 142°44'44.60"E RT-LAT (m) : 21.5 RT-Seabed (m) : 89.7	CASING 762/508mm (30"/20") Shoe at: 132m 340mm (13.375") Shoe at: 655m 244mm (9.625") Shoe at: 1719.8m 194mm (7.625") Shoe at: 1800m	Spud Date : 16-06-2005 Total Depth Date : 28-06-2005 Total Depth (mRT) : 1806m T.V.D.SS : 1802m Final Status : Cased & Suspend
--	--	---	--

ABBREVIATIONS		LITHOLOGY LEGEND			ENGINEERING LEGEND				
MW MUD WEIGHT	NB NEW BIT		Limestone		Conglomerate		Mica		Deviation Survey
FV FUNNEL VISCOSITY	RR RERUN BIT		Coal		Calcilutite		Ferrous		Wiper Trip
PV PLASTIC VISCOSITY	CB CORE BIT		Clay		Carb. Siltstone		Chert		SWC (rec)
YP YIELD POINT	WOB WEIGHT ON BIT		Siltstone		Calc. Siltstone		Calcareous		SWC (unrec)
FC FILTER CAKE	RPM REVS PER MINUTE		Med Sandstone		Pyrite		Dolomitic		Casing Shoe
SOL SOLIDS	FLC FLOW CHECK		Coarse Sandstone		Siderite		Carbonaceous		Bit Trip
WL FILTRATE	CR CIRCULATE RETURNS		Fine Sandstone		Glauconite		Lithoclast		Core
SD SAND-%	PR POOR RETURNS		Marl		Feldspar		Breccia		DST
S SALINITY-PPM	NR NO RETURNS								
RM MUD RESISTIVITY	BG BACKGROUND GAS								
RMF MUD FILTRATE	TG TRIP GAS								
C CARBIDE TEST	STG SHORT TRIP GAS								
LAT LOGGED AFTER TRIP	CG CONNECTION GAS								
DS DEVIATION SURVEY	SG SWAB GAS								
SWC SIDE-WALL CORE	SVG SURVEY GAS								



COND:1-1-NO-A-E-I-NO-TD



150

(155)

170

(175)

190

(195)

210

(215)

230

(235)

250

(255)

270

(275)

290

(295)

310

(315)

330

(335)

350

(355)

370

(375)

390

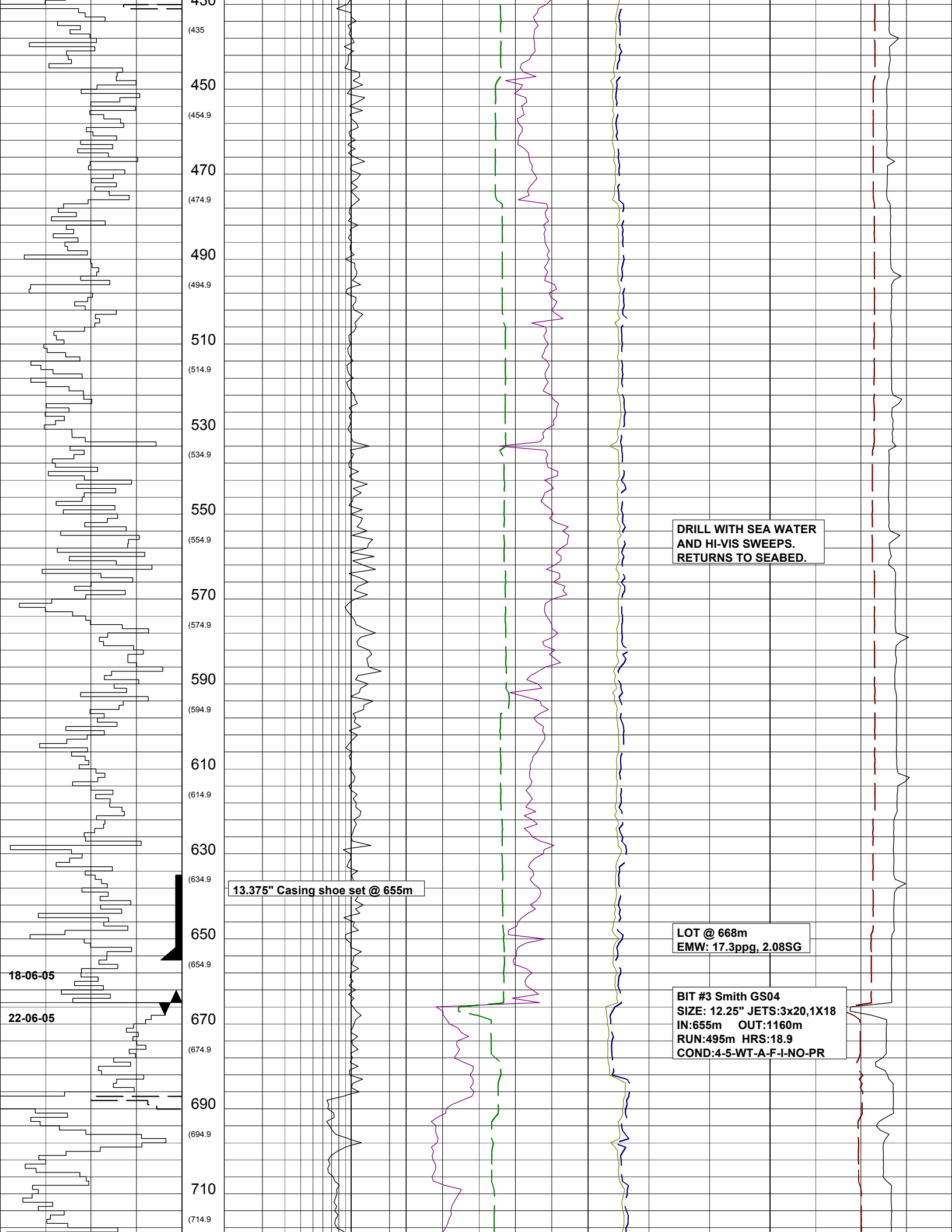
(395)

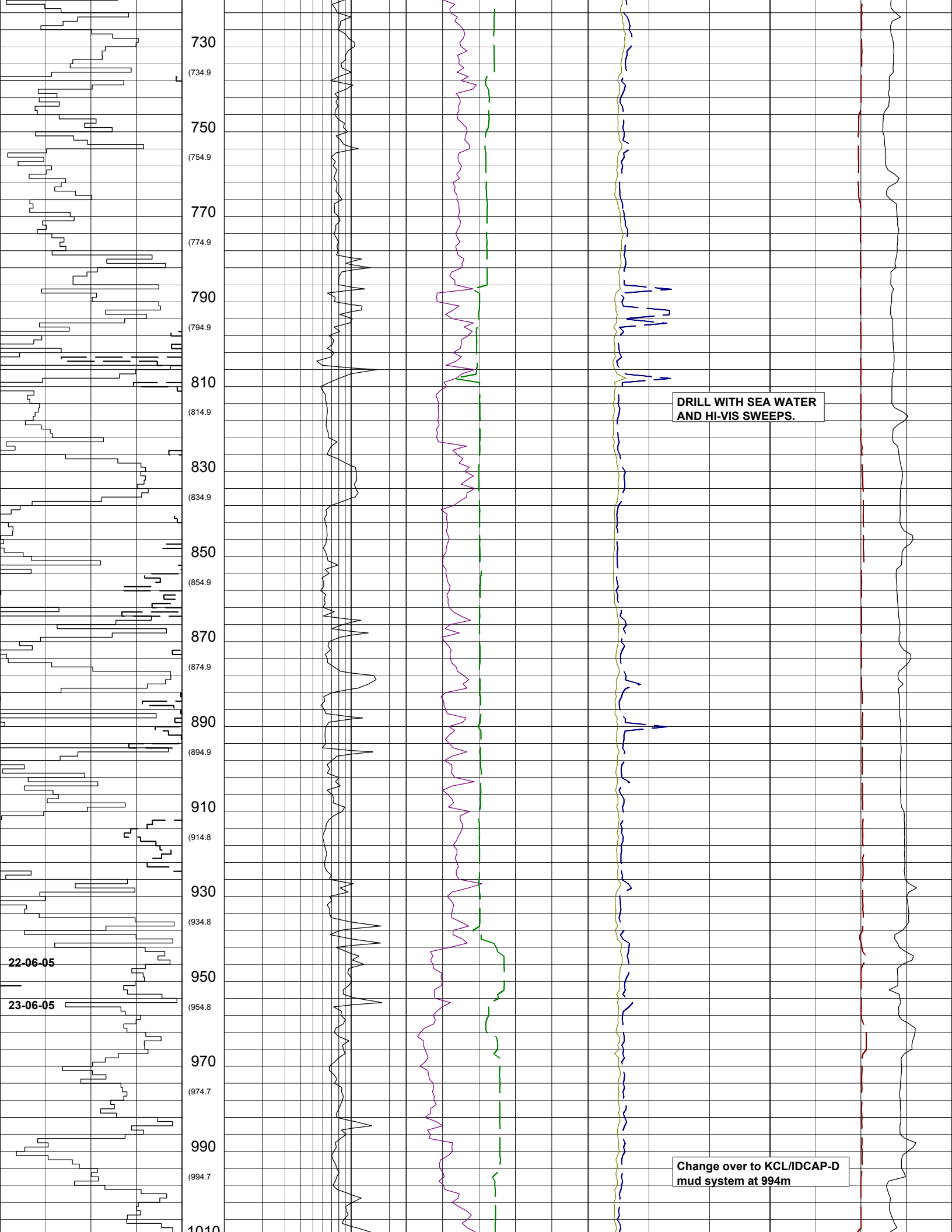
410

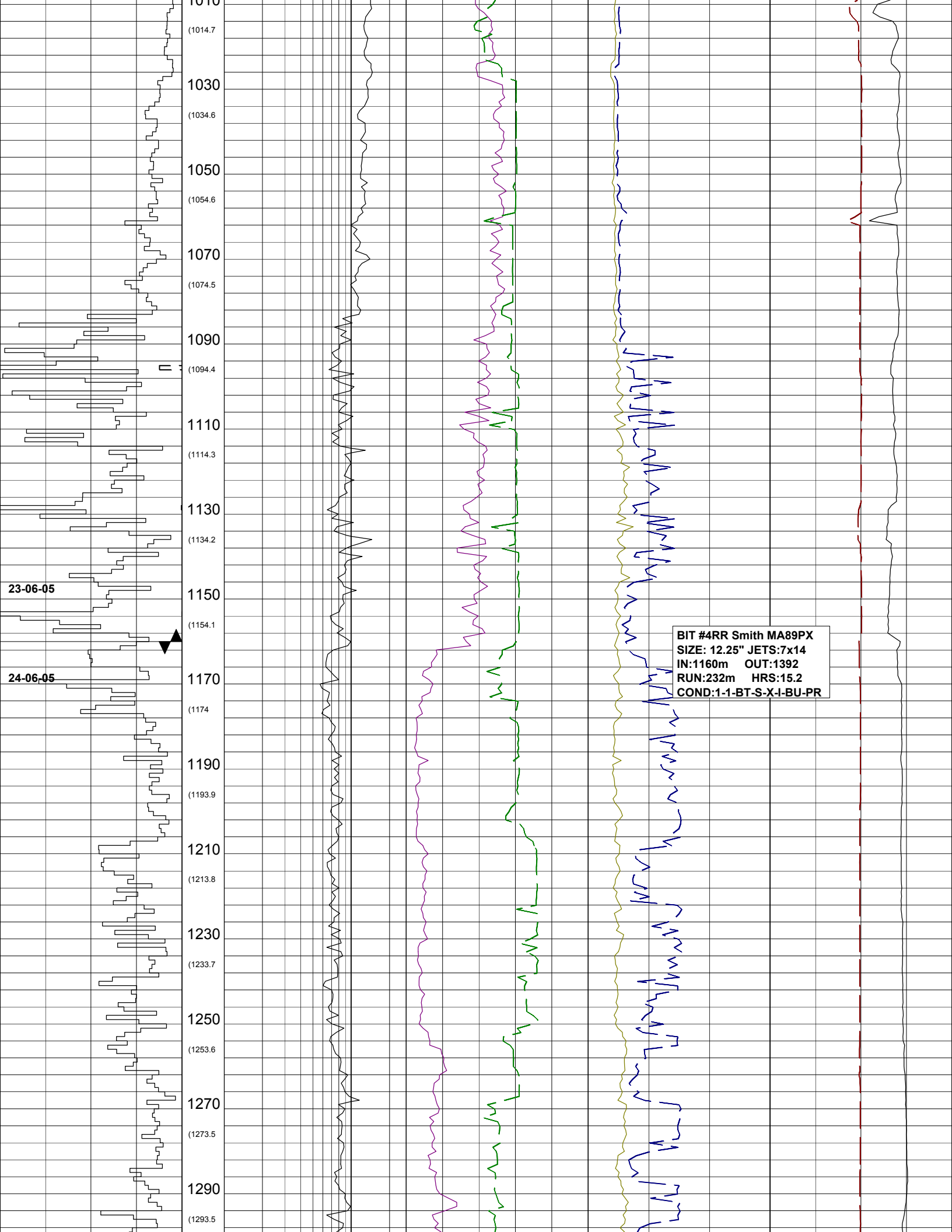
(415)

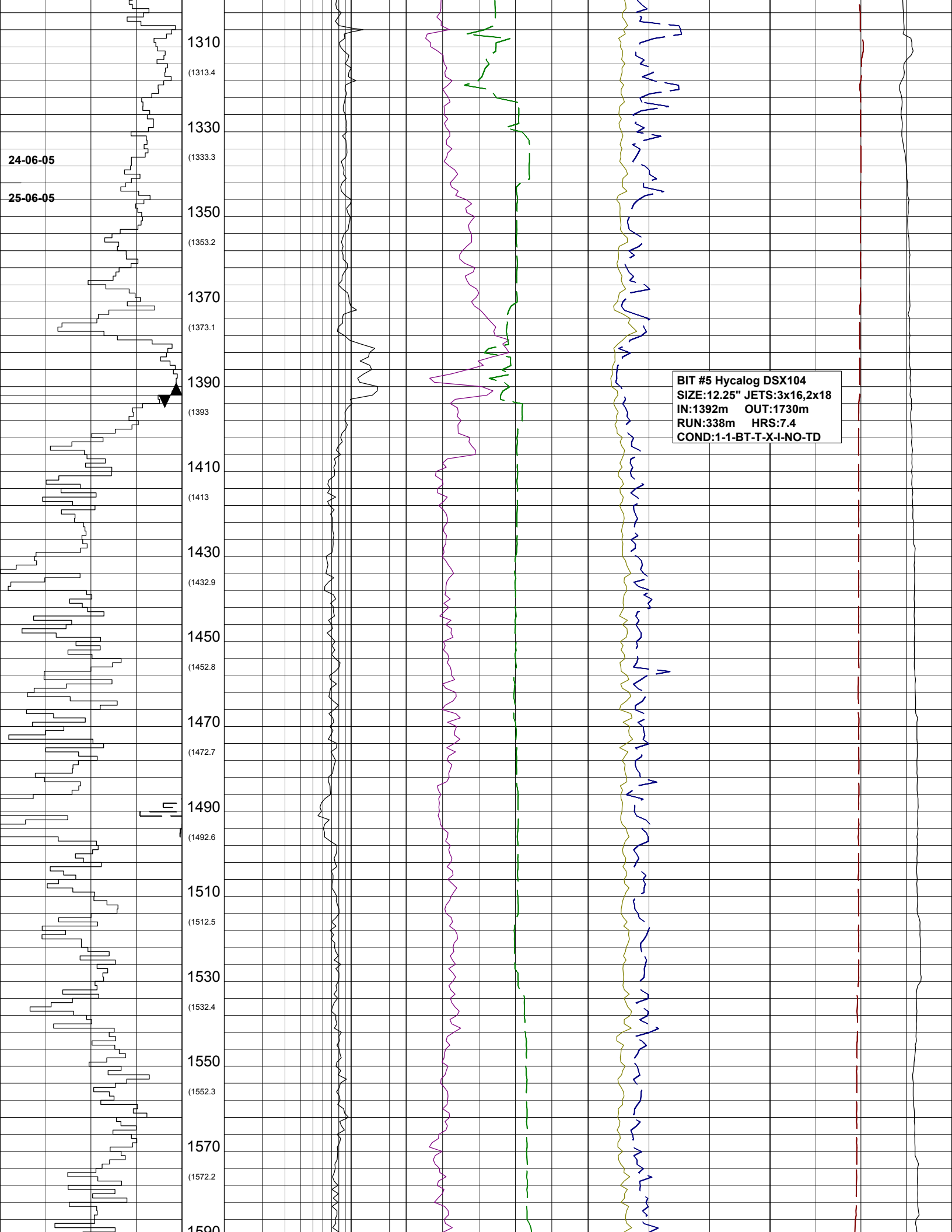
430

**DRILL WITH SEA WATER
AND HI-VIS SWEEPS.
RETURNS TO SEABED.**









1310

(1313.4)

1330

(1333.3)

1350

(1353.2)

1370

(1373.1)

1390

(1393)

1410

(1413)

1430

(1432.9)

1450

(1452.8)

1470

(1472.7)

1490

(1492.6)

1510

(1512.5)

1530

(1532.4)

1550

(1552.3)

1570

(1572.2)

1590

24-06-05

25-06-05

BIT #5 Hycalog DSX104
SIZE:12.25" JETS:3x16,2x18
IN:1392m OUT:1730m
RUN:338m HRS:7.4
COND:1-1-BT-T-X-I-NO-TD

