

BASIN GIPPSLAND
 STATE VICTORIA
 LOCATION BASS STRAIT
 WELL WRASSE NO.1
 COMPANY ESSO AUSTRALIA LTD

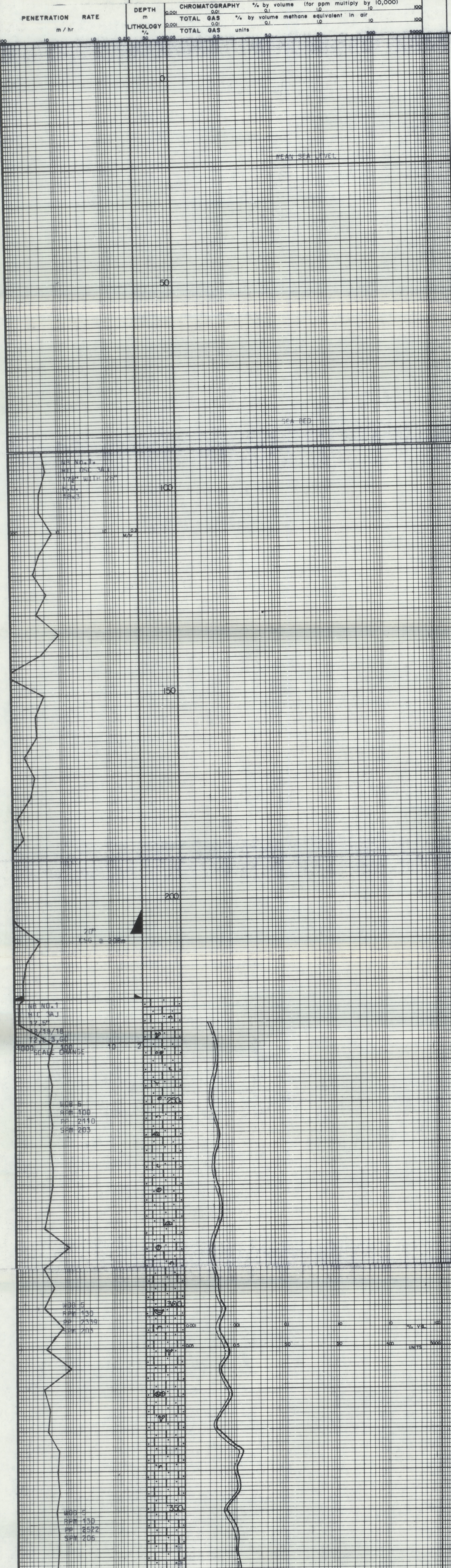
SPUD DATE 27 OCTOBER 1983 TOTAL DEPTH 2984 M
 LOGGING STARTED 29 OCTOBER 1983 @ 224 M
 LOGGING FINISHED 20 NOVEMBER 1983 @ 2984 M

DRILLING CONTRACTOR SSSDC
 RIG # SOUTHERN CROSS
 REMARKS: ALL DEPTHS ARE DRILLER'S, AND MEASURED IN METRES FROM R.K.B.
 SCALE 1/500
 R.K.B. TO SEA LEVEL 21m
 SEA BED 65m
 LOGGING PERSONNEL: B.G.B.P.P.E.D.

THE WELL NAME, LOCATION, AND BOREHOLE REFERENCE DATA WERE FURNISHED BY THE CUSTOMER.

LEGEND

| ABBREVIATIONS | ROCK TYPES | LITHOLOGY | ACCESSORIES |
|---|---|--|---|
| <p>CRD CORED CG CONNECTION GAS CK FILTER CAKE CO CIRCULATED OUT CI SALINITY PPM CL- DF DERRICK FLOOR DST DRILL-STEM TEST DS DIRECTIONAL SURVEY DC DEPTH CORRECTION EST ESTIMATED F FILTRATE, API, CC'S F/T FLOWLINE TEMP G & OCM GAS AND OIL CUT MUD GCM GAS CUT MUD SCW GAS CUT WATER GL GROUND LEVEL KB KELLY BUSHING LAT LOGGED AFTER TRIP NB NEW BIT NR NO RETURNS NCB NEW CORE BIT PERF PERFORATED PP PUMP PRESSURE RPM ROTARY SPEED RT ROTARY TABLE RM MUD RESISTIVITY, OHM-METER SO SHOW OF OIL SO & G SHOW OF OIL AND GAS SO & W SHOW OF OIL AND WATER SPM PUMP STROKES S/T SUCTION TEMP T.D. TOTAL DEPTH TG TRIP GAS V VISCOSITY, API SECONDS W WEIGHT OF MUD WOB WEIGHT ON BIT</p> | <p>CLAYSTONE SHALE MUDSTONE SILTSTONE SANDSTONE CONGLOMERATE COAL MARL LIMESTONE M - MICRITE G - GRAIN DOLOMITE ANHYDRITE HALITE GYPSUM BENTONITE VOLCANIC IGNEOUS METAMORPHIC</p> | <p>QUARTZ FELDSPAR (ARKOSIC) LITHIC OR ROCK FRAGMENTS PYRITE SIDERITE CHERT (LT. & DK.) MICA FORAM BENTHONIC + PLANKTONIC + TUFACEOUS</p> | <p>GLAUCONITE CARBONACEOUS MATTER PLANT REMAINS BENTONITE CLAYEY CALCITIC DOLOMITIC FOSSIL, GENERAL SILICEOUS</p> |
| | | <p>HYDROCARBON INDICATIONS</p> <p>Oil Stain Fluorescence Hydrocarbon Cut Gas Show</p> | <p>GAS CURVES LEGEND</p> <p>Total Gas Methane C1 Ethane C2 Propane C3 Iso-Butane & Normal Butane C4 Pentane C5 Hexane C6</p> |



RKB

MEAN SEA LEVEL

SEA BED

CEMENT CONTAMINATED

CALIBRATION OF GS DETECTORS.
 CALCARENITE: wht-off gy, drk gy, tr blk s, calc matter, frm, -sub ang, fossils-w occ orng-brn-blk, r -ed sh frags, coral -ags, ostracods, bry -ams, tr lse qtz g tr forams, orde