

GEOGRAM*

(Synthetic Seismogram)

Company: ESSO AUSTRALIA LTD
 Well: WHALESHARK 1
 Field: WILDCAT
 Country: AUSTRALIA
 Reference No: 560821 Interval: 2847.00 to 1482.00
 Date Logged: 17-08-92 Date Processed: 27-8-92
 Location: 88 23 45.8' S 148 43 26.6' E
 Elevations: KB: 22.00 DF: 21.70 GL: -716.9969
 Permanent Datum: MSL Depth Units: METRES

LOG INFORMATION

FIELD RECORDING Operator: RIMWATTA Location: Program Version: 32.4
 COMPUTATION Analyst: T. EDWARDS Core: SVI Baseline: 20.0
 Logging Datum: 22.00
 Seismic Reference Datum: 01.00
 Sonic Calibration By Check Shots: YES Sonic Edited By Analyst: YES
 Two-Way Time Sample Interval: 2 ms Environment: offshore

True Vertical Depth Corrections Applied:
 Source of True Vertical Depth Data:
 Maximum Hole Deviation:

| Run | Date | Type | Strip | Depth | Corrected | True | Strip | Depth |
|-----|----------|------|-------|---------|-----------|---------|-------|---------|
| | | | Top | Bottom | Depth | Depth | Top | Bottom |
| 1 | 17-08-92 | SVI | 0.00 | 2847.00 | 2847.00 | 2847.00 | 0.00 | 2847.00 |
| 2 | 14-08-92 | SVI | 19.8 | 1482.00 | 1482.00 | 1482.00 | 19.8 | 1482.00 |

GEOGRAM MODEL ASSUMPTIONS
 Equal time slice model of horizontal plane layers
 Pure acoustic waves at normal incidence.
 No intrinsic attenuation.

POLARITY
 An upgoing wave, reflected by an increase in acoustic impedance with depth, is displayed as a white trough under normal polarity.

SIGNATURES
 All signatures displayed in the Geogram results correspond to a wavelet convolved with a reflection coefficient of 0.5 (A decrease in acoustic impedance with depth).

REMARKS

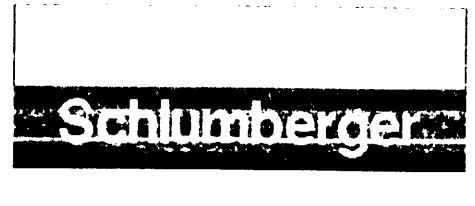
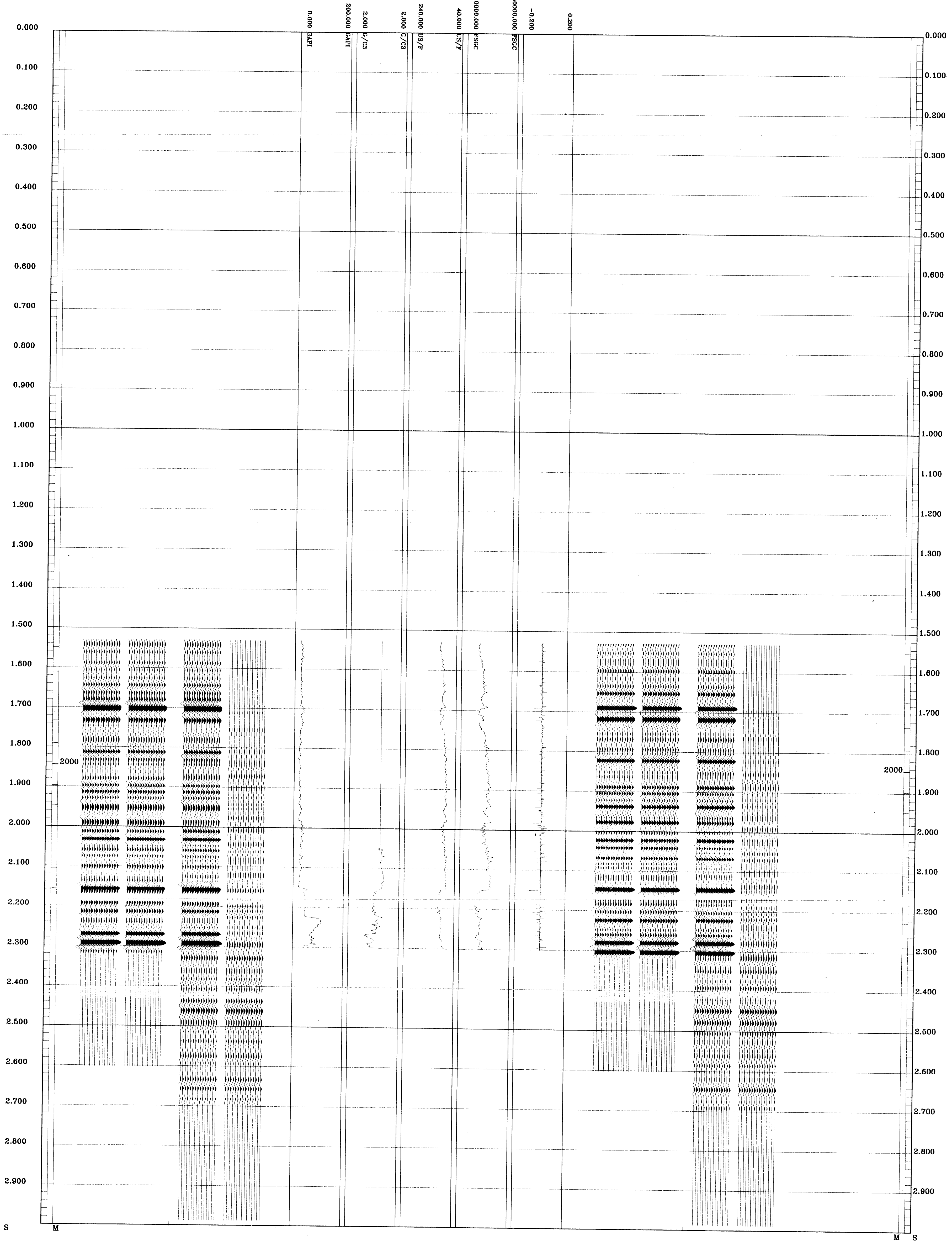
The well name, location and borehole reference data were furnished by the customer

All interpretations are opinions based on inferences from electrical or other measurements and we cannot, and do not guarantee the accuracy or correctness of any interpretations, and we shall not, except in the case of gross or willful negligence on our part, be liable or responsible for any loss, costs, damages or expenses incurred or sustained by anyone resulting from any interpretations made by any of our officers, agents or employees. These interpretations are also subject to Clause 4 of our General Terms and Conditions as set out in our current Price Schedule.

CLIENT = ESSO AUSTRALIA LTD
 FIELD = WILDCAT
 WELL = WHALESHARK 1

**** GEOGRAM ****
45 HERTZ ZERO PHASE
RICKER WAVELET WITH -90 DEG. PHASE SHIFT
WHALESHARK-1

| |
|--|
| MULTIPLES ONLY REVERSE POLARITY |
| PRIMARIES AND MULTIPLES REVERSE POLARITY |
| PRIMARIES WITH TRANSMISSION LOSS REVERSE POLARITY |
| PRIMARIES REVERSE POLARITY |
| REFLECTION |
| ACOUSTIC IMPEDANCE |
| SONIC |
| DENSITY |
| GAMMA RAY |
| MULTIPLES ONLY NORMAL POLARITY |
| PRIMARIES AND MULTIPLES NORMAL POLARITY |
| PRIMARIES WITH TRANSMISSION LOSS NORMAL POLARITY |
| PRIMARIES NORMAL POLARITY |



COMPANY ESSO AUSTRALIA LTD
 FIELD WILDCAT
 WELL WHALESHARK 1
 COUNTRY AUSTRALIA