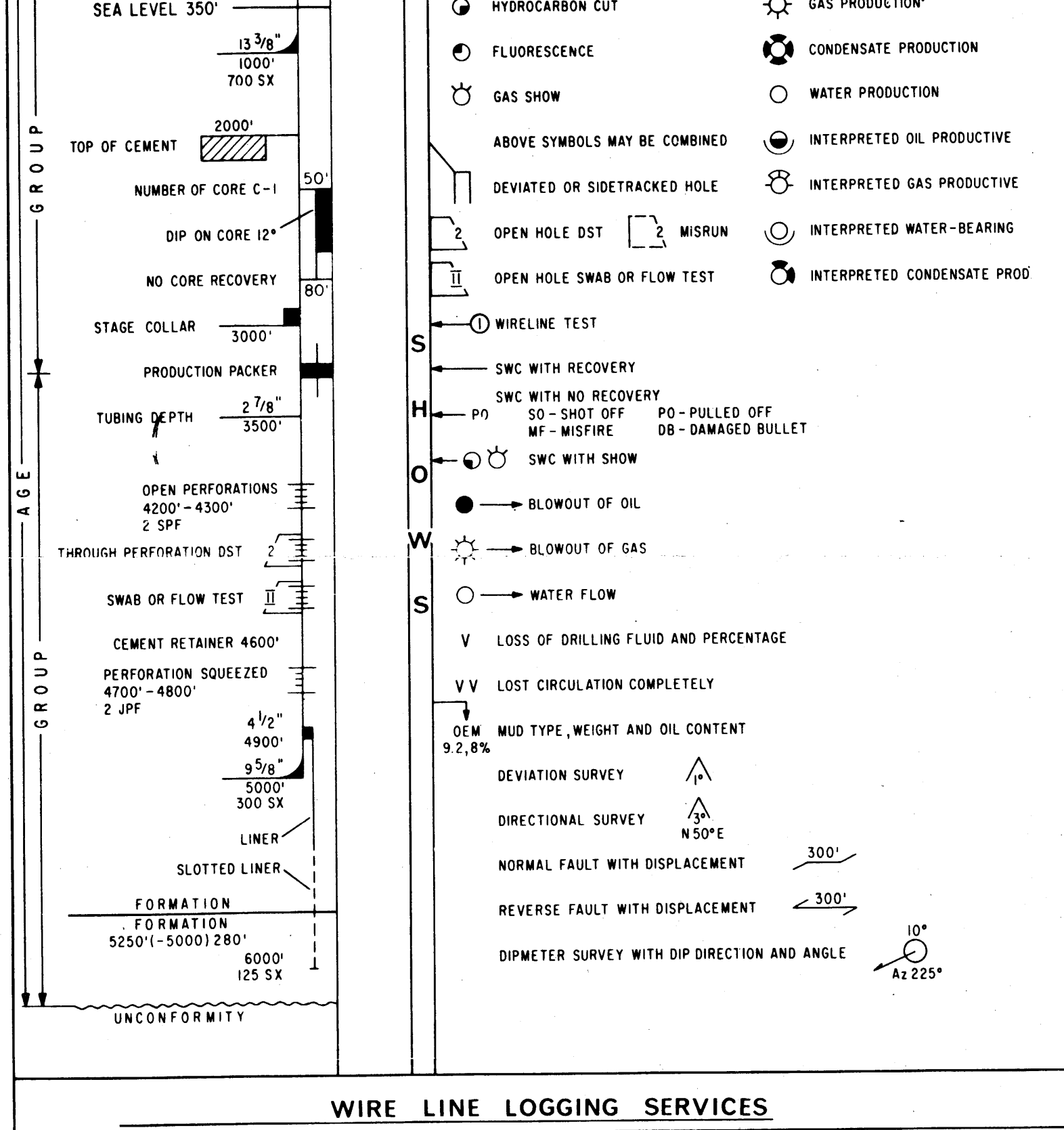


**WELL COMPLETION LOG**  
**WAHOO-1**



CONCESSION: VIC P/1 STATE: VICTORIA BASIN: GIPPSLAND  
 LOCATION: Lat. 148° 44' 48" Long. 38° 01' 42"  
 ELEVATION: G.L. MSL. K.B. 31 WATER DEPTH: 245'  
 SPUDDED: May 27, 1969 COMPLETED: June 12, 1969 DRILLED BY: GLOBAL MARINE  
 CLASSIFICATION: WILDCAT STATUS: PLUGGED AND ABANDONED  
 TOTAL DEPTH: 2446 PLUGGED BACK T.D.: 397

CASING AND TUBING			PLUGS		PERFORATIONS				
SIZE	SET AT	SX. CMT.	FORMATION	FROM	TO	SX. CMT.	FROM	TO	No. FT.
30"	380	400		397	497	40			
13 3/8"	744	1100		1289	1645	100			
9 5/8"	1390								



**WIRE LINE LOGGING SERVICES**

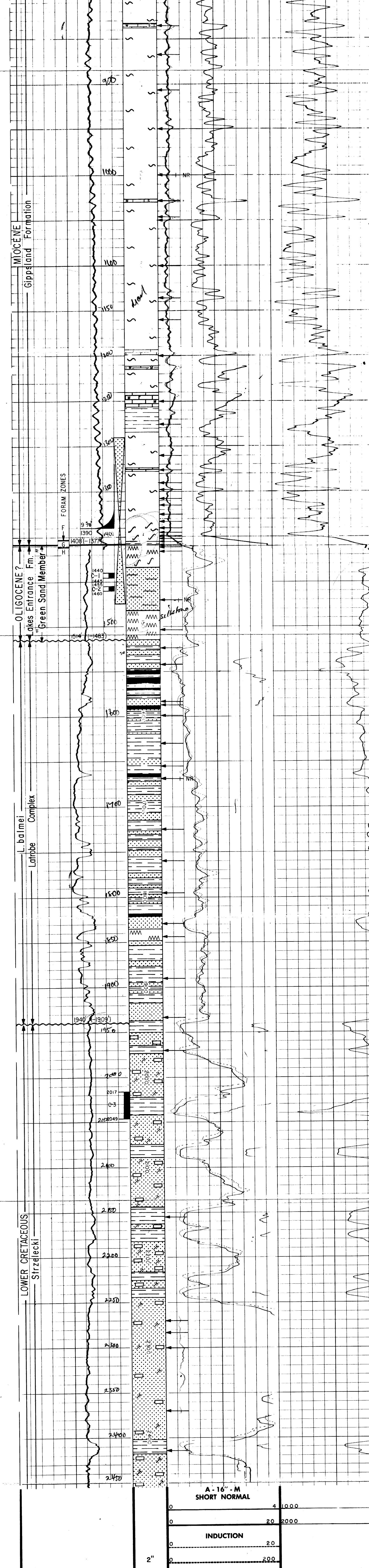
LOG	INTERVAL	LOG	INTERVAL
INDUCTION ELECTRICAL	1389-2433		
BOREHOLE SONIC CALIPER GAMMA RAY	1389-2433		
FORMATION DENSITY	1389-2433		
CONTINUOUS SIDEWALL CORES	770-2413		
WELL VELOCITY SURVEY	1125-2400		
CONTINUOUS DIPMETER	1389-2433		

Run No.	Depth (m)	1	2	1	2
Date		6 June 1969	10 June 1969		
First Reading		1417	2433		
Last Reading		744	1417		
Interval Measured		673	1016		
Casing Logger		744	1389		
Casing Driller		744	1389		
Depth Reached		1418	2434		
Bottom Driller		1425	2446		
Mud Nature		SEAWATER	SPERSENE		
Density		11.6	40		
Mud Viscosity		0.65	60		
Mud Resistivity BHT		0.15	100		
pH Fluid Loss		9.7	10.7		
Origin of Sample		FLOWLINE	FLOWLINE		
Rmt		at	at		
Rmc		at	at		
Bit Size		17 1/2" to 800	8 1/2" to 2446		
Casing Size		13 3/8" to 744	9 5/8" to 1390		
Op Rig Time		2035 SAL	2035 SAL		
Truck No		2035 SAL	2035 SAL		
Recorded by		B. THOMSON	B. THOMSON		
Witness		R. HICKS	H. LARMORE		

LOGGING DATA		EQUIPMENT DATA	
Run No.	1	2	
Type of Sonde	6FF40	6FF40	
S/N Spacing	A-16"-M	A-16"-M	
Stand off			
S/B H			
Run No.	1	2	
Panel	IRP-H733	IRP-H733	
Cartridge	IRC-F708	IRC-F708	
Sonde	IRS-M581	IRS-M581	
Test Loop			

SPONTANEOUS POTENTIAL millivolts	D E P T H S	RESISTIVITY ohms - m <sup>2</sup> /m		CONDUCTIVITY millimhos - m/m <sup>2</sup> = 1000 / ohms - m <sup>2</sup> /m	
		16" NORMAL	INDUCTION	INDUCTION	
	0		4	1000	0
	0		20	2000	1000
	0				
	0		20		
	0		200		

**INTERPRETATIVE**



COMPANY	ESSO AUSTRALIA	SCHL	FR 2.4.3.3
WELL	WAHOO 1	SCHL	TD 2.4.3.4
FIELD	WILDCAT	DRLR	TD 2.4.4.6
COUNTY	AUSTRALIA	Elev.	KB 31
STATE	VICTORIA	DF	3.0
		GL	0