

Figure 5A Orange fluorescing oil inclusions on healed fractures in detrital quartz. The orange fluorescence is characteristic of oil sourced from rocks at the onset of oil generation. Veilfin-1, 2030-35 m ctgs sample, dark field image under UV illumination (10 μm = 7.1 mm).

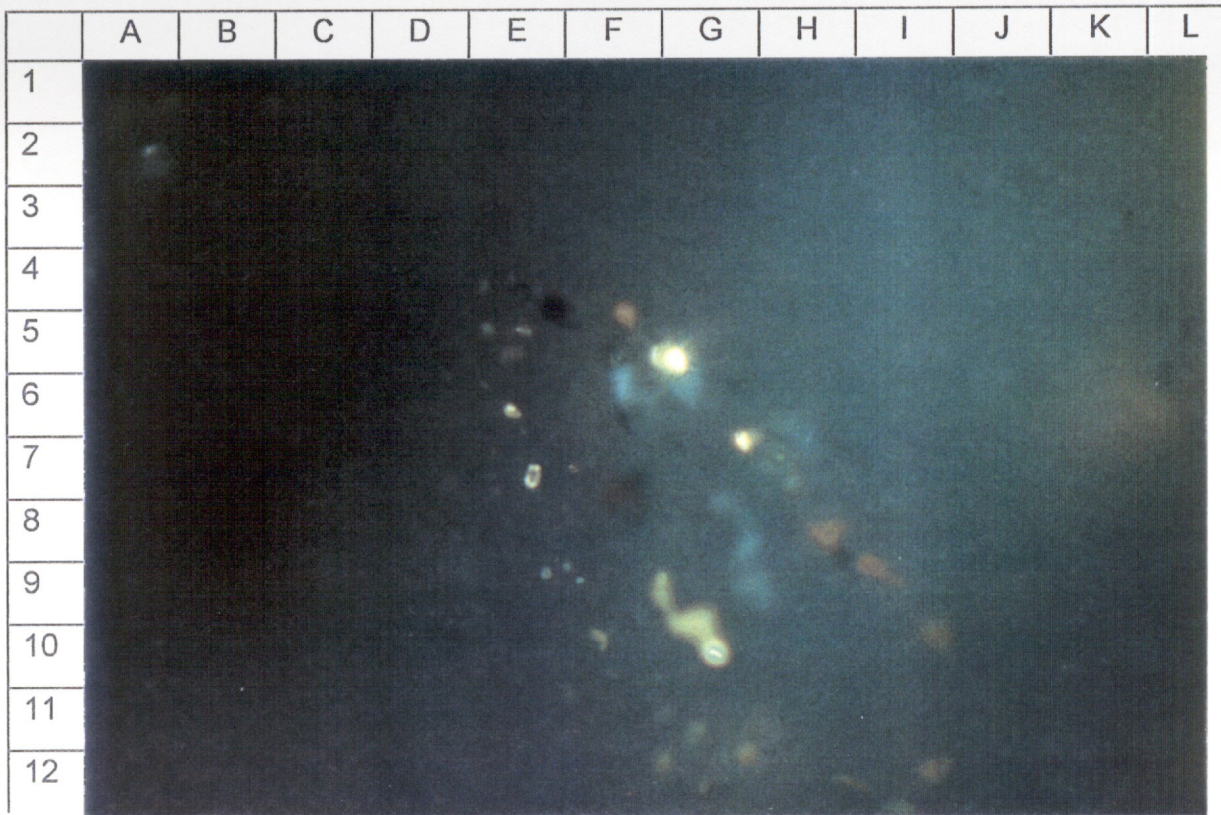


Figure 5B Blue fluorescing oil inclusions on fractures in detrital quartz. The blue fluorescence is attributed to oil generated from source rocks at peak oil generation. Veilfin-1, 3405-10 m ctgs sample, dark field image under UV illumination (100 μm = 17.5 mm).

