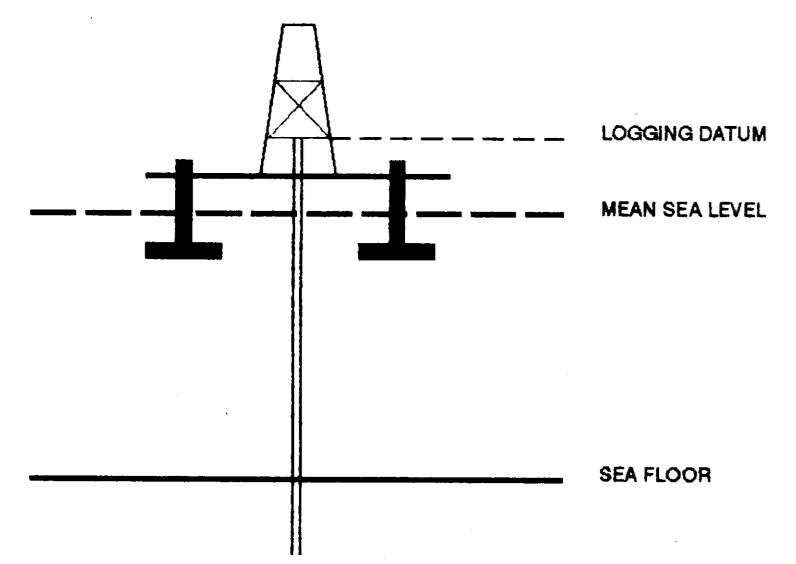


VERTICAL SEISMIC PROFILE

ZERO OFFSET VSP PLOT 4
WAVESHAPING DECONVOLUTION

Company: ESSO AUSTRALIA LTD
Well: TURRUM-6
Field: TURRUM
Country: AUSTRALIA
Reference No: SYJ-561162/561163 Interval: 2836.9998 to 140.00
Date Logged: 14 OCT. 1995 Date Processed: 20 OCT 1995
Location: 038 14' 11.108" S 148 10' 24.946" E
Elevations: KB: 25.00 DF: 24.70 GL: -60.00
Permanent Datum: MSL Depth Units: METRES
FIELD RECORDING: Engineer: R.JONSON Location: Program Version: 700-427
COMPUTATION: Analyst: S.TOHERKASHNEV Centre: SYJ Baseline: 20.6

ELEVATION ABOVE MEAN SEA LEVEL
Logging Datum: 25.00
Seismic Reference Datum: 0.00



Total Number of Levels: 86
Depth Reference: SRD
Time Reference: SRD

Run	Date	Tool Type	Bit Size/Depth	Casing Size/Depth	Top Depth	Bottom Depth
1	26-09-95	DLL-LDL-GR	17.5 IN	30.0 IN	118 M	649 M
2	12-10-95	DLL-LDL-GR	12.2 IN	13.3 IN	648.5 M	2840 M

VSP Run	Date	Gun Offset	Hydro Offset	Gun Elevation	Hydro Elevation	Gun Azimuth	Hydro Azimuth
1	14-10-95	50 M	50 M	5 M BELOW MSL	10 M BELOW MSL	220 DEG	220 DEG

REMARKS
FOLD HERE

All interpretations are strictly based on information provided by other measurements and we cannot, and do not guarantee the accuracy or completeness of any interpretations, and we shall not accept in the case of those measurements made by any of our officers, agents or employees. These interpretations are also subject to change if our Office Terms and Conditions as set out in our current Price Schedule.

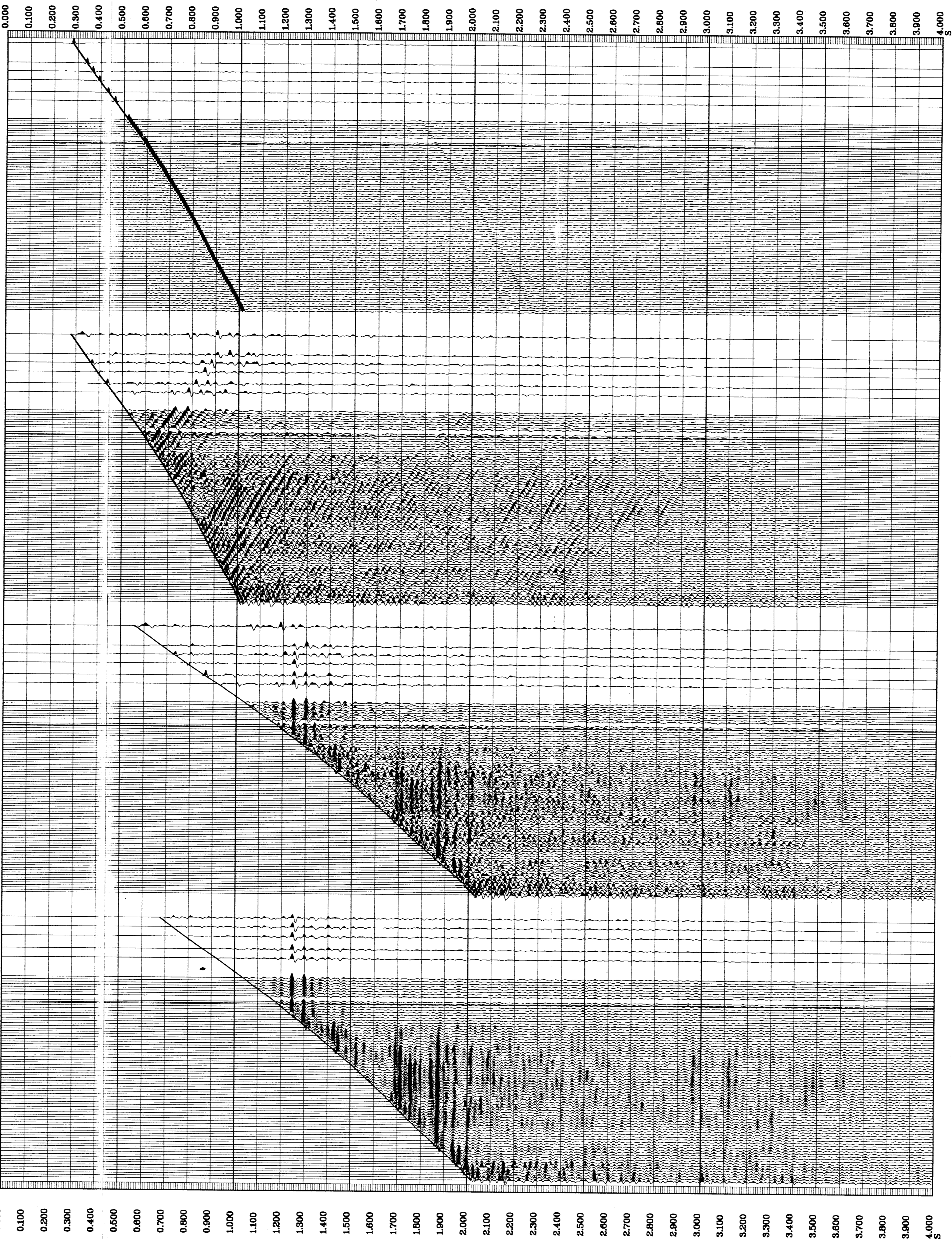
*** WAVESHAPING ***
ZERO PHASE
DOWNGOING WAVEFIELD
PROCESSING SEQUENCE:
MEDIAN STACK APPLIED
STATIC CORRECTION TO MSL: 6.56 MS
BAND PASS FILTER : 5-70 HZ
NORMALISATION GATE : 100 MS
TIME VARYING GAIN : (T/T0)**1.00
7 LEVEL MEDIAN ESTIMATE OF
DOWNGOING WAVEFIELD
5-70 HZ WAVESHAPING DECONVOLUTION
VERTICAL SCALE : 10 CM/SEC
POLARITY (S.E.G.) : NORMAL
ONE WAY TIME

*** WAVESHAPING ***
ZERO PHASE
RESIDUAL WAVEFIELD
PROCESSING SEQUENCE:
MEDIAN STACK APPLIED
STATIC CORRECTION TO MSL: 6.56 MS
BAND PASS FILTER : 5-70 HZ
NORMALISATION GATE : 100 MS
TIME VARYING GAIN : (T/T0)**1.00
DOWNGOING WAVEFIELD SUBTRACTION
5-70 HZ WAVESHAPING DECONVOLUTION
VERTICAL SCALE : 10 CM/SEC
POLARITY (S.E.G.) : NORMAL
ONE WAY TIME

*** WAVESHAPING ***
ZERO PHASE
RESIDUAL WAVEFIELD
PROCESSING SEQUENCE:
MEDIAN STACK APPLIED
STATIC CORRECTION TO MSL: 6.56 MS
BAND PASS FILTER : 5-70 HZ
NORMALISATION GATE : 100 MS
TIME VARYING GAIN : (T/T0)**1.00
DOWNGOING WAVEFIELD SUBTRACTION
5-70 HZ WAVESHAPING DECONVOLUTION
VERTICAL SCALE : 10 CM/SEC
POLARITY (S.E.G.) : NORMAL
TWO WAY TIME

*** WAVESHAPING ***
ZERO PHASE
ENHANCED UPGOING WAVEFIELD
PROCESSING SEQUENCE:
MEDIAN STACK APPLIED
STATIC CORRECTION TO MSL: 6.56 MS
BAND PASS FILTER : 5-70 HZ
NORMALISATION GATE : 100 MS
TIME VARYING GAIN : (T/T0)**1.00
DOWNGOING WAVEFIELD SUBTRACTION
5-70 HZ WAVESHAPING DECONVOLUTION
5 LEVEL ENHANCED UPGOING WAVEFIELD
VERTICAL SCALE : 10 CM/SEC
POLARITY (S.E.G.) : NORMAL
TWO WAY TIME

RAW DEPTH M	TRANSIT TIME S	LEVEL NO
840.1	0.581	87
800.0	0.358	86
870.1	0.365	85
843.1	0.368	84
1039.0	0.431	83
1110.0	0.461	82
1290.0	0.528	80
1350.0	0.541	79
1400.0	0.557	78
1450.1	0.575	77
1480.1	0.586	76
1500.0	0.592	75
1520.0	0.598	74
1540.1	0.603	73
1560.0	0.608	72
1580.0	0.613	71
1600.0	0.618	70
1620.0	0.623	69
1640.1	0.628	68
1660.0	0.633	67
1680.0	0.638	66
1700.0	0.643	65
1720.0	0.648	64
1740.0	0.653	63
1760.0	0.658	62
1780.0	0.663	61
1800.0	0.668	60
1820.0	0.673	59
1840.1	0.678	58
1860.0	0.683	57
1880.0	0.688	56
1900.0	0.693	55
1920.0	0.698	54
1940.1	0.703	53
1960.0	0.708	52
1980.0	0.713	51
2000.0	0.718	50
2020.0	0.723	49
2040.1	0.728	48
2060.0	0.733	47
2080.0	0.738	46
2100.0	0.743	45
2120.0	0.748	44
2140.1	0.753	43
2160.0	0.758	42
2180.0	0.763	41
2200.0	0.768	40
2220.0	0.773	39
2240.1	0.778	38
2260.0	0.783	37
2280.0	0.788	36
2300.0	0.793	35
2320.0	0.798	34
2340.1	0.803	33
2360.0	0.808	32
2380.0	0.813	31
2400.0	0.818	30
2420.0	0.823	29
2440.1	0.828	28
2460.0	0.833	27
2480.0	0.838	26
2500.0	0.843	25
2520.0	0.848	24
2540.1	0.853	23
2560.0	0.858	22
2580.0	0.863	21
2600.0	0.868	20
2620.0	0.873	19
2640.1	0.878	18
2660.0	0.883	17
2680.0	0.888	16
2700.0	0.893	15
2720.0	0.898	14
2740.1	0.903	13
2760.0	0.908	12
2780.0	0.913	11
2800.0	0.918	10
2820.0	0.923	9
2840.1	0.928	8
2860.0	0.933	7
2880.0	0.938	6
2900.0	0.943	5
2920.0	0.948	4
2940.1	0.953	3
2960.0	0.958	2
2980.0	0.963	1
3000.0	0.968	0



COMPANY ESSO AUSTRALIA LTD
FIELD TURRUM
WELL TURRUM-6
COUNTRY AUSTRALIA

Schlumberger