

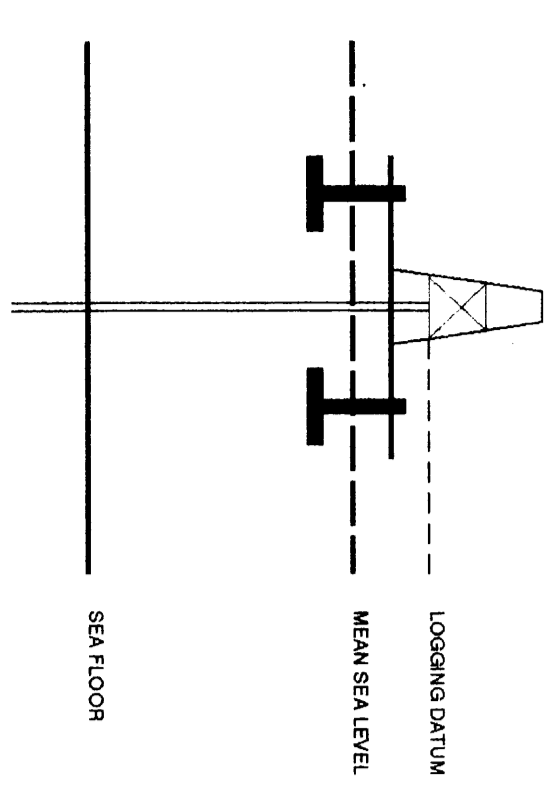
SEISMIC CALIBRATION LOG

(Adjusted Continuous Velocity Log)

ESSO AUSTRALIA LTD
TURRUM 4
OUTPOST
AUSTRALIA

Company: ESSO AUSTRALIA LTD
Well: TURRUM 4
Field: OUTPOST
Country: AUSTRALIA
Reference No: 560927 Interval: 2772.00 to 196.00
Date Logged: 10-09-92 Date Processed: 14-9-92
Location: 38 27' 8" S 148 26' 2" E
Elevations: KB: 23.00 DF: 22.70 GL: 43.00
Permanent Datum: MSL Depth Units: METRES

Logging Datum: 23.00
Seismic Reference Datum: 0.00
ELEVATION ABOVE MEAN SEA LEVEL
FIELD RECORDING: Engineer: M HEWES Location: Program Version: 32.4
COMPUTATION: Analyst: T. BOOMAN Centre: SVJ Baseline: 20.0

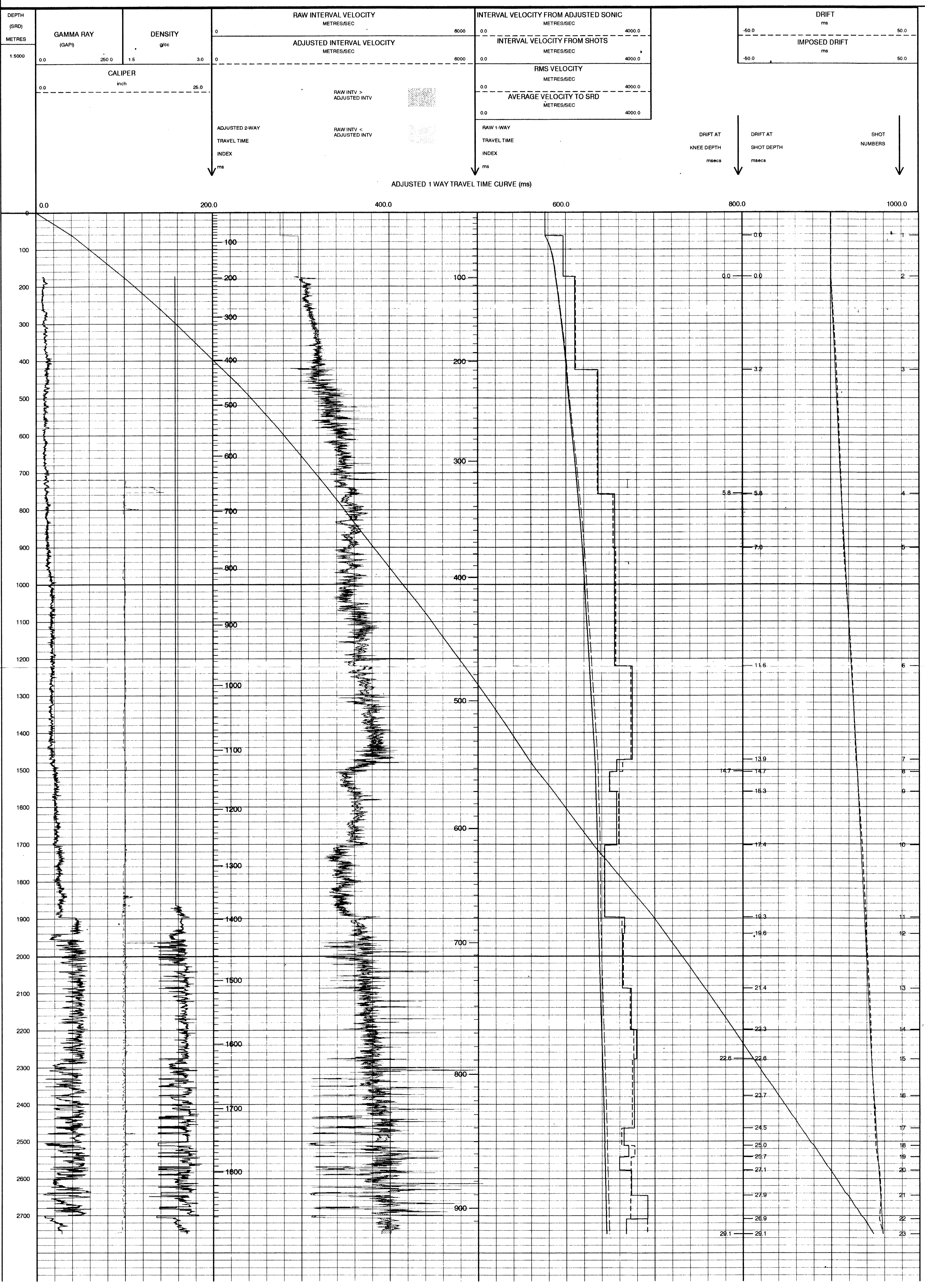


Total Number of Levels: 21
Depth Reference: SRD
Time Reference: SRD

Ref	Date	Tool Type	SRD Depth	Caliper Size	Top Depth	Bottom Depth
1	31-08-92	SLB			779 M	1421 M
2	10-09-92	SLB			2779 M	759 M

SRD: 10 M BELOW MSL
SRD: 17 M BELOW MSL

All interpretations are opinions based on inferences from electrical or other measurements and we cannot, and do not guarantee the accuracy or correctness of any interpretations, and we shall not, except in the case of gross or willful negligence on our part, be liable or responsible for any loss, costs, damages or expenses incurred or sustained by anyone resulting from any interpretations made by any of our officers, agents or employees. These interpretations are also subject to Clause 4 of our General Terms and Conditions as set out in our current Price Schedule.



COMPANY ESSO AUSTRALIA LTD
FIELD OUTPOST
WELL TURRUM 4
COUNTRY AUSTRALIA

