

**RAW AND STACKED  
RAW SHOTS**

ESSE AUSTRALIA LTD  
TURRUM #3 W.C.R. No. 7  
MILDCAT  
AUSTRALIA

COMPANY  
TURRUM #3 W.C.R. No. 7  
MILDCAT  
AUSTRALIA

LOCATION COORDINATES  
Easting: 41 25 2  
Northing: 4 40 0  
U.S. IN 30 00 0

COMPUTER CENTER: N. SANDERS  
NAME: H. SHERWOOD  
DATE: 20 APRIL 1985

CLIENT: ESSO AUSTRALIA LTD.  
FIELD: WILDCAT  
WELL: TURRUM #3

DATE: 20 APRIL 1985

TIME: 10:00 AM

NO. OF SHOTS: 100

NO. OF CHANNELS: 1

NO. OF TRACES: 100

NO. OF SEGMENTS: 1

NO. OF RECORDS: 100

NO. OF SAMPLES: 100

NO. OF POINTS: 100

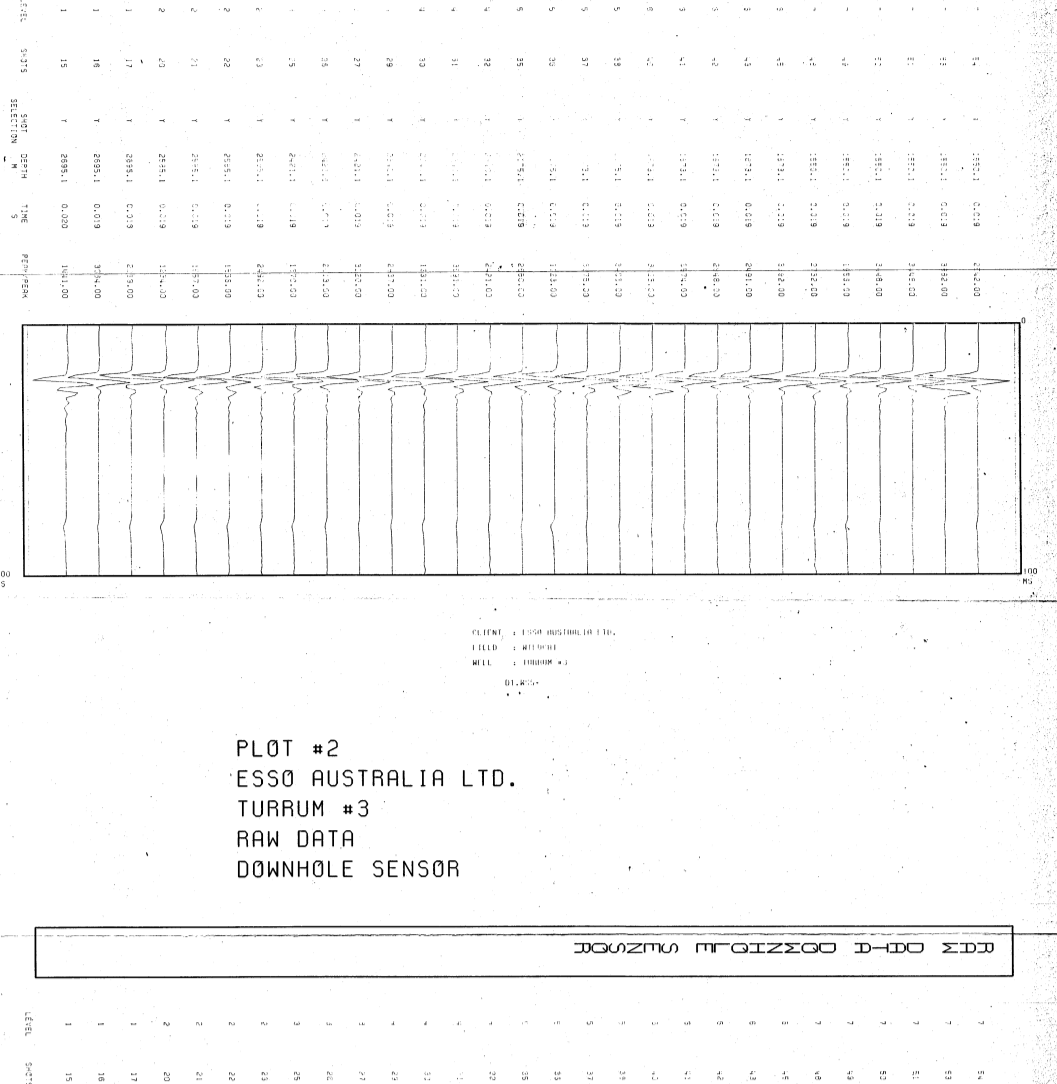
NO. OF SEGMENTS: 1

NO. OF RECORDS: 100

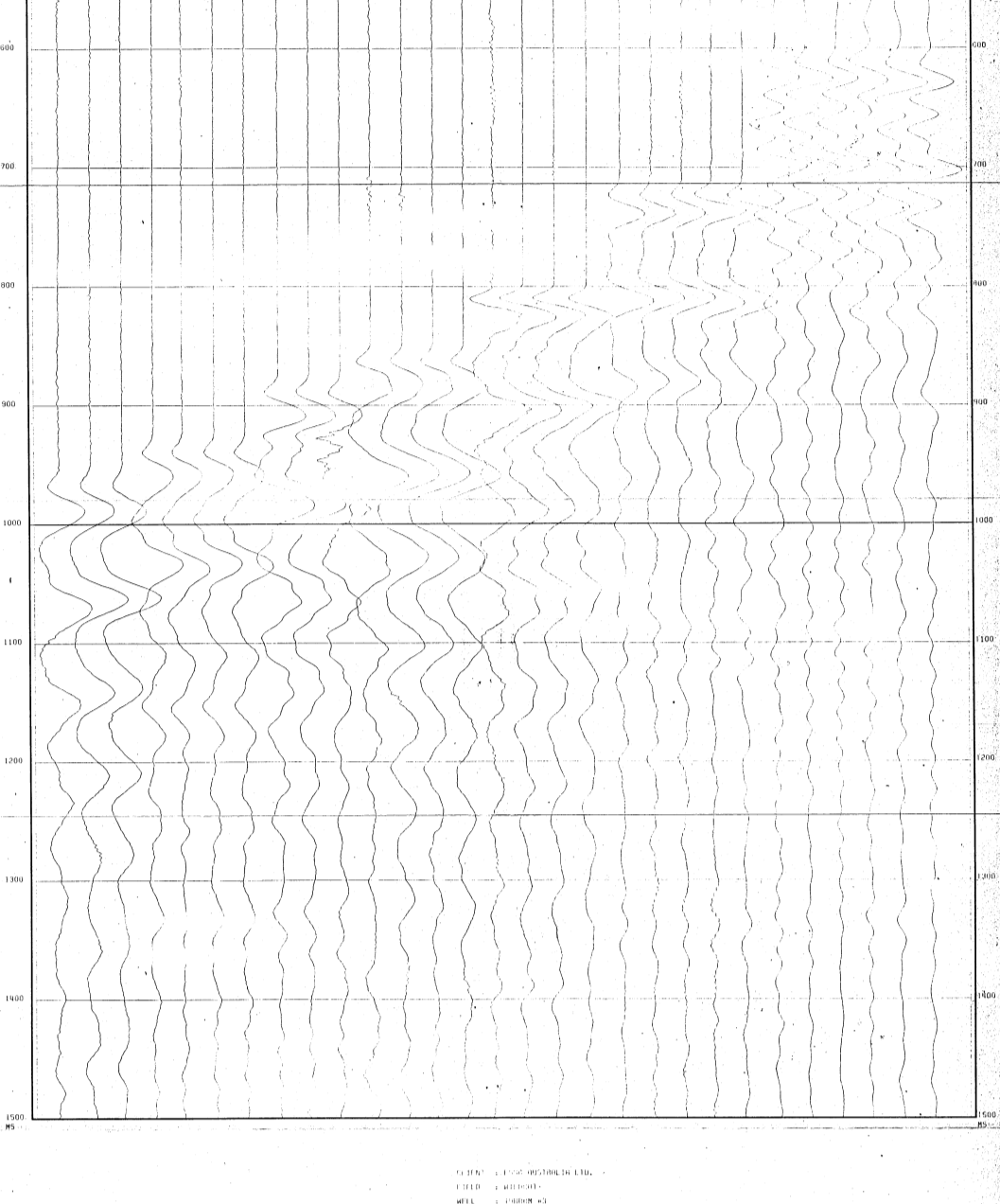
NO. OF SAMPLES: 100

NO. OF POINTS: 100

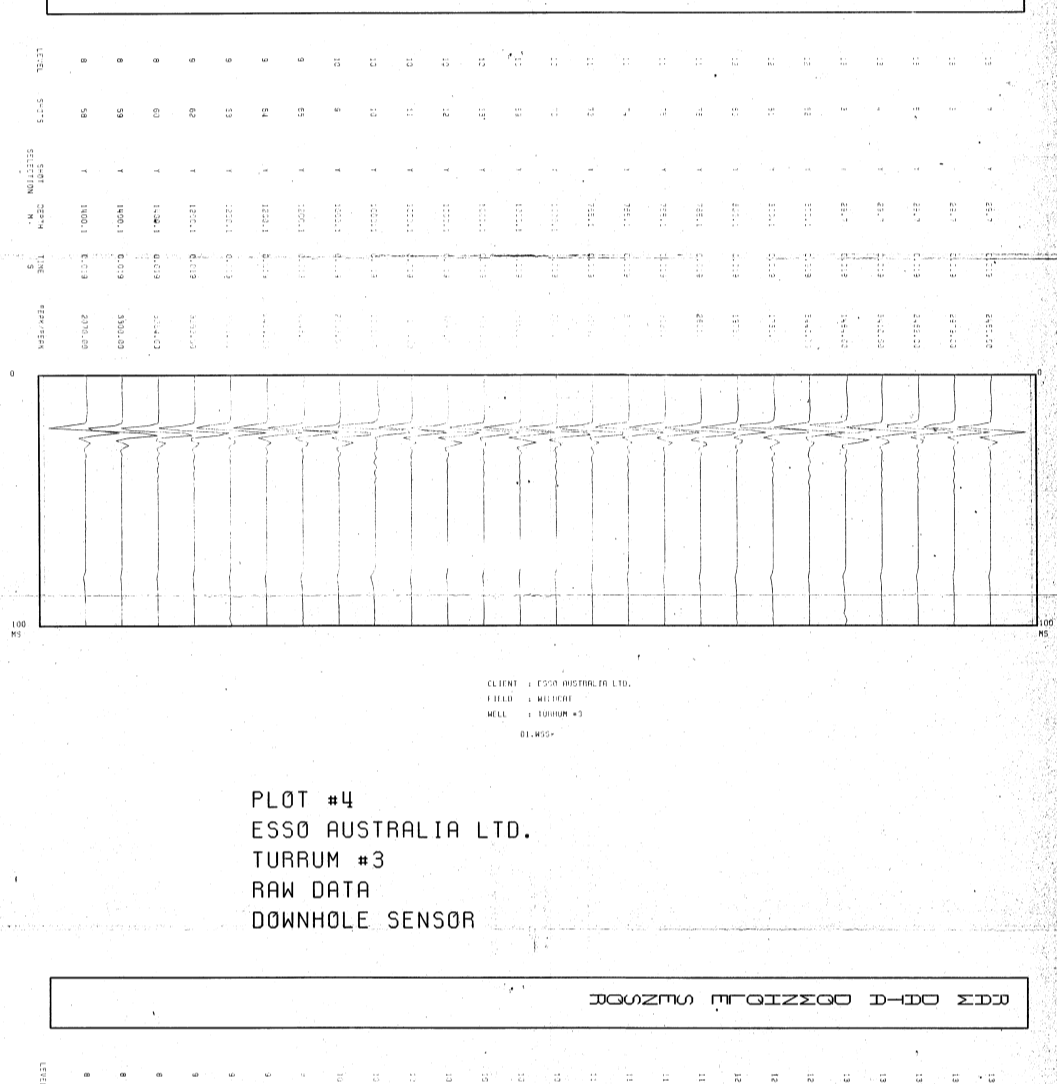
**PLOT #1  
ESSO AUSTRALIA LTD.  
TURRUM #3  
RAW DATA  
SURFACE SENSOR**



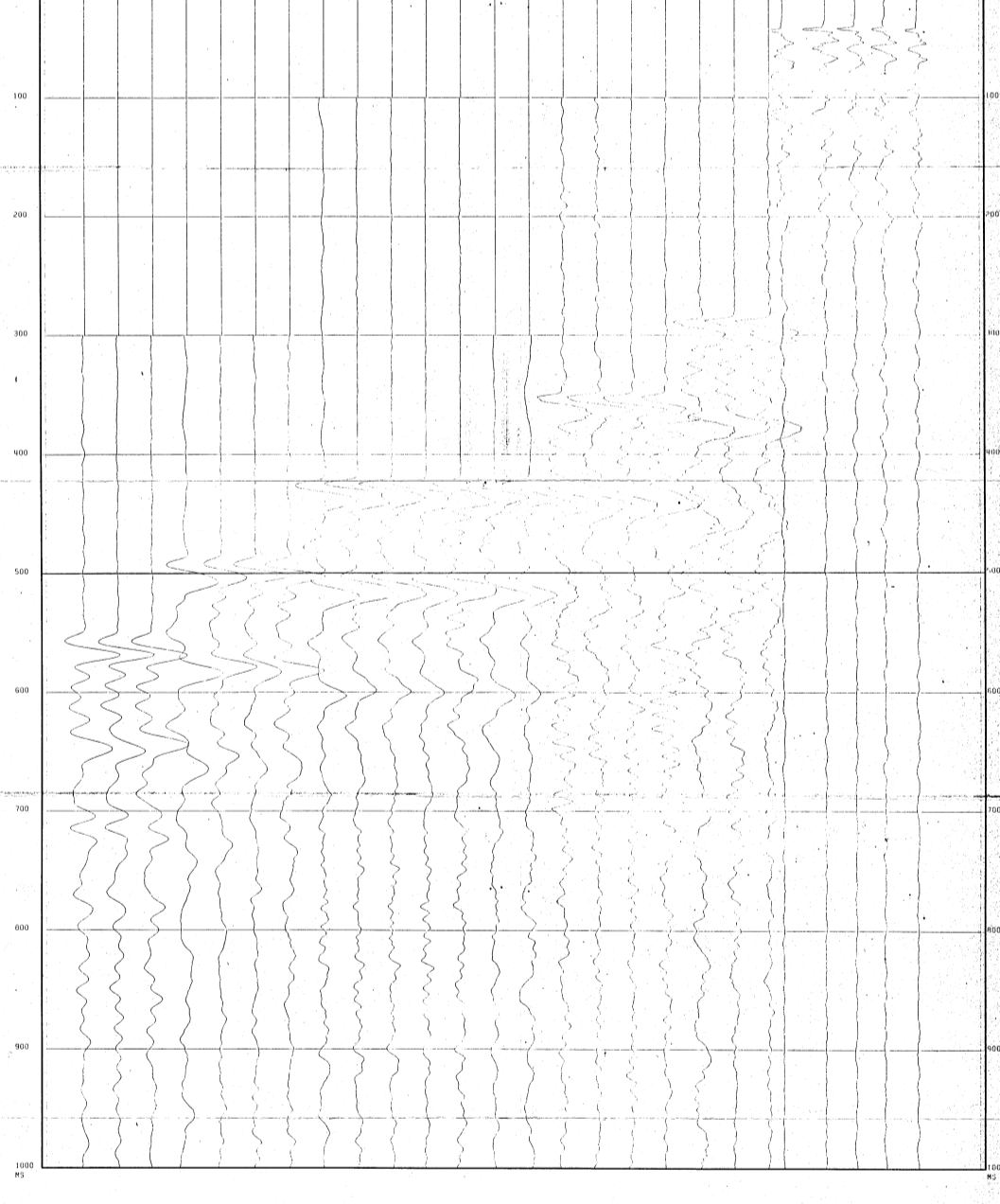
**PLOT #2  
ESSO AUSTRALIA LTD.  
TURRUM #3  
RAW DATA  
DOWNHOLE SENSOR**



**PLOT #3  
ESSO AUSTRALIA LTD.  
TURRUM #3  
RAW DATA  
SURFACE SENSOR**



**PLOT #4  
ESSO AUSTRALIA LTD.  
TURRUM #3  
RAW DATA  
DOWNHOLE SENSOR**



**PLOT #5  
ESSO AUSTRALIA LTD.  
TURRUM #3  
STACKED DATA**

