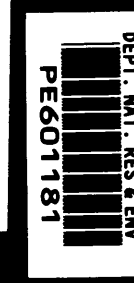


SEISMIC CALIBRATION LOG  
ADJUSTED CONTINUOUS VELOCITY LOG



SCHLUMBERGER

COMPANY ESSO AUSTRALIA LTD.  
WELL TURRUM #3 W.E.R. 66 /  
FIELD WILDCAT  
COUNTRY AUSTRALIA

LOCATION COORDINATES: KM  
LATITUDE 38 15 41.05 S  
LONGITUDE 148 14 58.98 E

ELEVATIONS:  
KB 21.0 M  
DF 20.7 M  
GL -60.0 M

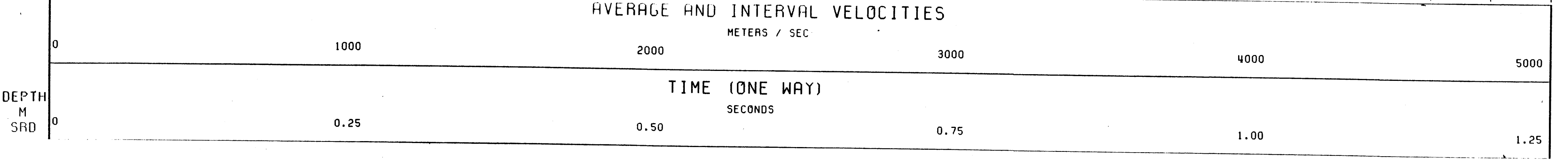
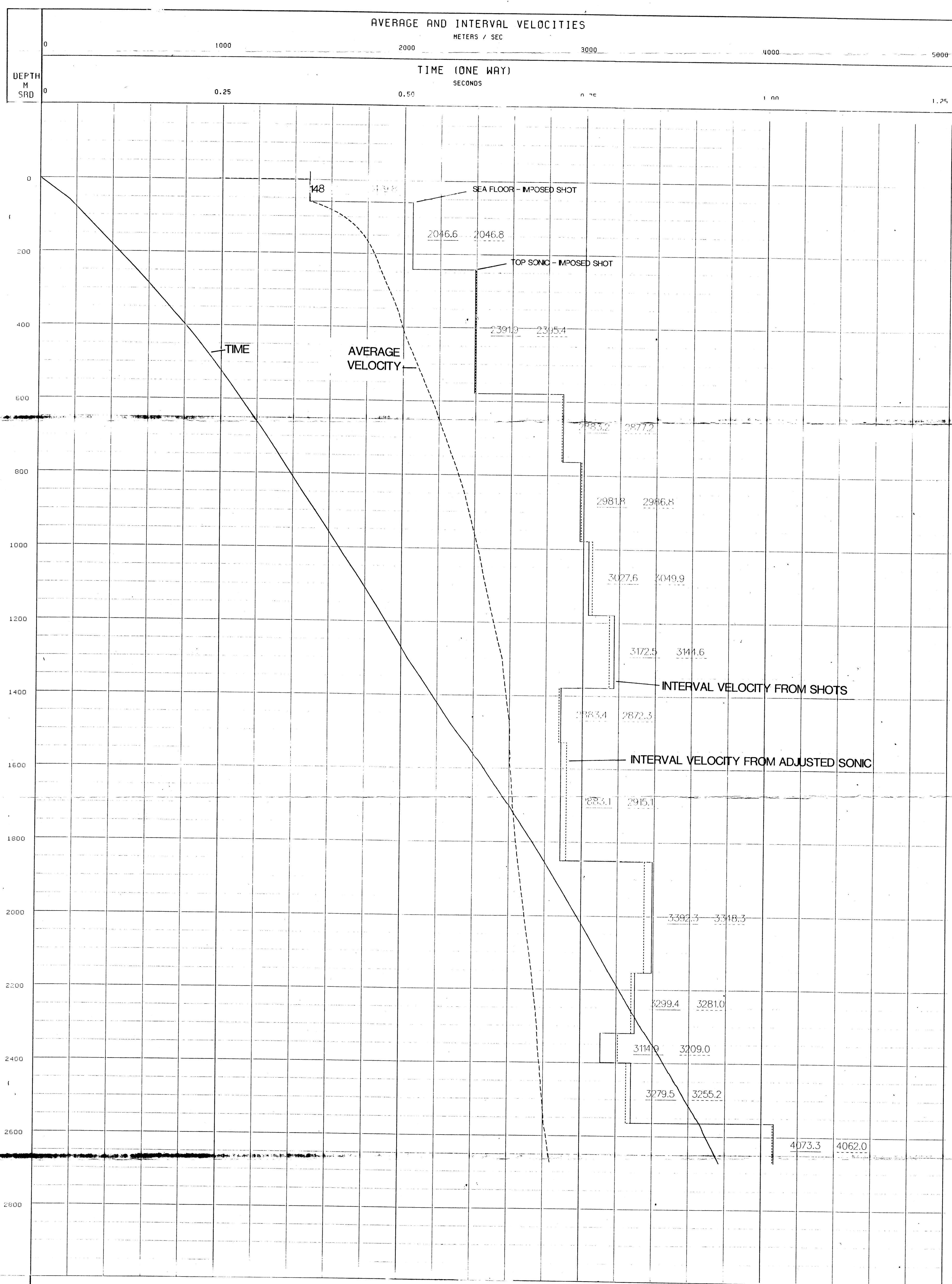
COMPUTER CENTER RSJ  
ANALYST M. SANDERS  
JOB REFERENCE 540268  
DATE 24-APR-85

SEISMIC REFERENCE DATUM NSL

UNITS: METRES  
PERMANENT DATUM: NSL  
LOGS MEASURED FROM: DF  
DRAILING MEASURED FROM: DF  
VELOCITY LOG DEPTHS REFERRED TO: NSL  
DATES OF SONIC RUNS: 11-APR-85, 15-APR-85  
DATES OF CHECK SHOTS RUNS: 15-APR-85  
WELL TOTAL DEPTH: 2898 M  
TOTAL NUMBER OF CHECK SHOTS LEVELS: 12  
WELL DEVIATION: NIL

SONIC RUN DATE LOGGED: 15-APR-85  
GUN ELEVATION: -9M RNSL  
BIT SIZE/DEPTH CRASING SIZE/DEPTH: 12.25"/2998 M 13.375"/808 M  
GUN OFFSET: 37.3 M  
RECEL OFFSET: 37.3 M  
ROT INTERVAL: 2695 M  
TOP INTERVAL: 202.5 M  
SONDE TYPE: NS1-A

REMARKS:  
NOON POOL HYDROPHONE LOCATED 6.25 METRES NE OF WELL AND 9 METRES BELOW NSL



COMPANY ESSO AUSTRALIA LTD.  
FIELD WILDCAT  
WELL TURRUM #3  
COUNTRY AUSTRALIA

