



GEOGRAM*

(Synthetic Seismogram)

Company: **ESSO AUSTRALIA LTD**
 Well: **TORSK #1**
 Field: **WILDCAT**
 Country: **AUSTRALIA**
 Reference No: **569282** Interval: **242200** to **200000**
 Date Logged: **15 NOV 88** Date Processed: **10 DEC 88**
 Location: **038 26' 49.12" S 147 29' 50.04" E**
 Elevations: **KB: 2100 DE: 2070 GL: -4300**
 Permanent Datum: **MSL** Depth Units: **METRES**

LOG INFORMATION

FIELD RECORDING: Engineer: **Y ZHANG** Location: **Program Version: 28.4**
 COMPUTATION: Analyst: **M. SANDERS** Centre: **SYJ** Baseline: **16900X2**
 Logging Datum: **ELEVATION ABOVE MEAN SEA LEVEL 2100**
 Seismic Reference Datum: **000**
 Sonic Calibration By Check Shots: **YES** Some Edited By Analyst: **YES**
 Two-Way Time Sample Interval: **2 ms** Environment: **onshore**

True Vertical Depth Corrections Applied:
 Source of True Vertical Depth Data:
 Maximum Hole Deviation:

Run	Date	Tool Type	Bit Size/ Depth	Casing Size/ Depth	Top Depth	Bottom Depth
1	13 NOV 88	BHC				
VSP	Date	Gun Offset	Hydro Elevation	Hydro Elevation	Gun Azimuth	Hydro Azimuth
Run	15 NOV 88	40 M	40 M	91 M BELOW MSL	122 M BELOW MSL	

GEOGRAM MODEL ASSUMPTIONS
 Equal time slice model of horizontal plane layers.
 Plane acoustic waves at normal incidence.
 No intrinsic attenuation.

POLARITY
 An upgoing wave, reflected by an increase in acoustic impedance with depth, is displayed as a white trough under normal polarity.

SIGNATURES
 All signatures displayed in the Geogram results correspond to a wavelet convolved with a reflection coefficient of -0.5 (A decrease in acoustic impedance with depth).

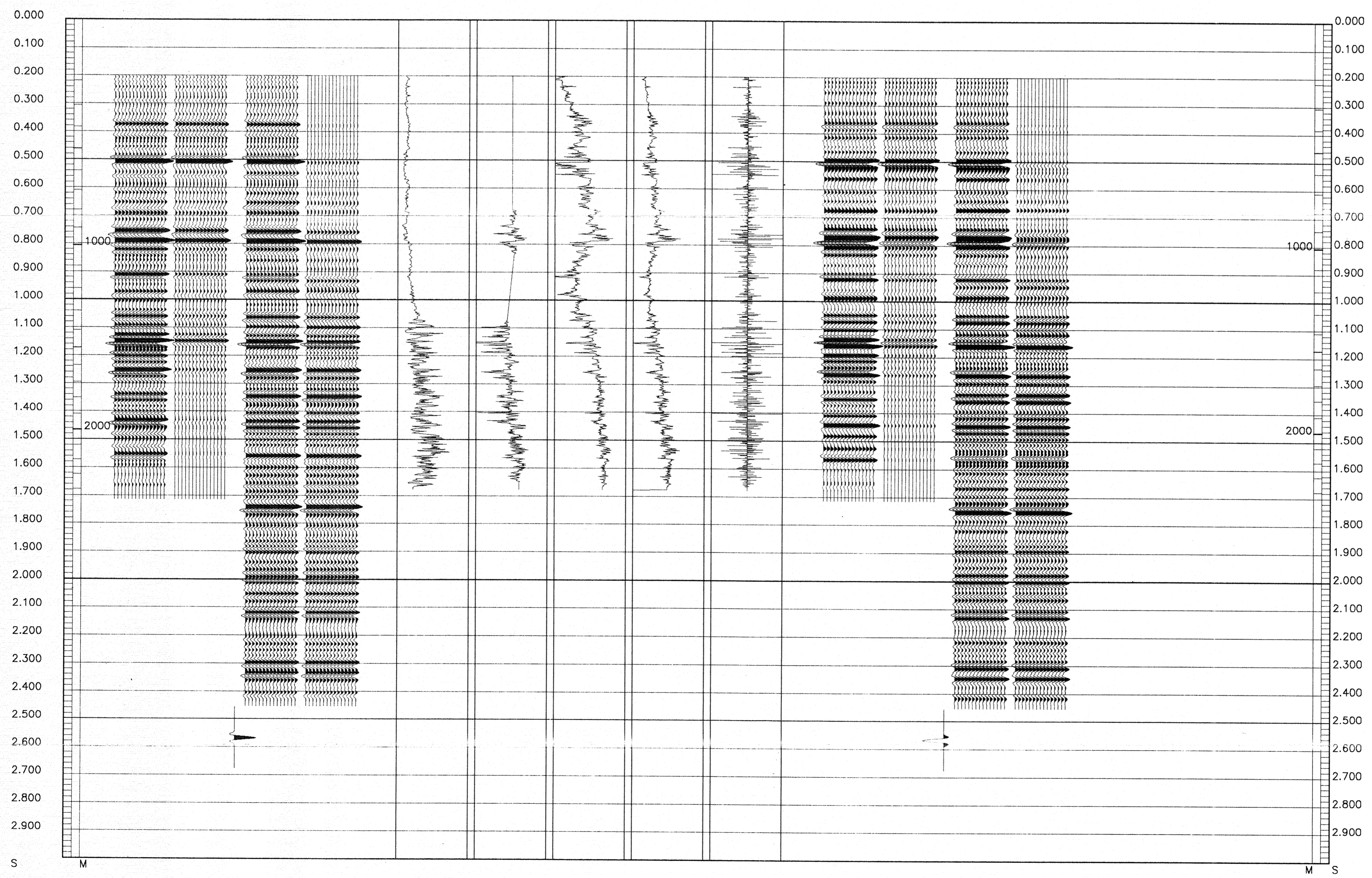
REMARKS
 30 HZ ZERO PHASE

The well name, location and borehole reference data were furnished by the customer.

All interpretations are opinions based on inferences from electrical or other measurements and we cannot, and do not guarantee the accuracy or correctness of any interpretations, and we shall not, except in the case of gross or willful negligence on our part, be liable or responsible for any loss, costs, damages or expenses incurred or sustained by anyone resulting from any interpretations made by any of our officers, agents or employees. These interpretations are also subject to Clause 4 of our General Terms and Conditions as set out in our current Price Schedule.

**** GEOGRAM ****
30 HERTZ ZERO PHASE
RICKER WAVELET
TORSK - 1

MULTIPLES ONLY REVERSE POLARITY
PRIMARIES AND MULTIPLES REVERSE POLARITY
PRIMARIES WITH TRANSMISSION LOSS REVERSE POLARITY
PRIMARIES REVERSE POLARITY
REFLECTION
ACOUSTIC IMPEDANCE
SONIC
DENSITY
GAMMA RAY
MULTIPLES ONLY NORMAL POLARITY
PRIMARIES AND MULTIPLES NORMAL POLARITY
PRIMARIES WITH TRANSMISSION LOSS NORMAL POLARITY
PRIMARIES NORMAL POLARITY



COMPANY **ESSO AUSTRALIA LTD**
 FIELD **WILDCAT**
 WELL **TORSK #1**
 COUNTRY **AUSTRALIA**

