

GEOGRAM

(Synthetic Seismogram)

Company: ESSO AUSTRALIA LTD
 Well: TORSK #1
 Field: WILDCAT
 Country: AUSTRALIA
 Reference No: 569262 Interval: 2422.00 to 2000.00
 Date Logged: 15 NOV 88 Date Processed: 10 DEC 88
 Location: 038 26' 49.12" S 147 29' 50.04" E
 Elevations: KI: 2100 DF: 20.70 GL: -43.00
 Permanent Datum: MSL Depth Units: METRES

LOG INFORMATION
 FIELD RECORDING: Engineer: Y.ZHANG Location: Program Version: 28.4
 COMPUTATION: Analyst: M.SANDERS Centre: SYJ Baseline: 16.60042
 ELEVATION ABOVE MEAN SEA LEVEL
 Logging Datum: 2100
 Seismic Reference Datum: 000
 Sonic Calibration By Check Shots: YES Sonic Edited By Analyst: YES
 Two-Way Time Sample Interval: 2 ms Environment: onshore

True Vertical Depth Corrections Applied
 Source of True Vertical Depth Data:
 Maximum Hole Deviation:

| Run | Date | Tool Type | Bit Size/Depth | Casing Size/Depth | Top Depth | Bottom Depth |
|-----|-----------|-----------|----------------|-------------------|-----------|--------------|
| 1 | 13 NOV 88 | BHC | | | | |

GEOGRAM MODEL ASSUMPTIONS
 Equal time slice model of horizontal plane layers.
 Plane acoustic waves at normal incidence.
 No intrinsic attenuation.

POLARITY
 An ongoing wave, reflected by an increase in acoustic impedance with depth, is displayed as a white trough under normal polarity.

SIGNATURES
 All signatures displayed in the Geogram results correspond to a wavelet convolved with a reflection coefficient of -0.5 (A decrease in acoustic impedance with depth).

REMARKS
 40 HZ ZERO PHASE

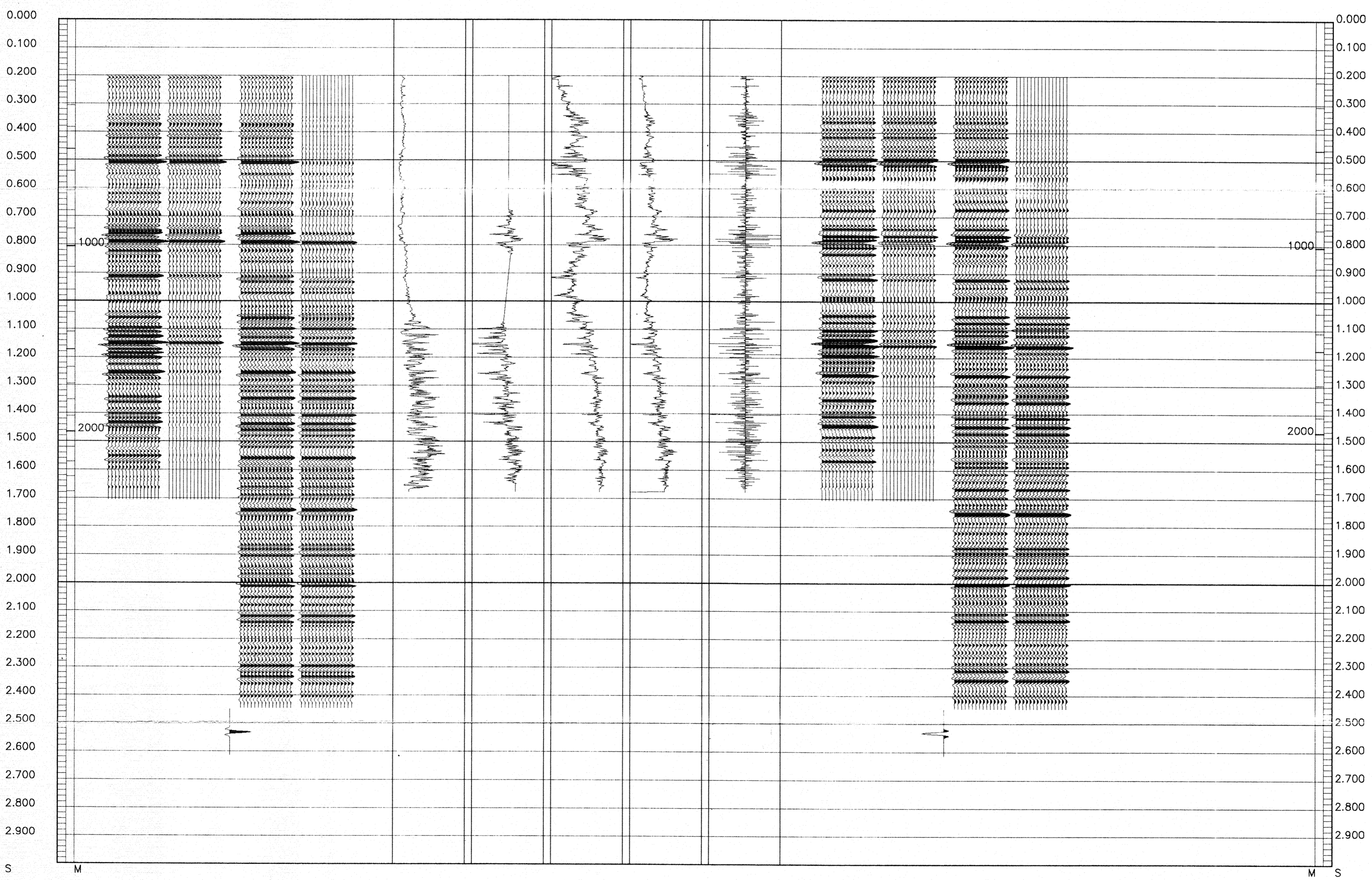
FOLD HERE

The well name, location and borehole reference data were furnished by the customer.

All interpretations are opinions based on inferences from electrical or other measurements and we cannot, and do not guarantee the accuracy or correctness of any interpretations, and we shall not, except in the case of gross or willful negligence on our part, be liable or responsible for any loss, costs, damages or expenses incurred or sustained by anyone resulting from any interpretations made by any of our officers, agents or employees. These interpretations are also subject to Clause 4 of our General Terms and Conditions as set out in our current Price Schedule.

** GEOGRAM **
 40 HERTZ ZERO PHASE
 RICKER WAVELET
 TORSK - 1

| | |
|--|-----------------|
| MULTIPLES ONLY REVERSE POLARITY | 150000.000 FSQC |
| PRIMARIES AND MULTIPLES REVERSE POLARITY | 50000.000 FSQC |
| PRIMARIES WITH TRANSMISSION LOSS REVERSE POLARITY | 10000.000 FSQC |
| PRIMARIES REVERSE POLARITY | 5000.000 US/F |
| REFLECTION | 2000.000 US/F |
| ACOUSTIC IMPEDANCE | 150000.000 US/F |
| SONIC | 25000.000 US/F |
| DENSITY | 1.800 G/C3 |
| GAMMA RAY | 200.000 GAPI |
| MULTIPLES ONLY NORMAL POLARITY | 0.000 GAPI |
| PRIMARIES AND MULTIPLES NORMAL POLARITY | |
| PRIMARIES WITH TRANSMISSION LOSS NORMAL POLARITY | |
| PRIMARIES NORMAL POLARITY | |



COMPANY ESSO AUSTRALIA LTD
 FIELD WILDCAT
 WELL TORSK #1
 COUNTRY AUSTRALIA

