

LINE GSE89A-18
S.P. 101 TO 483

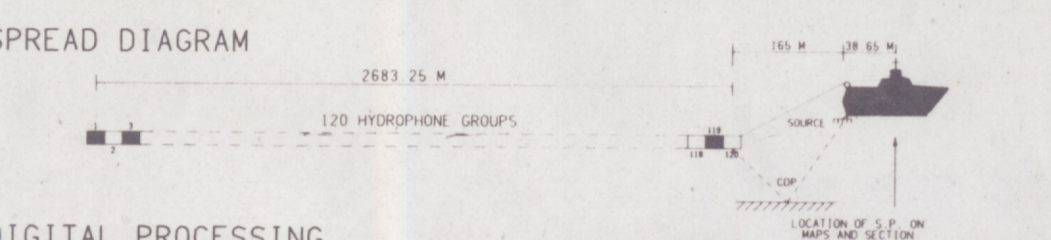


GSE - 89A
VIC/P25 VIC/P25(V)
SOUTHEASTERN OIL & GAS P.L.



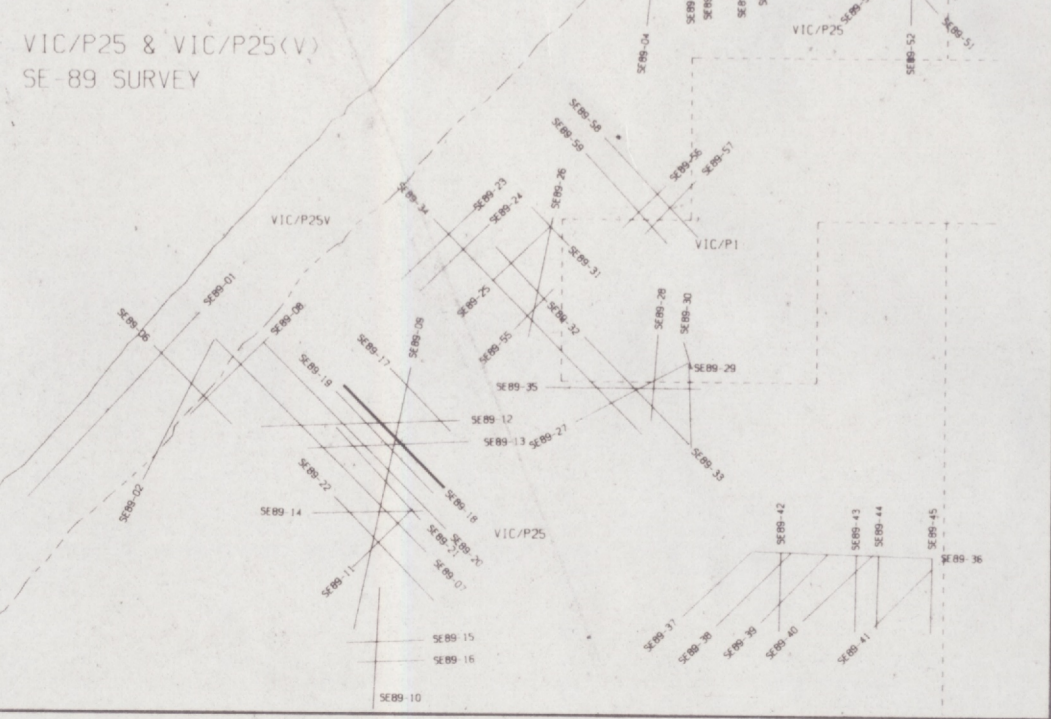
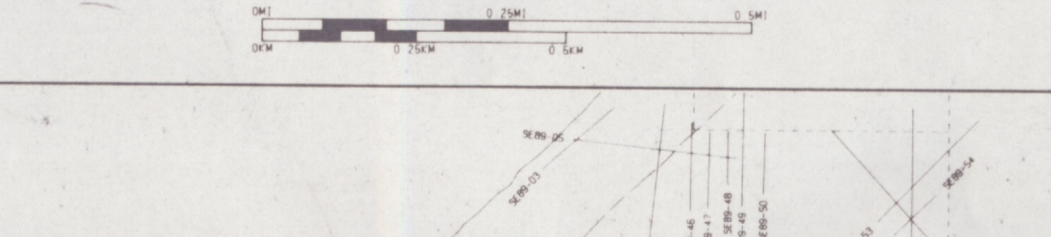
FILTERED FK MIGRATION

FIELD DATA
DATA SHOT BY: WESTERN GEOPHYSICAL PARTY 130 M V WESTERN ORIENT
DATE SHOT: MAY JUNE 1989
RECORDING INSTRUMENTS: DTS V, MODEL NO 97
RECORDING FILLS: HIGH CUT FILTER AND SLOPE 180 HZ # 70 DB OCTAVE
LOW CUT FILTER AND SLOPE 3.8 HZ # 18 DB OCTAVE
RECORDING POLARITY: POSITIVE PRESSURE AT THE MICROPHONE PHASE & NEGATIVE NUMBER ON TAPE
DIGITAL TAPE FORMAT: 2.0 SEC PER GROUP AT 2 MS SAMPLE RATE
RECORD LENGTH/SAMPLE RATE: 4.0 SEC PER GROUP AT 2 MS SAMPLE RATE
ENERGY SOURCE: AQUALIFE
TIME BREAK: 128 MS OVERRIDE
SOURCE DEPTH: 6 METRES AVERAGE
SOURCE TO ANTENNA DISTANCE: 38.65 METRES
SHOTPOINT ANNOTATION: 25 METRES 1 SHOT PER SHOTPOINT
STREAMER LENGTH: 2000.26 METRES
STREAMER DEPTH: 11 METRES AVERAGE
GROUP INTERVAL: 26 METRES TRACES 1 96
HYDROPHONES: 12.5 METRES TRACES 97 120
HYDROPHONES HI RES: 10 PER GROUP
CONVERSION: 60 FOLD 120 TRACE
PRIMARY NAVIGATION SYSTEM: STYDIES
BACKUP NAVIGATION SYSTEM: STYDIES



DIGITAL PROCESSING
POLARITY CONVENTION: THE POLARITY OF THE FIELD RECORDING WAS MAINTAINED THROUGHOUT THE PROCESSING AND DISPLAY
PROCESSING SAMPLE PERIOD: 4.0 SECONDS
DIFFERENTIAL WAVEGUIT SWASH: RECORDED FROM 2MS TO 4 MS
AMPLITUDE RESERVATION: TRACES 97 TO 120 DUMMING 7 TRACES
PRE DECONVOLUTION MUTE: 4.0 SEC PER SECOND FROM 0 TO 3.0 SECONDS
START TIMES(MS): SPECTRAL DIVERGENCE CORRECTIONS APPLIED
VELOCITY FILTERING LEVEL: RAMP LENGTH 45 MS
VELOCITY FILTERING LEVEL: 100 400 2000
CAPED DECONVOLUTION: USING SIPS TO 100 MS WITH IN THE SHOT DOMAIN
VELOCITY ANALYSIS: WITH FULL COSINE RAMPING
VELOCITY ANALYSIS: GPP 74 MS # 2 25 MS OPERATIONS
USING 1/2 DEPTH POINT VELOCITY ANALYSIS
NORMAL WAVEGUIT CORRECTION: USING ANNOTATED VELOCITIES
EQUATION SCALING: USING 2000 M/S GATE
OFFSHORE TRACKS: 285 636 2885
START TIMES(MS): 120 700 2300
RAMP LENGTH: 200 250 250 146 1046 3080
OUTSIDE TRACK MUTE: 5.0 SEC PER SECOND FROM 0 TO 3.0 SECONDS
START TIMES(MS): 100 400 600 800 1200 2000
COMMON DEPTH POINT STACK: 64 FOLD GPP STACK
RUNNING TRACK MIX: 9 1000 MS
WAVE EQUATION MIGRATION IN F X DOMAIN: WITH DIP LIMIT OF 30 DEGREES
MIGRATION VELOCITIES 110 PERCENT
STACKING VELOCITIES ANNOTATED
TIME VARIANT FILTERING: 16 90 1000
TIME VARIANT SCALING: USING 250 MS FILTERING GATES

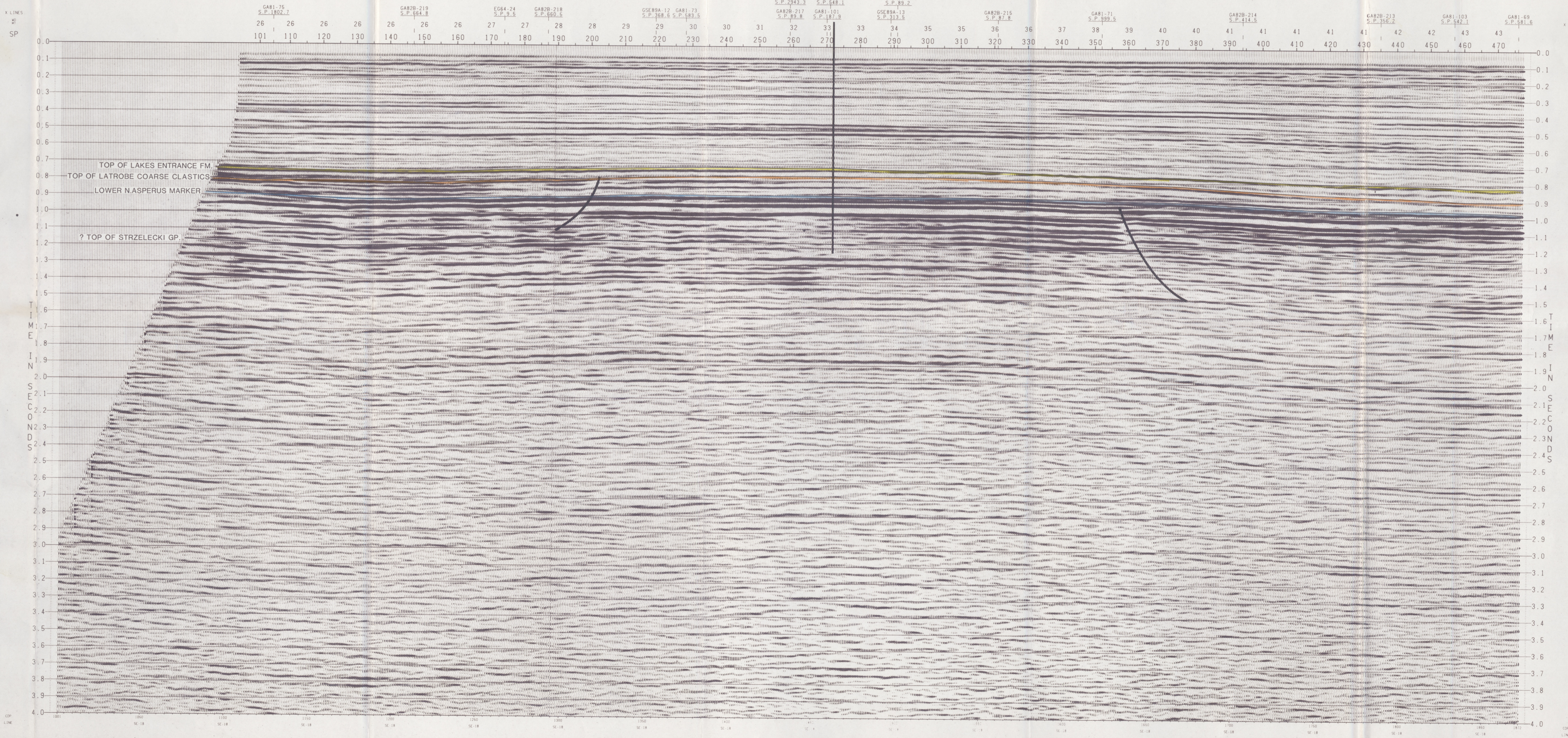
DISPLAY
HORIZONTAL SCALE: 10 000 TRACES 80 000 TRACES
VERTICAL SCALE: 10 000 TRACES 80 000 TRACES
POLARITY: NORMAL
TRACE TYPE: SEAS & PERCENT
DISPLAY UNIT: SEA LEVEL
DISPLAY GAIN: 10 100 1000 10000



37 NOV 1989 21:57:31 PARTY 4558
HALLIBURTON GEOPHYSICAL SERVICE, INC.
A HALLIBURTON COMPANY
PROCESSING CHECKED BY: [Signature]

Table with columns for CDP, TIME, and other parameters for various shot points (GAR1-75, GAR2B-219, EG64-24, etc.)

TOMMYRUFF-1



LINE GSE89A-18 S.P. 101 TO 483

LINE GSE89A-18 S.P. 101 TO 483

LINE GSE89A-18 S.P. 101 TO 483

LINE GSE89A-18 S.P. 101 TO 483

LINE GSE89A-18 S.P. 101 TO 483

LINE GSE89A-18 S.P. 101 TO 483