

PLATE 5: 2468 m Reflected Light

This coal is much richer in inertinite than the coal from 2427.4 m, (Plates 3 and 4) and is therefore termed a clarodurite.

Field Dimensions 0.26 mm x 0.18 mm

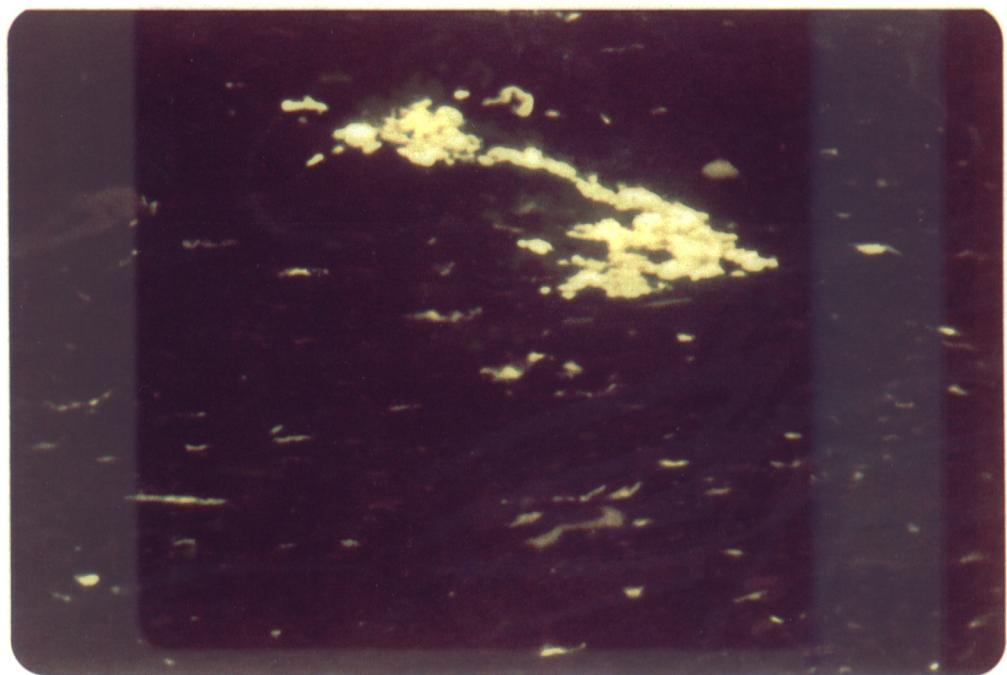


PLATE 6: 2468 m



Fluorescence Mode

The same field as Plate 5 illustrating the intense fluorescence of the fluorinite in the coal as compared to the sporinite (dull orange, upper left).