



PE603756

CL 874 HEAD



GEO-PLOT

CORE LABORATORIES, INC.

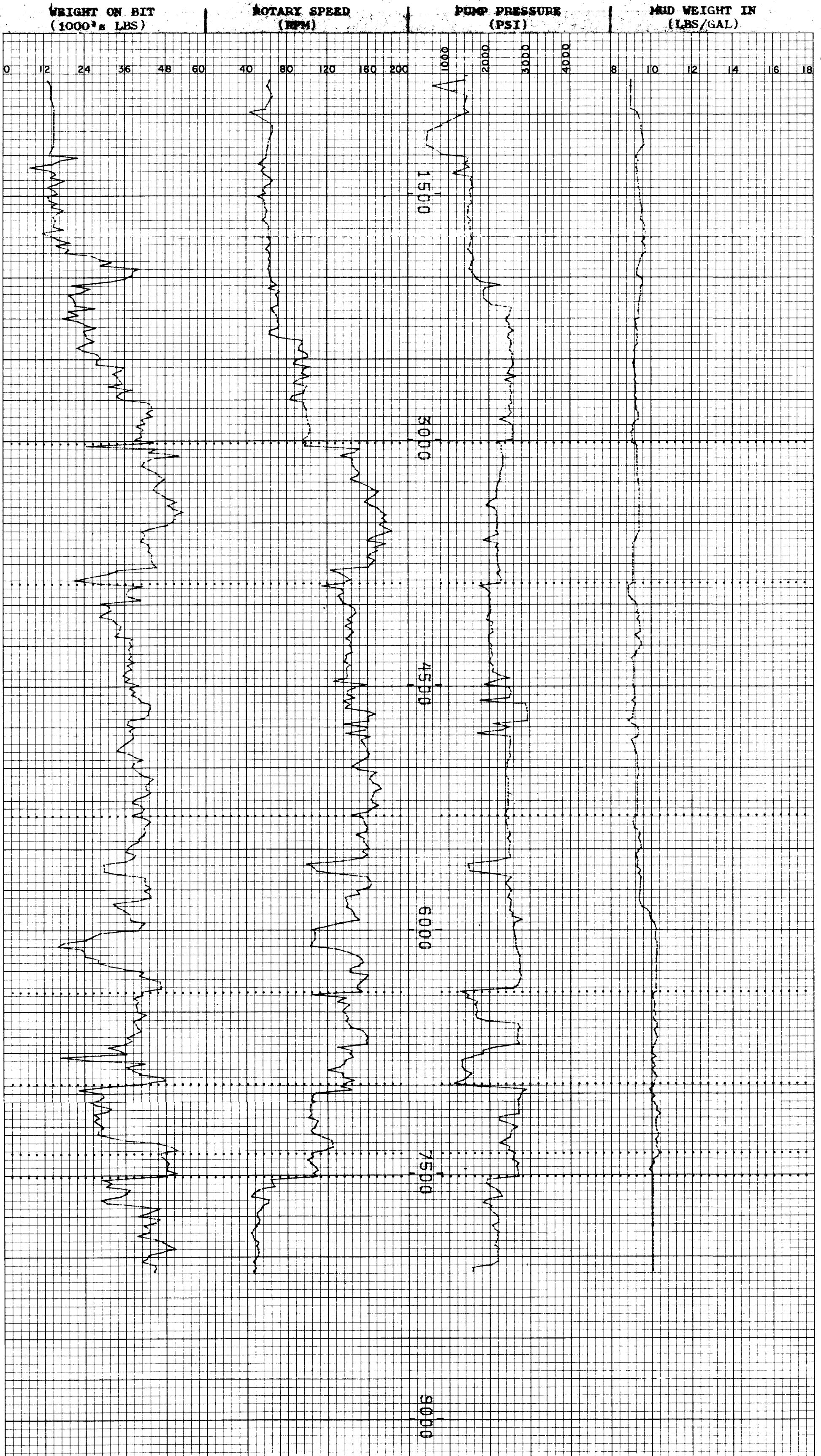
COMPANY RESO AUSTRALIA LTD.
 WELL SNOWFISH # 1
 FIELD GIPPSLAND BASIN
 COUNTY AUSTRALIA STATE VICTORIA
 LOCATION LAT: 38° 23' 36.086"E ELEVATION KB-MSL 84'
LONG: 148° 00' 23.531"E

DEPTH LOGGED FROM 768' TO 8100'
 DATE LOGGED 26th DECEMBER 1976 TO 14th JANUARY 1977
 CREW CHIEF S. LA ROSA FILE NO. ESP 1010
 DRG. FLUID SEAWATER/GEL 768' TO 3800'
LOW SOLIDS/FRESHWATER 3800' TO 8100'

These analyses, opinions or interpretations are based on observations and material supplied by the client to whom, and for whose exclusive and confidential use, this report is made. The interpretations or opinions expressed represent the best judgment of Core Laboratories, Inc. (all errors and omissions excepted). Core Laboratories, Inc. and its officers and employees, assume no responsibility and make no warranty or representations as to the productivity, proper operation, or profitability of any oil, gas or other mineral well or sand in connection with which such report is used or relied upon.

EXTENDED SERVICE LOGGING

VERTICAL SCALE
1:6000



W 586 986 1000